

# 2010-11 COLORADO MEN'S BASKETBALL

## GAME #16

vs. 9/8 Missouri Tigers  
(14-1, 0-0 Big 12)

Saturday, Jan. 8, 11:47 a.m. (MST)  
Coors Events Center (11,064)



**Television:** Big 12 Network (Altitude 2)

**Announcers:** Dave Armstrong (p-b-p), Jon Sundvold (analyst)

**KKZN 760-AM:** Mark Johnson (p-b-p),  
Chris Lewis (analyst)  
Sirius Radio: 127; XM 231

**CUBuffs.com**

## 2010-11 COLORADO SCHEDULE (11-4, 0-0 Big 12)

Date	Opponent (TV)	Time
Fri. Nov. 12	#IDAHO STATE (FSN RM)	W, 88-80
Tue. Nov. 16	at Georgia (FSN RM)	L, 74-83
Sat. Nov. 20	at San Francisco	L, 81-83 (ot)
Tue. Nov. 23	ALCORN STATE (FSN RM)	W, 91-51
Sun. Nov. 28	at Harvard	L, 66-82
Tue. Nov. 30	TEXAS-PAN AMERICAN (FSN RM)	W, 83-64
Sat. Dec. 4	^OREGON STATE (ESPNU)	W, 83-57
Wed. Dec. 8	#COLORADO STATE (FSN RM)	W, 90-83 (ot)
Fri. Dec. 17	THE CITADEL (FSN RM)	W, 89-61
Sun. Dec. 19	LONGWOOD (FSN RM)	W, 104-59
Wed. Dec. 22	%vs. New Mexico	L, 76-89
Thr. Dec. 23	%vs. Indiana	W, 78-69
Wed. Dec. 29	MD EASTERN SHORE (FSN RM)	W, 92-65
Sun. Jan. 2	at Cal State Bakersfield	W, 85-73
Wed. Jan. 5	WESTERN NEW MEXICO (BUFFS TV)	W, 92-70
Sat. Jan. 8	!* 9/8 MISSOURI (Big 12 Network)	11:30 a.m.
Wed. Jan. 12	*at 17/17 Kansas State (ESPNU)	7 p.m.
Sat. Jan. 15	!*OKLAHOMA STATE (Big 12 Network)	11:30 a.m.
Tue. Jan. 18	*at Nebraska (ESPN2)	5 p.m.
Sat. Jan. 22	!*at Oklahoma (Big 12 Network)	11:30 a.m.
Tue. Jan. 25	!*KANSAS (Big 12 Network)	6 p.m.
Sat. Jan. 29	!*at Baylor (Big 12 Network)	11:30 a.m.
Tue. Feb. 1	*IOWA STATE (FSN RM)	7 p.m.
Sat. Feb. 5	!*at Missouri	5:30 p.m.
Wed. Feb. 9	*TEXAS A&M (ESPNU)	7 p.m.
Sat. Feb. 12	*KANSAS STATE (ESPNU)	7 p.m.
Sat. Feb. 19	*at Kansas (ESPN)	Noon
Wed. Feb. 23	!*at Texas Tech	5:30 p.m.
Sat. Feb. 26	!*TEXAS (Big 12 Network)	2 p.m.
Wed. Mar. 2	!*at Iowa State	5:30 p.m.
Sat. Mar. 5	*NEBRASKA	7 p.m.
Mar. 9-12	**Big 12 Basketball Championships	TBD

%-10th Annual Las Vegas Classic (CBS College Sports Network)  
^-Big 12/Pac-10 Harwood Series \*-Big 12 Conference  
!-ESPN Full Court  
\*\*-Big 12 Championships (Sprint Center, Kansas City, Mo.)  
#-Doubleheader with CU women's team  
Home Games in CAPS (FSN RM) FSN Rocky Mountain  
DATES AND TIMES ARE SUBJECT TO CHANGE

Men's Basketball Contact: Andrew Green  
Office: (303) 492.3812  
Cell: (720) 470.9780  
E-Mail: andrew.green@colorado.edu

## COLORADO PROBABLE STARTERS

Pos/No	Player	Ht	Wt	Yr	Hometown	PPG	RPG	APG
G 1	Nate Tomlinson	6-3	190	Jr.	Sydney, Australia	3.6	2.1	2.9
G 5	Marcus Relphorde	6-7	220	Sr.	Chicago, Ill.	12.1	4.2	2.4
G 10	Alec Burks	6-6	195	So.	Grandview, Mo.	19.1	4.7	2.3
G 11	Cory Higgins	6-5	180	Sr.	Danville, Calif.	16.6	3.3	2.7
F 33	Austin Dufault	6-9	225	Jr.	Killdeer, N.D.	9.0	5.0	^1.1

## OFF THE BENCH

G 2	Shannon Sharpe	6-1	200	R-Fr.	Corona, Calif.	2.6	1.3	1.7
G 21	André Roberson	6-7	195	Fr.	San Antonio, Texas	6.7	7.7	^1.7
G 24	Levi Knutson	6-4	200	Sr.	Littleton, Colo.	11.4	3.1	1.1

^^-steals

## MISSOURI TIGERS PROBABLE STARTERS

Pos/No	Player	Ht	Wt	Yr	Hometown	PPG	RPG	APG
G 3	Matt Pressey	6-2	185	Jr.	Dallas, Texas	7.7	1.9	1.8
G 12	Marcus Denmon	6-3	185	Jr.	Kansas City, Mo.	17.2	4.0	2.0
G 24	Kim English	6-6	200	Jr.	Baltimore, Md.	11.0	3.1	2.6
F 10	Ricardo Ratcliffe	6-8	240	Jr.	Hampton, Va.	11.4	6.9	*1.3
F 21	Laurence Bowers	6-8	210	Jr.	Memphis, Tenn.	12.0	6.1	1.8

\*-blocks

**QUICKLY:** Colorado has lost 13-straight Big 12 Conference openers since 1997-98. They won their first Big 12 opener in 1996-97 defeating Nebraska at home (79-73). Since then the Buffs are 1-6 at home to start the conference slate • CU ended the non-conference schedule unbeaten at 9-0 and 21-straight home wins since the 2008-09 season, including 12 in a row at home dating back to last season • The Buffs broke an eight-game losing streak in non-conference road games outside the state of Colorado (Nov. 21, 2006 at Utah, 60-59) with its 85-73 win at CSU Bakersfield.

**WOODEN TOP 30 LIST:** Alec Burks was one of 30 student-athletes named to The John R. Wooden Award Midseason list announced Thursday by The Los Angeles Athletic Club. Burks leads the Buffs in scoring with 19.1 points per game and has led the team in scoring nine times in 2010-11. The Grandview, Mo. native has recorded eight, 20-point game efforts this season and is shooting 49.7 from the field, 83 percent from the free throw line. The Big 12 Conference boasts six players. Burks, Marcus Denmon (Missouri), Lace-Darius Dunn (Baylor), Jordan Hamilton (Texas), Marcus Morris (Kansas), and Jacob Pullen (Kansas State).

**vs. MIZZOU:** Colorado begins its second season Saturday morning (11:47 tip) opening their final Big 12 Conference season against the Missouri Tigers. The Tigers hold a 95-54 advantage against the Buffs in the series that dates back to 1936. However, Mizzou holds a slim 33-30 edge over CU in Boulder. The Tigers have won the last nine straight since 2007. In Big 12 play Missouri holds a 7-6 edge in conference games in Boulder, including the last four in a row dating back to 2007.

**BIG 12 OPENERS:** Colorado has dropped 13-straight Big 12 openers. CU's lone conference opening win came in the first season of the Big 12 (Jan. 4, 1997, Nebraska, 79-73 in Boulder). Saturday's Big 12 opener is only the second match up with Mizzou to open conference play.

## 2010-11 Team Averages

	CU	MIZZ
Points	84.3	86.4
Pts. Allowed	71.3	67.3
Scoring Margin	+13.5	+19.1
Field Goals	29.7	31.6
Field Goal Att.	59.5	65.3
Field Goal Pct.	.499	.484
3-pt FGs	5.6	7.9
3-pt FG Att.	15.5	20.1
3-pt FG Pct.	.362	.392
FTM	19.7	15.3
FT Att.	25.4	21.3
FT Pct.	.777	.721
Off. Rebs.	11.8	13.2
Def. Rebs.	24.1	24.7
Total Rebs.	35.9	37.9
Reb. Margin	+3.7	+2.0
Fouls	18.8	19.6
Turnovers	10.9	13.6
Assists	14.8	18.7
Blocks	3.2	5.5
Steals	8.2	10.3

Back in 2007-08, Mizzou clobbered CU and second-year head coach Jeff Bzdelik in Columbia, 107-62. The 107 points are the most a CU team has giving up since then.

**NATIONAL RANKINGS (Jan. 2):** In the latest NCAA national rankings CU as a team ranks in the nation's top-10 in four categories: 7th in scoring offense, 84.3 ppg.; 8th FG%, 50.2; 9th FT% 77.9; and 10th in turnovers per game 10.9. Individually, Cory Higgins is the highest CU player ranking 23rd in FT% (89.6), while Alec Burks is 44th in points per game (19.0). Complete list refer to the last page of the notes.

**TRENDS:** CU has won 10 of 11 games when at least four players score 10 or more points • Five players are averaging 10 or more points a game in the team's 11 wins • CU has forced more turnovers than committed in 14 of 15 games and committed single-digit turnovers in seven of 15 games • The Buffs are 10-1 when scoring 80+ points.

**MORE TRENDS:** CU is 9-0 with a higher shooting percentage; 7-0 when their bench outscores the opponent; and 8-0 when out-rebounding the opponent • CU is 10-1 when leading at the half; 6-0 when shooting 50 percent or higher; and 10 of 11 wins have occurred when taking care of the ball (having fewer turnovers).

**LAST 10 GAMES:** CU is shooting 52.8 percent from the field in its last 10 games, posting a 9-1 record. The Buffaloes have connected at 50 percent or better six times during that span and allowed the opposition to shoot under 42 percent eight times. Four players are averaging 13 or more points.

**INDIVIDUAL NOTES:** Alec Burks and Cory Higgins have led CU one-and- two in scoring 27 of their 45 games together, including eight

times this season • Austin Dufault and Marcus Relphorde are the only players to start every game (15) • Alec Burks and Cory Higgins have netted scoring double-digits in 14 of 15 games; Marcus Relphorde 12 of 15 games, and Levi Knutson 11 of 15.

**WINS/LOSSES:** In 11 victories, the Buffs are averaging 88.6 points per game (opponent 66.5 ppg.); shooting 52.5 percent from the floor (oppt: 41.3), and outrebounding the opponent by 7.5 a game. Five players are averaging 10 or more points with a team average of 17.4 assists per contest. In four losses, CU averages 74.2 points a game; shoots 42.5 percent from the floor, average only eight assists, and have two players in double digits.

**DOUBLE-DOUBLES:** Andre Roberson has recorded three double-doubles (the only one on CU

**TOP RETURNING SCORING GUARD TANDEM NATIONAL (as of Jan. 6)**

Rk	Players (PPG) School	Combined PPG
1.	Anatoly Bose (23.3), Fred Hunter (16.0), Nicholls State	39.3
2.	Adrian Oliver (24.4), Justin Graham (15.0), San Jose State	39.4
3.	Vincent Council (15.3), Marshon Brooks (23.4), Providence	38.7
4.	Tu Holloway (21.3), Mark Lyons (12.6), Xavier	33.9
5.	<b>Alec Burks (19.1), Cory Higgins (16.6), Colorado</b>	<b>35.7</b>
6.	C. J. McCollum (20.5), Michael Ojo (14.0), Lehigh	34.5
7.	Tristan Thompson (17.3), Josh White (14.6), North Texas	31.9
8.	Logan Aronhalt (15.8), Tim Ambrose (17.6), Albany	33.4
9.	Austin Freeman (18.3), Jason Clark (13.3), Georgetown	31.6
10.	Norris Cole (20.9), Trevon Harmon (13.8), Cleveland State	34.7
Bonus Coverage:		
3.	Adnan Hodzic (20.4), Josh Slater (17.1), Lipscomb - Hodzic is a 6-8 forward	37.5
5.	Kyle Singler (17.5), Nolan Smith (18.6), Duke - Singler is a 6-8 forward	36.1
8.	Denzel Bowles (17.2), Julius Wells (10.3), James Madison - Denzel Bowles is a 6-10 forward	27.5

this season). His latest was 12 points, 12 rebounds against Western New Mexico (others The Citadel, Longwood). He has led the team in rebounding three-straight games, and seven of his last eight.

Earlier in the season, Roberson became the first CU freshman to record back-to-back double-doubles since Richard Fox accomplished the feat during 1999-2000 season. Roberson also became the first CU player overall to accomplish the double-double feat in back-to-back games since Richard Roby (2007-08).

**FROSH BOARDS/BLOCKS/STEALS:** Andre Roberson leads the Buffaloes in rebounding (112) with 7.7 a game average, in addition to 24 steals and 20 blocked shots. The 20 are more than CU recorded of all last year. In 2008-09, the team high was 20 (Jermyl Jackson-Wilson). Roberson also leads on the offensive (35) and defensive glass (80).

**FIRST 15 GAMES:**

First-year head coach Tad Boyle is 11-4 after his first 15 games at CU. He ranks second all-time among first-year head coaches in their respective first year at the helm. Ricardo Patton went 12-3, Sox Walseth 10-5; Jeff Bzdelik 8-7.

**TODAY'S POSTER:** Is junior forward Austin Dufault. The Killdeer, N.D. native will play his 78th career game

**LAST TIME VERSUS THE NATION'S TOP-10:** With the Buffs taking on nationally ranked Missouri on Saturday, here's a look a CU's record against the nation's elite in terms of opponents being ranked. Here are CU's upset wins over the top-10.

- #2 vs. Oklahoma State, 57-53, Feb.12, 1992
- #3 vs. Texas, 93-80, Feb. 4, 2003  
#3 vs. Kansas, 72-68, Jan. 20, 1953  
#3 vs. Kansas State, 65-57, Feb. 23, 1952
- #4 at Arizona State, 93-70, Dec. 16, 1963  
#4 vs. Iowa, 60-57, Dec. 12, 1955  
#4 vs. Washington, 81-60, Dec. 30, 1953
- #5 at Missouri, 81-79 (ot), Jan. 15, 1973  
#5 vs. New Mexico, 79-72, Dec. 16, 1968  
#5 vs. Iowa, 75-54, Mar. 21, 1955
- #6 vs. Kansas, 60-59, Jan. 22, 2003  
#6 vs. Missouri, 92-88, Mar. 9, 1990
- #7 vs. Kansas, Jan. 17, 1967, 62-59  
#7 vs. Kansas State, 81-80, Feb. 13, 1961
- #8 vs. Iowa State, 70-45, Jan. 18, 1997  
#8 vs. Kansas, 79-71, Feb. 20, 1991
- #9 vs. Iowa State, 59-52, Feb. 11, 1957

**Colorado defeated a top-5 ranked opponent at home:** #2 Oklahoma State, 57-53, Feb. 12, 1992  
**Colorado defeated a ranked opponent on the road (recent):** #20, at Texas Tech, Jan. 11, 1997  
**Colorado faced a No. 1 ranked team:** 14 times, latest Feb. 20, 2010, 94-74 at Kansas.

**QUICK BUFF HITS**

• **Nate Tomlinson:** in CU's 10 of 11 wins at the point has 34 assists, 17 turnovers • 12 starts at point (38 assts/17 TOs).

• **Shannon Sharpe:** last eight games at the point in reserve role: 14 assists, 8 turnovers • Seven blocks (t-2nd on team).

• **Marcus Relphorde:** last five games: third in scoring 13.2 ppg., 52.2 percent from the field • Ranks third on team in assists (36).

• **Alec Burks:** 798 career points (46th all-time); eight 20-point game (16 career) • Led CU in scoring nine times (21 career) • Wooden Award, Naismith Trophy, Cousy Award Watch Lists - only a sophomore.

• **Cory Higgins:** In 11 wins has 38 assists and 10 turnovers, in four losses (2 assists, 13 turnovers) • Wooden Award Watch List • Second on team in points (16.6), assists (40), steals (20), three-pointers made (15).

• **Andre Roberson:** 21 rebounds from 10th place on freshman top 10 rebounding list • Leads team in steals (26) and blocks (19).

• **Levi Knutson:** Shooting a career-best 58.3 FG%; 60 FGs this season, also a career-high; Leads team with 26 3-pointers.

• **Austin Dufault:** Shooting a career-best 55.6 FG%; Second on team on the glass (5.0 rpg.) • Eight games w/ five or more rebounds; Seven games 10+ points.

**CU Basketball Roster**

No.	Student-Athlete	Pos.	Ht.	Wt.	Cl.	Exp	Hometown (High School/Previous College)
1	Nate Tomlinson	PG	6-3	190	Jr.	2L	Sydney, Australia (Lee Academy [Maine])
2	Shannon Sharpe	PG	6-1	200	Fr.	RS	Corona, Calif. (Centennial)
5	Marcus Relphorde	G	6-7	220	Sr.	1L	Chicago, Ill. (Homewood-Flossmoor/ American Christian School [Alston, Pa.]/St. Louis
10	Alec Burks	G	6-6	195	So.	1L	Grandview, Mo. (Grandview)
11	Cory Higgins	G	6-5	180	Sr.	3L	Danville, Calif. (Monte Vista/ The Pendleton School [Bradenton, Fla.])
14	Javon Coney	G	6-3	210	Sr.	3L	Chicago, Ill. (Latin HS)
15	*Shane Harris-Tunks	C/F	6-11	250	So.	1L	Liverpool, New South Wales, Australia (Australian Institute of Sport)
21	André Roberson	G	6-7	195	Fr.	HS	San Antonio, Texas (Wagner)
24	Levi Knutson	G	6-4	200	Sr.	3L	Littleton, Colo. (Arapahoe)
32	Ben Mills	C	7-0	215	Fr.	HS	Hartland, Wis. (Arrowhead)
33	Austin Dufault	F	6-9	225	Jr.	2L	Killdeer, N.D. (Killdeer)
55	Trey Eckloff	F	6-10	235	Jr.	2L	Englewood, Colo. (Cherry Creek)

**Head Coach:** Tad Boyle (Kansas '85)

**Assistant Coaches:** Jean Prioleau (Fordham '92); Mike Rohn (McPherson College '90); Tom Abatemarco (Dowling College '73)

**Director of Basketball Operations:** Rodney Billups (Denver 2005)

\*-Harris-Tunks tore his left ACL in October 28 practice and will not play this year. He has three years remaining.

**PRONUNCIATIONS**

Dufault: DO - fault

Knutson: Kuh - Nute - sun

Relphorde: REL - ferd

Roberson: ROB - ber - son

this afternoon with 73 starts. He is averaging a career-best nine points and five rebounds per game, and is one of two players on the team to start every game. In addition to points and rebounds, Dufault is shooting a career-best 55.6 percent from the field and has reached the 500-point plateau in his three year career with 561 (76th on the CU scoring list). Dufault is a psychology major.

**CHARITY STRIPE:** Alec Burks and Cory Higgins are a combined 160-for-187 (85.6 percent) from the free throw line this season. The rest of the team is 136-for-194 (70.1). Three players are shooting over 80 percent: Higgins (72-for-81, 88.9); Burks (88-for-106, 83.0) and Levi Knutson at 89.3 percent (25-for-28). In the Big 12, the Buffs are the top shooting team through the non-conference at 77.8 percent.

**MOVING UP THE CHARTS:** With 1,640 career points (only seven CU players have ever scored that many), Cory Higgins is seventh all-time on the school's all-time scoring list. Up next is Emmett Lewis (1,680 pts.) for sixth place. Scoring isn't the only list Higgins appears on:

- 2nd in free throws made (468)
- 2nd in career starts (108)
- 3rd in career minutes (3,712)
- 4th in guard rebounding (472)
- 5th in free throw attempts (571); 5th in FT% (82.0)
- 6th in steals (175)
- 8th in FGs Made (534)
- 9th in FG attempts (1,123)
- 13th in assists (266); 21st in games played (109)

**100 FROSH BOARDS:** After playing 14 games, Andre Roberson tied the school mark for fastest freshman to the 100-rebound plateau. Grabbing 10 at Cal State Bakersfield, Roberson tied Richard Fox with 14 games to reach 100 rebounds.

**Andre Roberson (2010-pre.)**

Richard Fox (1999-2000)

David Harrison (2001-02)

Larry Vaculik (1974-75)

Stephane Pelle (1999-2000)

Matt Bullard (1985-86)

**14 games (115 currently)**

14 games (191 for season)

15 games (188 for season)

15 games (158)

16 games (218 - school rec.)

16 games (179)

**Big 12 Bests (Colorado vs. Missouri)****Colorado**

Points: 33, Richard Roby, Jan. 14, 2006, Columbia  
Rebounds: 22, Jamahl Mosley, Jan. 10, 2001, Boulder  
Assists: 10, Michel Morandais, Feb. 22, 2003, Boulder  
Steals: 5, three times, recent Cory Higgins, Feb. 6, 2010, Boulder  
Blocks: 4, twice, recent, Marcus King-Stockton, Feb. 23, 2008, Columbia  
3-Pointers: 6, twice, recent, Richard Roby, Jan. 14, 2006, Columbia  
FTM: 15, Chauncey Billups, Jan. 7, 1997, Columbia  
FTA: 20, Chauncey Billups, Jan. 7, 1997, Columbia  
O-Reb: 9, Stephane Pelle, Jan. 19, 2002, Columbia  
D-Reb: 14, Jamahl Mosley, Jan. 10, 2001, Columbia

**Missouri**

Points: 29, Kareem Rush, Jan. 19, 2002, Columbia  
Rebounds: 19, Arthur Johnson, Jan. 10, 2001, Boulder  
Assists: 9, J.T. Tiller, Feb. 24, 2010, Columbia  
Steals: 7, Rickey Paulding, Feb. 10, 2004, Columbia  
Blocks: 4, three times, recent Keith Ramsey, Feb. 6, 2010, Boulder  
3-Pters: 5, four times, recent, Matt Lawrence, Feb. 28, 2007, Columbia  
FTM: 14, Wesley Stokes, Feb. 14, 2001, Boulder  
FTA: 16, Wesley Stokes, Feb. 14, 2001, Boulder  
O-Reb: 7, twice, recent, Arthur Johnson, Feb. 22, 2003, Boulder  
D-Reb: 12, twice, recent, Arthur Johnson, Jan. 10, 2001, Columbia

**MORE ROBERSON:** Coming into today, he ranked 11th nationally and 3rd in the Big 12 among freshmen in rebounds per game (now at 7.7 per game). Additionally, he is first nationally in rebounds per game among freshmen who have come off the bench in over half of their teams' games (Roberson has zero starts in 15 games played).

**SHARING THE BALL:** For the first time since the 1996-97 season (and four other times before that), CU had two players with at least six or more assists in the same game in back-to-back contents. Against Texas-Pan American, Cory Higgins and Shannon Sharpe had seven and six assists, respectively. Against Oregon State, Marcus Relphorde recorded eight assists with Higgins adding six dimes. Upon further research, there was no record of two players having six or more assists in a single game in three consecutive games.

## SCHOOL INFORMATION

Location.....	Boulder, Colo.
Founded .....	1876
Enrollment.....	30,128
Colors .....	Silver, Black, Gold
Nickname.....	Buffaloes (Buff)s
Mascot.....	Ralphie V, the Buffalo
Arena .....	Coors Events/Conference Center (11,064)
Elevation .....	5,345
NCAA Affiliation/Conference.....	Division I/The Big 12
President.....	Bruce Benson (Colorado '64)
Chancellor .....	Phil DiStefano (Ohio State '68)
Faculty Rep .	David Clough (Case Institute of Technology '68)
Director of Athletics.....	Mike Bohn (Kansas '83)
Web Site .....	www.CUBuffs.com
Big 12 web page .....	www.Big12sports.com
Athletic Department.....	303/492.7931
Ticket Office.....	303/492.8337

## HISTORY

First Year of Basketball.....	1901-02 (109 Years)
All-Time Record .....	1,136-1,095 (.509); 2,231 games
NCAA Berths.....	10
(Won 9, Lost 12; two third place finishes in '42, '55)	
Last Appearance.....	2002-03 (lost to Michigan State, 1st Rd.)
NCAA Appearances .....	2003, 1997, 1969, 1963, 1962, ..... 1955, 1954, 1946, 1942, 1940
NIT Appearances .....	8
(Won 8, Lost 7; won 1940 NIT; 1938 runner up)	
Last NIT Appearance....	2005-06 (lost Old Dominion, 1st Rd.)
Last Conference Title.....	1968-69 (Big 8)
(..... Big 8 (1962, 1963, 1969); Big 7 (1955))	
Mountain State Conference titles (1938, '39, '40, '42).....	4
League Championships Prior to 1924 .....	13
Overall Conference Titles .....	22
Big 12 Championships .....	0
Big 12 Tournament Record.....	7-15

## MEDIA INFORMATION

Radio Station/Phone .....	KKZN-760 AM/303/359.1271
Announcers .....	Mark Johnson (play-by-play) ..... Chris Lewis (analyst)

## TEAM INFORMATION

2009-2010 Overall Record.....	15-16
(..... Home: 13-3 Away: 2-10 Neutral: 0-3)	
Conference Record/Finish.....	6-10/8th
Starters Returning.....	5
Letterwinners Returning/Lost.....	9/4
Newcomers.....	4
Seniors (4) .....	Javon Coney, Cory Higgins, ..... Levi Knutson, Marcus Relphorde
Senior-Transfer (1).....	Carlton Brown (Utah)
Juniors (3) .....	Austin Dufault, Trey Eckloff, Nate Tomlinson
Junior-Transfer (1) .....	Sabatino Chen (Denver)
Sophomores (2).....	Alec Burks, Shane Harris-Tunks
Redshirt-Freshman (1).....	Shannon Sharpe
Freshmen (2) .....	Ben Mills, André Roberson
Student-Athletes Lost (4) .....	Trent Beckley (graduation), Casey Crawford (graduation), Dwight Thorne II (graduation), ..... Keegan Hornbuckle (transfer)

**FREE THROW SHOOTING:** Here's a look at the current team at the charity stripe with under five and two minutes to play.

<b>5:00-2:01</b>	Higgins:	25-of-26	96.2%
<b>Percentages</b>	Burks:	20-of-31	64.5%
	Relphorde:	9-of-14	64.3%
	Tomlinson:	4-of-4	100%
	Dufault:	3-of-4	75.0%
	Knutson:	4-of-4	100%
	Sharpe:	2-of-2	100%

<b>2:00-0:00</b>	Higgins:	30-of-35	85.7%
<b>Percentages</b>	Burks:	40-of-50	80.0%
	Relphorde:	11-of-13	84.6%
	Tomlinson:	12-of-14	85.7%
	Knutson:	9-of-11	81.2%
	Coney:	2-of-2	100%
	Sharpe:	5-of-7	71.4%
	Dufault:	2-of-4	50.0%
	Roberson:	0-of-2	00.0%

<b>OT Percentages</b>	Higgins:	9-of-9	100%
	Knutson:	4-of-4	100%
	Burks:	3-of-4	75.0%
	Relphorde:	2-of-3	66.7%

<b>Combined Total</b>	Higgins:	64-of-70	91.4%
	Burks:	63-of-85	74.1%
	Relphorde:	22-of-30	73.3%
	Tomlinson:	16-of-18	88.9%
	Knutson:	17-of-19	89.5%
	Sharpe:	7-of-9	77.8%
	Coney:	2-of-2	100%
	Dufault:	5-of-8	62.5%
	Roberson:	0-of-2	00.0%

**2011-12 SEASON:** The CU men's basketball team will be one of eight teams participating in the annual Honda Puerto Rico Tip-Off next season (Nov. 17, 18, 20) at the Coliseo de Puerto Rico, in the cosmopolitan Hato Rey district of San Juan. The field for the fifth annual Puerto Rico Tip-Off includes CU, Alabama, Iona, Maryland and Wichita State, along with Purdue and Temple, which are ranked in the preseason ESPN/USA Today Coaches Poll at No. 8 and No. 22, respectively. The final team will be announced at a later date.

**PRESEASON WOODEN LIST:** Cory Higgins and Alec Burks were selected to The John R. Wooden Award Preseason Top 50 list. The list is comprised of 50 student-athletes who, based on last year's individual performance and team records, are the early frontrunners for college basketball's most prestigious honor. Higgins and Burks are the fourth and fifth CU student-athletes, respectively to make the Wooden preseason list. The other Buffaloes to make the prestigious pre-season list are David Harrison (2003-04), Chauncey Billups (1995-96), and Donnie Boyce (1994-95).

**HIGGINS ALL-BIG 12 PRESEASON FIRST TEAM:** Cory Higgins was named to the All-Big 12 preseason first team. Players honored in the preseason voting were selected by the league head coaches, who are not permitted to vote for their own student-athletes. Higgins is a two-time third team selection. It marks the second time a CU student-athlete was named to the preseason squad when Richard Roby was selected in 2006-07. Sophomore guard Alec Burks was named an honorable mention selection.

**RECEIVING VOTES:** For the first time since the 2003-04 preseason, CU received votes (seven) in the Associated Press Top-25 preseason poll. In 2003-04, the Buffs entered the preseason with 12 votes fresh

**Pac-10 vs. BIG 12 IN AIR MILES:** From the David Plati (CU Associate AD/Sports Information Director) book of research, here's the difference in air miles between CU traveling to the 11 Big 12 sites and the soon-to-be 11 Pac-10 sites is only 1,982 more (or 180 miles per school, or only 30 additional minutes based on a conservative airspeed of 360 mph; 20 minutes at 450 mph). However, once pulled into the gate at the closest airport, whereas CU was, via car, van or bus, a collective 13 hours from the airport to the respective campuses in the Big 12, it will be just a shade over five hours (5:05) for the Pac-10 campus sites, with all less than an hour away (if making one connection on the way to Washington State, otherwise it's the only site with a drive time over an hour if you fly into Spokane; compared to six in the Big 12, four of which were two-hours plus). That also lowers the average distance to just 137 miles more per school. The numbers:

<b>Pac-10</b>	<b>Denver to</b>	<b>Air Miles</b>	<b>Local Airport</b>	<b>Campus</b>	<b>Miles</b>	<b>Time</b>
League Office	Oakland	946	Oakland International	Walnut Creek	28	0:40
Arizona	Tucson	640	Tucson International	Tucson	8	0:15
Arizona State	Phoenix	586	Sky Harbor International	Tempe	4	0:10
California	Oakland	946	Oakland International	Berkeley	12	0:25
Oregon	Eugene	980	Eugene Airport	Eugene	10	0:20
Oregon State	Eugene	980	Eugene Airport	Corvallis	35	0:45
Stanford	San Jose	934	San Jose International (SJI)	Palo Alto	20	0:30
UCLA	Los Angeles	840	LAX	Los Angeles	15	0:40
USC	Los Angeles	840	LAX	Los Angeles	10	0:20
Utah	Salt Lake City	379	Salt Lake City International	Salt Lake City	10	0:15
Washington	Seattle	1,026	Sea-Tac International	Seattle	20	0:40
#Washington St.	Lewiston via SLC	842	Lewiston Nez-Perce Regional	Pullman	30	0:45
#Washington St.	Spokane	830	Spokane International	Pullman	70	1:45
<b>TOTALS</b>	<b>(schools only)</b>	<b>8,993</b>			<b>174</b>	<b>5:05</b>

#—option 1: connecting flights through Salt Lake City (most options), Boise or Seattle; shorter drive time after landing.

#—option 2: direct flight into Spokane countered by 100-120 minute drive on a two-lane road over to Pullman.

<b>BIG 12</b>	<b>Denver to</b>	<b>Air Miles</b>	<b>Local Airport</b>	<b>Campus</b>	<b>Miles</b>	<b>Time</b>
League Office	Dallas	660	Dallas-Ft. Worth Int'l	Irving	10	0:20
Baylor	Dallas	660	Dallas-Ft. Worth Int'l	Waco	95	2:00
Iowa State	Des Moines	604	Des Moines International	Ames	40	0:55
Kansas	Kansas City	565	KCI	Lawrence	50	1:15
Kansas State	Kansas City	565	KCI	Manhattan	120	2:00
Missouri	Kansas City	565	KCI	Columbia	140	2:20
Nebraska	Lincoln	440	Lincoln Airport	Lincoln	5	0:10
Oklahoma	Oklahoma City	505	Will Rogers World (OKC)	Norman	20	0:30
Oklahoma State	Oklahoma City	505	Will Rogers World (OKC)	Stillwater	65	1:20
Texas	Austin	767	Austin-Bergstrom Int'l	Austin	10	0:15
Texas A&M	Houston	874	Houston Intercontinental	College Station	90	2:00
Texas Tech	Dallas-Lubbock	961	DFW-Preston Smith (Lubbock)	Lubbock	10	0:20
<b>TOTALS</b>	<b>(schools only)</b>	<b>7,011</b>			<b>645</b>	<b>13:05</b>

**Pac-10 CONFERENCE TERMANOLOGY:** When using the conference name in text, use a hyphen and a numeric 10 (you can use either of these): Pac-10 or Pacific-10. Do not omit the hyphen or use ALL CAPS for the PAC, although it appears as such on their current logo. Also do not use: PAC 10, PAC TEN, Pac 10, Pacific 10, Pac Ten, Pacific Ten.

**CU IN THE BIG 12/Pac-10 HARWOOD SERIES:** CU is 1-3 against the Pac-10 in the Harwood Series. The Buffs lost on the road to Oregon State, 74-69 (Dec. 4, 2009), and in their previous two years lost twice to Stanford (76-62 in 2008; 67-43 in 2007).

**CU VERSUS THE Pac-12:** For those curious of the Buffs record against the conference, here you go... CU is 39-41 (.488) against the 10 schools and 21-17 (.553) against Utah.

off their 2002-03 NCAA Tournament berth (their last appearance), instead they made the NIT.

**WHAT'S BACK THIS SEASON:** Cory Higgins (18.9 ppg.) and Alec Burks (17.1 ppg.) form one of the best 1-2 guard combos in the nation • The duo ranks third nationally of top returning scoring tandems at 36.0 points per game • Last year, Higgins scored 587 points and Burks (512 pts.) becoming the first CU duo to score over 500 points in single season since 1990-91 (Shaun Vandiver, 699; and Stevie Wise, 655) • Burks was fourth nationally among all freshmen in points per game and field goal percentage, and became the first CU freshman to score over 500 points in a single-season (512).

**BIG 12 COACHES:** With nine returning letter-winners and all five starters returning, the Big 12 Coaches preseason poll predicts the Buffs to finish in ninth place. Last season, CU finished the regular season in eighth place. It was the first in three seasons not finishing 12th. During 2005-06, CU ended up fifth in the conference standings.

**2010-11 BIG 12 PRESEASON POLL**

1. Kansas State (10) 119
2. Kansas (2) 109
3. Texas 99
4. Baylor 96
5. Missouri 82
6. Texas A&M 69
7. Texas Tech 52
8. Oklahoma State 51
9. Colorado 46
10. Nebraska 31
11. Oklahoma 27
12. Iowa State 11

**2009-10 RESULTS (15-16)**

Date	Opponent	Result
Nov. 13	<b>ARKANSAS-PINE BLUFF</b>	W, 88-72
Nov. 16	<b>COPPIN STATE</b>	W, 82-58
Nov. 18	<b>TEXAS SOUTHERN</b>	W, 88-77
Nov. 23	vs. Gonzaga (Maui)	L, 72-76
Nov. 24	vs. Arizona (Maui)	L, 87-91 (ot)
Nov. 25	at Chaminade (Maui)	W, 73-58
Dec. 1	<b>SAN FRANCISCO</b>	W, 78-54
Dec. 4	at Oregon State	L, 69-74
Dec. 7	<b>COLORADO CHRISTIAN</b>	W, 84-65
Dec. 10	at Colorado State	L, 62-77
Dec. 22	<b>CAL STATE NORTHRIDGE</b>	W, 92-58
Dec. 29	<b>YALE</b>	W, 70-59
Jan. 2	at Tulsa	L, 59-84
Jan. 5	<b>MIAMI (OHIO)</b>	W, 67-65
Jan. 9	*at 2/2 Texas	L, 86-103
Jan. 12	*22/24 <b>BAYLOR</b>	W, 78-71
Jan. 16	*13/12 <b>KANSAS STATE</b>	L, 81-87
Jan. 20	*at Oklahoma State	L, 78-90
Jan. 23	*at Texas A&M	L, 63-67
Jan. 27	* <b>NEBRASKA</b>	W, 72-60
Jan. 30	*at Iowa State	L, 63-64
Feb. 3	*1/1 <b>KANSAS</b>	L, 66-72 (ot)
Feb. 6	* <b>MISSOURI</b>	L, 66-84
Feb. 13	*at 9/9 Kansas State	L, 51-68
Feb. 17	* <b>OKLAHOMA</b>	W, 77-67
Feb. 20	*at 1/1 Kansas	L, 74-94
Feb. 24	*at Missouri	L, 63-92
Feb. 27	* <b>IOWA STATE</b>	W, 75-72
Mar. 2	*at Nebraska	W, 81-68
Mar. 6	* <b>TEXAS TECH</b>	W, 101-90
Mar. 10	vs. Texas Tech (Kansas City)	L, 67-82

\*-Big 12 Conference

**THE LAST TIME ...**

20-Point Scorer: 20, Alec Burks, vs. Western New Mexico, Jan. 5, 2011

30-Point Scorer: 30, Cory Higgins, Texas Tech, Mar. 6, 2010

40-Point Scorer: 42, Jaquay Walls, Iowa State (ot), Feb. 19, 2000

Three 20-point Scorers in Same Game:

vs. Oklahoma State: Kal Bay (21) Dominique Coleman(20), Richard Roby (20), Feb. 3, 2007

Five Double-Figure Scorers in Same Game at CSU-Bakersfield, Jan. 2, 2011: Alec Burks (19), Cory Higgins (16), Marcus Relphorde (11), Austin Dufault (10), Levi Knutson (10)

Six Double-Figure Scorers in Same Game: vs. Longwood, Dec. 19, 2010: Cory Higgins (18), Levi Knutson (17), Alec Burks (15), Marcus Relphorde (14), Andre Roberson (14), Austin Dufault (12)

Double-Double Performance: Andre Roberson (12 pts., 12 rebs.) vs. W. New Mexico (Jan. 5, 2011); Alec Burks (24 pts., 10 rebs.) vs. Texas Tech, Mar. 10, 2010

Triple-Double Performance:

David Harrison (20 points, 10 rebounds, 11 blocks), vs. Nebraska, Mar. 8, 2003

Player with 20 or More Rebounds: 21, Stephane Pelle vs. Stetson, Nov. 24, 2002

Player with 15 or More Rebounds: 17, Jermyl Jackson-Wilson, vs. Denver, Nov. 10, 2006

Player with 10 or More Rebounds: 12, Andre Roberson, Western New Mexico (Jan. 5, 2011)

Player with 10 or More Assists: 10, Marcus Hall, vs. Baylor (2ot), Kansas City, Mar. 13, 2008

Player with Five or More Steals: 6, Alec Burks, Yale, Dec. 29, 2009

Player with Five or More Three-Point FGs Made: 6, Levi Knutson, vs. Oregon State, Dec. 4, 2010; 6, Richard Roby, vs. Nebraska, Jan. 25, 2006

Player with Five or More Blocked Shots

5, Marcus King-Stockton vs. Oklahoma (Kansas City, Mo.), Mar. 14, 2008

Scored 100 or More Points, Team: 104, Longwood, Dec. 19, 2010

101, vs. Texas Tech (90), March 6, 2010

Scored under 50 Points, Team: 41, at Nebraska (46), Feb. 18, 2009

Scored under 40 Points, Team: 35, vs. Texas (78), Kansas City, Mo., Mar. 10, 2000

Shot 60.0 Percent or Better from the Field, Team: 61.9, at Nebraska, Mar. 2, 2010

Shot Under 35.0 Percent from the Field, Team: 34.4, Jan. 30, 2010 at Iowa State

Made 30 or More Free Throws, Team: 36, at Georgia, Nov. 16, 2010

Made 10 or more Three-Point Field Goals, Team: 10, Longwood, Dec. 19, 2010  
12, at Nebraska, Mar. 2, 2010

Had 50 or More Rebounds, Team: 52 vs. W. New Mexico (Jan. 5, 2011);  
51, vs. Texas Tech, Feb. 11, 2006; 50, vs. Alcorn State, Nov. 23, 2010

Had 25 or more assists, Team: 27, Dec. 22, 2009 vs. CSU Northridge, Dec. 22, 2009

Had 15 or More Steals, Team: 19, vs. Savannah State, Jan. 3, 2006

Had 10 or More Blocked Shots, Team: 10, vs. Pepperdine, Dec. 4, 2006

Had Fewer than 10 Turnovers, Team: (since 2005-06)

4, at Iowa State, Jan. 30, 2010 (L, 63-64)

5, vs. Baylor, Jan. 12, 2010 (W, 78-71); 5, vs. Utah, Dec. 7, 2005 (W, 76-52)

6, vs. San Francisco, Dec. 1, 2009 (W, 78-54)

7, vs. Colorado State, Dec. 8, 2010 (90-83, ot); 7 vs. Idaho State, Nov. 12, 2010 (W, 88-80)

8, vs. Longwood, Dec. 19, 2010 (104-59)

9, vs. MD Eastern Shore, Dec. 29, 2010; 9 vs. The Citadel, Dec. 17, 2010 (89-61)

9, at San Francisco, Nov. 20, 2010 (L, 81-83, ot); 9, Alcorn State, Nov. 23, 2010 (W, 91-51)

**CU RECORD WHEN...**

	Big 12	All Games
Leading or tied at halftime:	-	10-1
Trailing at halftime:	-	1-2
Tied at halftime	-	0-1
Shoot 50 percent or higher:	-	6-0
Shoot lower than 49.9 percent:	-	5-4
Higher percentage than oppt.:	-	9-0
Lower percentage than oppt.:	-	2-4
Score 60-69 points:	-	0-1
Score 70-79 points:	-	1-2
Score 80-89 points:	-	5-1
Score 90-plus points:	-	4-0
Score 100-plus points	-	1-0
More rebounds than oppt.:	-	8-0
Fewer rebounds than oppt.:	-	2-4
Same amount of rebounds:	-	1-0
40+ rebounds:	-	3-0
50+ rebounds:	-	2-0
Fewer than 40 rebounds:	-	7-4
Fewer turnovers than oppt.:	-	10-1
Equal/more turnovers than oppt.:	-	1-0
Games decided by 5 or fewer pts:	-	0-1
Televised games:	-	9-2
Games vs. ranked opponents:	-	-
More bench points than oppt.:	-	8-0
Fewer bench points than oppt.:	-	3-3
Same bench points than oppt.:	-	0-1
Playing in November:	-	3-3
Playing in December:	-	6-1
Playing in January:	-	2-0

**2010-2011 Game Leaders (Career)  
Scoring Double-Digits**

	Career	'10-11
Cory Higgins	87	14
Alec Burks	43	14
Marcus Relphorde	33	12
Austin Dufault	25	7
Levi Knutson	23	10
Nate Tomlinson	13	-
Andre Roberson	3	3
Javon Coney	1	-

**Double-Digit Rebounding Games**

	Career	'10-11
Andre Roberson	4	4
Marcus Relphorde	2	-
Cory Higgins	2	-
Alec Burks	2	-
Austin Dufault	1	-

**Double-Doubles Career '10-11**

	Career	'10-11
Andre Roberson	3	3
Alec Burks	2	-
Marcus Relphorde	2	-
Cory Higgins	2	-
Austin Dufault	1	-

**20-Point Games Career '10-11**

	Career	'10-11
Cory Higgins	28	3
Alec Burks	16	8
Levi Knutson	1	1
Austin Dufault	1	-
Marcus Relphorde	1	-
Nate Tomlinson	1	-

**30-Point Games Career '10-11**

	Career	'10-11
Cory Higgins	5	-

**Scoring Leaders Career '10-11**

	Career	'10-11
Cory Higgins	40	3
Alec Burks	21	9
Levi Knutson	3	2
Austin Dufault	3	1
Marcus Relphorde	3	-
Javon Coney	1	-
Nate Tomlinson	1	-

**Rebounding Career '10-11**

	Career	'10-11
Cory Higgins	27	1
Alec Burks	17	3
Andre Roberson	11	11
Austin Dufault	11	1
Marcus Relphorde	9	2
Nate Tomlinson	4	-
Levi Knutson	3	-
Javon Coney	1	-

**Assist Leaders Career '10-11**

	Career	'10-11
Nate Tomlinson	44	7
Cory Higgins	29	4
Marcus Relphorde	10	4
Alec Burks	7	3
Levi Knutson	2	-
Javon Coney	1	-
Andre Roberson	1	1
Shannon Sharpe	1	1
Casey Crawford	2	-
Austin Dufault	2	-

**Steal Leaders Career '10-11**

	Career	'10-11
Cory Higgins	45	4
Nate Tomlinson	12	3
Marcus Relphorde	10	2
Alec Burks	7	1
Levi Knutson	6	3
Andre Roberson	5	5
Austin Dufault	4	-
Javon Coney	1	-
Trey Eckloff	1	-

**Block Leaders Career '10-11**

	Career	'10-11
Cory Higgins	20	2
Austin Dufault	12	2
Andre Roberson	8	8
Alec Burks	7	-
Shane Harris-Tunks	7	-
Marcus Relphorde	4	1
Trey Eckloff	4	-
Shannon Sharpe	3	3
Levi Knutson	1	-
Javon Coney	1	-

**Career Games Starts Played**

	Career	'10-11
Cory Higgins	108	109
Austin Dufault	72	77
Nate Tomlinson	61	73
Marcus Relphorde	45	45
Alec Burks	43	44
Levi Knutson	4	100
Javon Coney	1	55
Trey Eckloff	1	52
Shane Harris-Tunks	3	28
Shannon Sharpe	3	15
Andre Roberson	-	15
Ben Mills	-	12

**2010-11 GAME-BY-GAME LEADERS**

	<b>Overall</b>	<b>Home</b>	<b>Away</b>	<b>Neutral</b>
All Games	11-4	9-0	1-3	1-1
Conference	0-0	0-0	0-0	0-0
Non-Conference	11-4	9-0	1-3	1-1

<b>DATE</b>	<b>OPPONENT</b>	<b>W/L</b>	<b>SCORE</b>	<b>AT</b>	<b>HIGH SCORER</b>	<b>HIGH REB.</b>	<b>ASSISTS</b>	<b>BLOCKS</b>	<b>3-PTERS MADE</b>	<b>STEALS</b>
Nov. 12	IDAHO STATE	W	88-80	6874	Burks (20)	Roberson (11)	Higgins (4)	Sharpe (1)	Tomlinson (2)	Higgins (4)
Nov. 16	at Georgia	L	74-83	6406	Burks (21)	Relphorde, Roberson (7)	Burks (3), Sharpe (3)	Dufault (1), Roberson (1)	Knutson (1), Relphorde (1), Tomlinson (1)	Higgins (4)
Nov. 20	at San Francisco	L	81-83 (ot)	2747	Burks (29)	Higgins (8)	Relphorde (3)	Higgins (2), Sharpe (2)	Burks (2), Higgins (2)	Roberson (3)
Nov. 23	ALCORN STATE	W	91-51	2778	Burks (22)	Roberson (9)	Roberson (4), Roberson (4)	Roberson (2)	Burks, Relphorde (2), Tomlinson (2)	Tomlinson(3)
Nov. 28	at Harvard	L	66-82	954	Higgins (21)	Burks (5)	Tomlinson (2)	-	Higgins (1), Relphorde (1)	Tomlinson (3)
Nov. 30	TX-PAN AMERICAN	W	83-64	2641	Knutson (18)	Burks (6)	Higgins (7)	Roberson (2)	Relphorde (4)	Roberson (3)
Dec. 4	OREGON STATE	W	83-57	6363	Knutson (22)	Relphorde (6) Roberson (6)	Relphorde (8)	Roberson (2)	Knutson (6)	Burks (2), Roberson (2)
Dec. 8	COLORADO STATE	W	90-83 (ot)	7219	Burks (25)	Burks (5) Roberson (5)	Higgins (3), Relphorde (3), Tomlinson (3)	Dufault (3)	Knutson (1), Relphorde (1), Tomlinson (1)	Burks (2)
Dec. 17	THE CITADEL	W	89-61	4368	Burks (19)	Roberson (10)	Tomlinson (8)	Roberson (2)	Higgins (4)	Relphorde (3)
Dec. 19	LONGWOOD	W	104-59	2556	Higgins (18)	Roberson (13)	Burks (5), Sharpe (5)	Sharpe (2)	Knutson (3)	Higgins (2), Knutson (2)
Dec. 22	vs. New Mexico	L	76-89	2867	Burks (25)	Roberson (8)	Relphorde (3), Tomlinson (3)	Higgins (1), Roberson (1)	Knutson (2)	Knutson (2), Roberson (2)
Dec. 23	vs. Indiana	W	78-69	2375	Higgins (22)	Dufault (7)	Tomlinson (5)	-	Higgins (1), Roberson (1), Tomlinson (1)	Higgins (4)
Dec. 29	MD EAST. SHORE	W	92-65	3896	Dufault (18)	Roberson (8)	Tomlinson (6)	Roberson (3)	Knutson (2)	Knutson (2), Roberson (2)
Jan. 2	at CSU-Bakersfield	W	85-73	1464	Burks (19)	Roberson (10)	Burks (4)	Higgins (1)	Knutson (2), Tomlinson (2)	Tomlinson (3)
Jan. 5	WESTERN N. M.	W	90-72	2139	Burks (20)	Roberson (12)	Higgins (4)	Relphorde (3)	Knutson (3)	Roberson (3)

**COLORADO STARTERS**

<b>Date</b>	<b>Opponent</b>	<b>Score</b>	<b>Starter</b>	<b>Total</b>	<b>Starter</b>	<b>Total</b>	<b>Starter</b>	<b>Total</b>	<b>Starter</b>	<b>Total</b>	<b>Starter</b>	<b>Total</b>
Nov. 12	IDAHO STATE	W, 88-80	Burks	20	Higgins	16	Relphorde	12	Tomlinson	6	Dufault	9
Nov. 16	at Georgia	L, 74-83	Burks	21	Higgins	15	Relphorde	8	Tomlinson	5	Dufault	13
Nov. 20	at San Francisco	L, 81-83 (ot)	Burks	29	Higgins	28	Relphorde	0	Sharpe	0	Dufault	1
Nov. 23	ALCORN STATE	W, 91-51	Tomlinson	8	Knutson	7	Relphorde	15	Sharpe	4	Dufault	10
Nov. 28	at Harvard	L, 66-82	Burks	20	Higgins	21	Relphorde	12	Tomlinson	0	Dufault	7
Nov. 30	TX-PAN AMERICAN	W, 83-64	Burks	12	Higgins	15	Relphorde	16	Tomlinson	0	Dufault	6
Dec. 4	OREGON STATE	W, 83-57	Burks	15	Higgins	9	Relphorde	12	Knutson	22	Dufault	12
Dec. 8	COLORADO STATE	W, 90-83 (ot)	Burks	25	Higgins	15	Relphorde	18	Tomlinson	8	Dufault	8
Dec. 17	THE CITADEL	W, 89-61	Burks	19	Higgins	18	Relphorde	7	Tomlinson	3	Dufault	8
Dec. 19	LONGWOOD	W, 104-59	Burks	15	Higgins	18	Relphorde	14	Tomlinson	0	Dufault	12
Dec. 23	vs. New Mexico	L, 76-89	Burks	25	Higgins	10	Relphorde	13	Tomlinson	2	Dufault	2
Dec. 24	vs. Indiana	W, 78-69	Burks	9	Higgins	22	Relphorde	14	Tomlinson	5	Dufault	10
Dec. 29	MD EASTERN SHORE	W, 92-65	Burks	15	Higgins	15	Relphorde	15	Tomlinson	3	Dufault	18
Jan. 2	at Cal State Bakersfield	W, 85-73	Burks	19	Higgins	16	Relphorde	11	Tomlinson	6	Dufault	10
Jan. 5	WESTERN NEW MEXICO	W, 90-72	Burks	20	Higgins	15	Relphorde	13	Sharpe	2	Dufault	9

**2010-11 GAME-BY-GAME TEAM STATISTICS** (BOLD INDICATES HIGH FOR THE SEASON)

Game	Score	FG-FGA	Pct.	3-Pt.-FGA	Pct.	FT-FTA	Pct.	O-D	TOT	F/EJ	A	TO	BLK	S
COLORADO	88	28-58	.483	6-15	.400	26-33	.788	8-21	29	17/0	17	<b>7</b>	1	10
Idaho State	80	31-56	.554	6-12	.500	12-15	.800	7-22	29	22/0	13	17	2	3
COLORADO	74	22-53	.415	3-14	.214	27-36	.750	13-22	35	<b>30/1</b>	8	14	2	8
at Georgia	83	25-53	.472	6-15	.400	27-43	.628	16-24	40	26/0	14	20	3	7
COLORADO	81	29-68	.426	6-20	.300	17-28	.607	11-25	36	19/0	9	9	6	10
at San Francisco	83 (ot)	26-59	.441	12-19	.632	19-27	.704	12-31	43	23/1	15	17	4	2
COLORADO	91	<b>32-67</b>	.478	7-17	.412	20-25	.800	<b>13-37</b>	50	18/0	19	9	5	11
Alcorn State	51	18-64	.281	3-16	.188	12-21	.571	13-23	36	18/0	8	15	5	9
COLORADO	66	19-49	.388	2-9	.222	26-32	.813	13-15	28	21/0	5	15	0	7
at Harvard	82	25-49	.510	10-23	.435	22-26	.846	11-20	31	23/1	22	16	6	6
COLORADO	83	32-59	.542	9-15	<b>.600</b>	10-13	.769	15-19	34	<b>14/0</b>	<b>24</b>	15	4	<b>13</b>
TX-Pan American	64	21-50	.420	11-26	.423	11-13	.846	11-13	24	16/0	12	21	3	10
COLORADO	83	34-58	.586	<b>8-23</b>	.348	7-9	.778	9-24	33	17/1	20	13	4	6
Oregon State	57	21-54	.389	3-14	.214	12-21	.571	14-16	30	15/0	9	17	2	9
COLORADO	90	26-54	.481	3-7	.429	<b>35-41</b>	.854	9-20	29	21/0	12	<b>7</b>	4	4
Colorado State	83 (ot)	32-58	.552	5-15	.333	14-19	.737	10-21	31	26/0	14	15	3	1
COLORADO	89	34-57	<b>.596</b>	<b>10-20</b>	.500	11-16	.688	4-29	33	17/0	23	9	3	10
The Citadel	61	24-58	.414	3-14	.214	10-13	.769	7-22	20	13/0	14	13	1	3
COLORADO	<b>104</b>	<b>38-72</b>	.528	<b>10-17</b>	.588	18-23	.783	19-29	48	13/0	23	8	4	5
Longwood	59	23-60	.383	4-18	.222	9-14	.643	11-19	30	19/1	14	13	3	2
COLORADO	76	27-58	.466	5-22	.227	17-22	.773	11-12	23	19/0	9	12	2	6
New Mexico	89	30-49	.612	5-12	.417	24-28	.857	9-26	35	21/0	19	18	0	6
COLORADO	78	24-44	.545	3-10	.300	27-31	<b>.871</b>	8-22	30	23/2	10	15	0	10
Indiana	69	24-59	.407	5-14	.357	16-25	.640	18-14	32	22/0	9	13	2	8
COLORADO	92	34-57	<b>.596</b>	5-12	.417	19-25	.760	12-27	29	15/0	19	9	5	5
MD Eastern Shore	65	25-60	.417	6-21	.286	9-15	.600	10-15	25	25/0	7	10	1	4
COLORADO	85	31-63	.492	4-16	.250	19-24	.792	11-29	40	16/0	12	11	1	10
Cal State Bakersfield	73	23-65	.354	9-21	.429	18-22	.818	14-24	38	19/0	10	13	0	9
COLORADO	92	36- <b>76</b>	.474	3-15	.200	17-23	.739	<b>23-29</b>	<b>52</b>	16/1	12	11	<b>7</b>	8
W. New Mexico	70	25-62	.403	6-19	.316	14-17	.824	10-20	30	21/1	12	16	4	7

**STARTERS vs. BENCH**

Date	Opponent	Score	Starter Points			Bench Points		
			CU	Oppt.	Diff.	CU	Oppt.	Diff.
Nov. 12	IDAHO STATE	W, 88-80	63	69	-6	25	11	+14
Nov. 16	at Georgia	L, 74-83	62	69	-7	12	14	-2
Nov. 20	at San Francisco	L, 81-83 (ot)	60	56	+4	21	27	-6
Nov. 23	ALCORN STATE	W, 91-51	44	28	+16	47	23	+24
Nov. 28	at Harvard	L, 66-82	60	65	-5	6	17	-13
Nov. 30	TEXAS-PAN AMERICAN	W, 83-64	49	61	-12	34	3	+31
Dec. 4	OREGON STATE	W, 83-57	70	30	+50	13	27	-14
Dec. 8	COLORADO STATE	W, 90-83 (ot)	84	60	+24	6	23	-17
Dec. 17	THE CITADEL	W, 89-61	55	51	+4	34	10	+24
Dec. 19	LONGWOOD	W, 104-59	59	45	+14	45	14	+31
Dec. 22	vs. New Mexico	L, 76-89	52	65	-13	24	24	-
Dec. 23	vs. Indiana	W, 78-69	60	44	+16	18	25	-7
Dec. 29	MARYLAND EASTERN SHORE	W, 92-65	66	54	+12	26	11	+15
Jan. 2	at Cal State Bakersfield	W, 85-73	62	60	+2	23	13	+10
Jan. 5	WESTERN NEW MEXICO	W, 90-72	59	53	+6	33	17	+16



**TAD BOYLE**  
**HEAD COACH**  
 1st Year at Colorado  
 5th Year Overall

**YEAR-BY-YEAR**  
**UNIVERSITY OF COLORADO**

**Head Coach ..... 2010-present**

- Named the 18th head coach in CU men's basketball history on Monday, April 19.
- Currently 11-4 after his first 15 games ranking second all-time among first-year CU coaches (Patton 12-3; Walseth 10-5; Bzdelik 8-7)
- Successfully won his CU debut with an 88-80 home win against Idaho State (Nov. 12).
- Became first CU head coach in 20 years since Joe Harrington (1990-91) to win coaching debut.

**NORTHERN COLORADO**

**Head Coach ..... 2006-2010**

**2009-10: 25-8**

- Advanced to the post season for the first time in school history, advancing to the quarterfinals of the CollegeInsiders.com Tournament while racking up a school record 25 victories.
- Coached one first-team All-Big Sky member and also the Big Sky Conference Defensive Player of the Year.
- resurrected the basketball program at Northern Colorado, including a breakout season in 2009-10 (25-8, .758) and finished second in the Big Sky Conference.
- Guided the Bears to a 56-66 record (.459) the past four seasons
- Awarded the NABC Division I All-District Coach of the Year, the Big Sky Coach of the Year by both *The Sporting News* and *CollegeInsider.com*, where he was also named a finalist for the National Mid-Major Coach of the Year award.

**2008-09: 14-18 ..... UNC's first Big Sky Tourn. berth**

- Improved from one conference win his first season to an even 8-8 mark and earned the school's first Division I post season trip, to the Sun Belt Conference Tournament.

**2007-08: 13-16 ..... Won at SDSU (RPI top 50)**

- Defeated Colorado State, 72-59, in his second season and also knocked off San Diego State, 72-59. The Aztecs were ranked among the nation's top 50 teams in the RPI rankings at that time.

**PERSONAL**

DATE OF BIRTH .....Jan. 6, 1963  
 BIRTHPLACE.....Pueblo, Colo.  
 WIFE .....Ann  
 CHILDREN..... Jack, Claire, Pete  
 HIGH SCHOOL..... Greeley (Colo.) Central, 1981  
 COLLEGE ..... Kansas, 1985  
 .....B.S., Business Administration

**2006-07: 4-24 .....Bears' first year in Big Sky**

- Named the 17th coach in UNC history on April 25, 2006.
- At that point, the Bears were in the midst of a transition to Division I in its first season as a member of the Big Sky Conference.
- Finished last nationally in the final RPI rankings for that season. There were, however, flashes of times to come that season, including close losses to both Colorado (88-86) and Colorado State (75-66).

**WICHITA STATE**

**Associate Head Coach ..... 2000-06**

- spent six seasons with current Texas A&M head coach Mark Turgeon and was part of another turn around that saw the Shockers improve from 9-19 (.321) his first year there to one of the nation's top mid-major teams in 2006 when Wichita State went 26-9 and advanced to the Sweet 16 of the NCAA Tournament. The Shockers eventually lost to Final Four Cinderella George Mason in the regional semifinals
- finished with a No. 21 final ranking.
  - 2005-06: 26-9 MVC champs, NCAA Sweet 16
  - 2004-05: 22-10 ..... NIT third round
  - 2003-04: 21-11 ..... NIT
  - 2002-03: 18-12 ..... NIT
  - 2001-02: 15-15 9-9 in Missouri Valley Conf.
  - 2000-01: 9-19

**JACKSONVILLE STATE (Ala.)**

**Assistant Coach..... 1998-2000**

- Boyle reconnected with Mark Turgeon, this time as an assistant coach at Jacksonville State (Ala.), where they helped turn a team that was 8-18 into a 17-11 squad in just one season.
  - 1999-00: 17-11 (12-6 in TransAmerica Conference)
  - 1998-99: 8-18 ..... -

**TENNESSEE**

**Director Basketball Operations..... 1997-98**

- followed Jerry Green to Tennessee, where he was director of basketball operations when the Vols won 20 games and advanced to the NCAA Tournament.

**OREGON**

**Assistant Coach..... 1994-97**

- first collegiate coaching job (1994) an assistant under Jerry Green. Mark Turgeon was also an assistant from 1993-97.
- spent three seasons and helped the Ducks to the 1995 NCAA Tournament and 1997 NIT.
  - 1996-97: 17-11 ..... NIT
  - 1995-96: 16-13 ..... -
  - 1994-95: 19-9 ..... NCAA Tournament

**BOYLE vs. THE NATION**

Air Force.....	1-2
Alcorn State.....	1-0
Arizona State.....	0-1
Bakersfield, Cal State.....	1-0
Ball State.....	0-1
Baylor.....	0-0
Bowling Green.....	1-1
Citadel, The.....	1-0
Colorado.....	0-1
Colorado Christian.....	1-0
Colorado State.....	3-2
Colo.-Colorado Springs.....	0-1
Creighton.....	0-1
Denver.....	4-2
Eastern Michigan.....	0-1
Eastern Washington.....	4-4
Fresno State.....	0-1
Georgia.....	0-1
Gonzaga.....	0-1
Harvard.....	0-1
Hawai'i.....	1-0
Idaho State.....	5-5
Indiana.....	1-0
Iowa.....	0-1
Iowa State.....	0-0
Johnson & Wales.....	4-0
Kansas.....	0-0
Kansas State.....	0-0
Liberty.....	0-1
Longwood.....	1-0
Louisiana Monroe.....	1-0
Maryland Eastern Shore.....	1-0
McNeese State.....	1-0
Missouri.....	0-0
Montana.....	2-7
Montana State.....	4-4
Nebraska.....	0-0
New Mexico.....	0-1
North Dakota.....	2-0
Northern Arizona.....	5-3
Northern Iowa.....	0-0
Oklahoma.....	0-1
Oklahoma State.....	0-0
Oregon.....	0-1
Oregon State.....	1-2
Pacific.....	0-1
Portland.....	2-1
Portland State.....	1-7
Purdue.....	0-1
Sacramento State.....	6-2
San Diego State.....	1-1
San Francisco.....	0-1
San Jose State.....	1-1
Southern.....	1-0
Southern Utah.....	1-0
Texas.....	0-0
Texas A&M.....	0-0
Texas Christian.....	1-0
Texas-Pan American.....	1-0
Texas Southern.....	1-0
Texas State.....	1-1
Texas Tech.....	0-0
VMI.....	1-0
Weber State.....	2-6
Western New Mexico.....	1-0
Wyoming.....	0-1
<b>TOTAL.....</b>	<b>67-70</b>

**WHAT WAS SAID**

"This is it (my dream job), there's no doubt. I remember talking with Mark Turgeon once when he asked me where I wanted to be in 10 years, and I said the head coach at the University of Colorado. This is a destination job. I'm humbled and honored."

- *University of Colorado head coach Tad Boyle, the day he was hired as the new CU men's basketball coach*

"CU is getting a great person, a guy with great character and a value system, which is most important. He's a very well-rounded basketball coach and an excellent recruiter. He's a guy who will be very good with alumni and boosters. He's got great people skills and he develops relationships. Good coaches never stop trying to get better, and Tad does that. He was great as an assistant - extremely loyal, hard working and positive."

- *Mark Turgeon, Texas A&M Head Basketball Coach*

"This exciting process was all about both the young men we have currently and those in the future who will be joining our program, and is an investment in them and represents the competitive spirit, teamwork, passion and dedication they stand for. Tad Boyle represents everything that is right about college basketball. We look forward to his leadership, poise and competitive drive to unite all our collective Buff interests to support our team and this enterprise that has so much promise for the long term."

- *Mike Bohn, University of Colorado Athletics Director on what made Tad Boyle stand out above the other candidates*

"It's an incredible opportunity for him, but a phenomenal hire for Colorado. He's worked hard to get to this point; he's got an amazing background. I'm thrilled to death for him. I've been around some great basketball minds - Bill Self (Kansas), John Calipari (Kentucky), Alvin Gentry (Phoenix Suns), Greg Popovich (San Antonio Spurs), to name a few. A lot of quality guys have helped me coach. Tad has the same qualities those guys have. His kids play hard and unselfishly. They guard and play smart. He had those qualities as a player and he values them as a coach. He'll also make that program part of the whole community, and that's important at a school. The football coach, the women's coaches . . . they'll all love him. I love college athletics; it's more of a we thing than (in the NBA). You support everything. Tad will do that. This is an incredible opportunity for him and just as an incredible opportunity for Colorado."

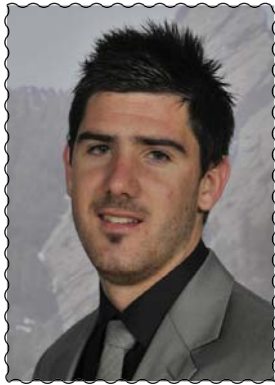
- *Larry Brown, Charlotte Bobcats Head Coach and former University of Kansas head coach (1983-1988)*

"Tad's a heckuva coach and a lot better guy. I know that for a fact. I know you have to win at that level, and he'll win the right way. (The hiring of Boyle) "A very wise move on Colorado's part; the test of time will show that. I'm not saying that to kiss anybody's butt; I believe it."

- *Don Meyer, former legendary coach, Northern State University, winner of 923 games*

"I am happy for Tad and his family. Colorado made a great hire. Last year, he had a great season at Northern Colorado and he had that program moving in a positive direction. I believe he will have the same impact at CU."

- *Former teammate and current Kansas assistant coach Danny Manning*



# NATE TOMLINSON #1

Junior • Guard • 6-3 • 190 • Sydney, Australia

PTS	REB	AST	ST	MIN	FG%	FT%	3-PT%
3.6	2.1	2.9	1.0	22.8	.515	.625	.444

- Missed first game of season vs. Western New Mexico (hip) only his fourth missed game in three years.

- Tied career-high with eight assists against The Citadel (one turnover in 19 minutes); also added another six assists vs. UMES

- Last five games at the point: 17 assists, 10 turnovers at the point
- Four games with four or more assists

- Three steals in each of the Harvard, Alcorn State games
- Season-best four rebounds vs. Indiana, and at Harvard

- Made key three-pointer at the end of the first half against Colorado State at the buzzer cutting CU deficit from six to three points.

- three-of-five from field (8 pts.), three boards, three assists vs. Rams.
- 60 starts at the point guard (72 career games)

## 2009-10 (Sophomore Year)

PTS	REB	AST	ST	MIN	FG%	FT%	3-PT%
5.3	2.5	4.2	1.1	27.3	.462	.822	.433

- Ran the point: More assists than turnovers: 23 of 32 games
- led in assists 15 of his last 18 games (22 times, 4 shared)
- surpassed his assist total from a year ago, 130 in 2009-10
- 2.03 Assist-Turnover Ratio
- Big 12-only stats: third in turnover-assist ratio (2.2) and fifth in assists (4.4).

## 2008-09 (Freshman Year)

PTS	REB	AST	ST	MIN	FG%	FT%	3-PT%
7.4	2.6	3.0	0.6	33.6	.461	.725	.427

- started all 28 games he played in
- led team in assists; 1.10 Assist-Turnover Ratio

## 2009-10 Totals

Points	20, Arizona (11/24)
FG Made	7, Arizona (11/24)
FG Attempts	9, Arizona (11/24)
3-Pt. Made	3, Arizona (11/24)
3-Pt. Attempts	5, Nebraska (1/27)
FT Made	6, Gonzaga (11/23)
FT Attempts	7, Gonzaga (11/23)
Rebounds	8, Oklahoma (2/17)
Assists	8, twice
Steals	5, Chaminade (11/25)
Minutes	38, Kansas (2/3)

## Personal Bests

### Points

Season	8	twice
Big 12	13	Oklahoma (Feb. 17, 2010)
Career	20	Arizona (Nov. 24, 2009)

### Field Goals

Season	3	twice
Big 12	4	twice
Career	8	at Stanford (Nov. 29, 2008)

### Field Goals Attempts

Season	5	Colorado State (Dec. 8, 2010)
Big 12	8	at Texas Tech (Jan. 20, 2009)
Career	12	twice

## 3-Pointers Made

Season	2	three times
Big 12	3	three times
Career	4	twice

## 3-Point Attempts

Season	4	Idaho State (Nov. 12, 2010)
Big 12	5	three times
Career	7	at SMU (Jan. 5, 2009)

## Free Throws

Season	2	twice
Big 12	4	Nebraska (Jan. 27, 2010)
Career	6	Gonzaga (Nov. 23, 2009)

## Free Throw Attempts

Season	4	Indiana (Dec. 23, 2010)
Big 12	4	twice
Career	7	Gonzaga (Nov. 23, 2009)

## Rebounds

Season	4	twice
Big 12	8	Oklahoma (Feb. 17, 2010)
Career	8	Oklahoma (Feb. 17, 2010)

## Offensive Rebounds

Season	1	Colorado State (Dec. 8, 2010)
Big 12	3	Iowa State (Jan. 27, 2009)
Career	3	Iowa State (Jan. 27, 2009)

## Defensive Rebounds

Season	4	twice
Big 12	8	Oklahoma (Feb. 17, 2010)
Career	8	Oklahoma (Feb. 17, 2010)

## Assists

Season	8	The Citadel (Dec. 17, 2010)
Big 12	7	Texas A&M (Mar. 4, 2009)
Career	8	three times

## Steals

Season	3	three times
Big 12	4	twice
Career	5	Chaminade (Nov. 25, 2009)

## Blocks

Season	1	MD Eastern Shore (Dec. 29, 2010)
Big 12	-	
Career	1	MD Eastern Shore (Dec. 29, 2010)

## Minutes

Season	36	Colorado State (Dec. 8, 2010)
Big 12	44	Texas (Feb. 14, 2009)
Career	44	Texas (Feb. 14, 2009)

## 2010-11 Game-by-Game (junior)

Game	GS	Min	FGs	3FGs	FTs	O-D-R	Pf	A	To	BL	ST	Pts
<b>IDAHO STATE</b>	*	29	2-4	2-4	0-0	0-2-2	3	3	2	0	0	6
at Georgia	*	33	1-1	1-1	2-2	0-0-0	4	1	2	0	1	5
at San Francisco	-	23	2-2	1-1	0-0	0-3-3	3	1	1	0	2	5
<b>ALCORN STATE</b>	*	27	3-4	2-3	0-0	0-1-1	2	2	0	0	3	8
at Harvard	*	31	0-1	0-0	0-0	0-4-4	2	2	0	0	3	0
<b>TX-PAN AMERICAN</b>	*	1	0-0	0-0	0-0	0-0-0	0	0	1	0	0	0
<b>OREGON STATE</b>	-	16	0-2	0-2	0-0	0-1-1	2	2	2	0	0	0
<b>COLORADO STATE</b>	*	36	3-5	1-3	1-2	1-2-3	3	3	1	0	1	8
<b>THE CITADEL</b>	*	19	1-2	1-2	0-0	0-2-2	4	8	1	0	1	3
<b>LONGWOOD</b>	*	17	0-1	0-1	0-0	0-2-2	3	3	1	0	0	0
vs. New Mexico	*	15	1-4	0-3	0-0	0-2-2	5	3	1	0	0	2
vs. Indiana	*	34	1-3	1-3	2-4	0-4-4	3	5	5	0	0	5
<b>MD EASTERN SHORE</b>	*	19	1-1	1-1	0-0	0-3-3	2	6	2	1	0	3
at Cal St. Bakersfield	*	19	2-3	2-3	0-0	0-2-2	3	0	1	0	3	6
<b>WESTERN N.MEXICO</b>												did not play

## 2009-10 Game-by-Game (sophomore)

Game	GS	Min	FGs	3FGs	FTs	O-D-R	Pf	A	To	BL	ST	Pts
ARK.-PINE BLUFF	-	32	2-5	1-2	2-2	0-6-6	3	7	1	0	0	7
COPPIN STATE	-	15	0-3	0-3	0-0	0-7-7	3	3	1	0	0	0
TEXAS SOUTHERN	-	24	3-3	2-2	0-0	0-1-1	1	2	2	0	2	8
vs. Gonzaga	-	33	1-5	0-1	6-7	0-1-1	2	8	2	0	0	8
vs. Arizona	-	33	7-9	3-3	3-3	1-2-3	3	4	2	0	0	20
at Chaminade	-	28	2-3	1-1	0-0	0-4-4	2	8	3	0	5	5
SAN FRANCISCO	-	26	2-2	2-2	0-0	0-3-3	1	6	1	0	2	6
at Oregon State	-	26	1-5	0-3	0-3	0-3-3	3	3	2	0	0	2
COLO. CHRISTIAN	*	28	1-2	0-1	4-4	0-3-3	2	3	2	0	3	6
at Colorado State	-	19	1-2	1-2	0-0	1-1-2	1	0	3	0	1	3
CSU NORTHBRIDGE	*	30	3-3	2-2	0-0	0-1-1	1	4	2	0	2	8
YALE	*	30	1-3	0-1	2-3	0-4-4	1	2	3	0	3	4
at Tulsa	*	26	3-6	1-4	0-0	1-2-3	3	4	1	0	0	7
MIAMI (OH)	*	32	1-1	1-1	2-2	1-2-3	2	2	2	0	0	5
at Texas	*	23	2-4	1-3	2-3	0-1-1	3	6	2	0	0	7
BAYLOR	*	31	3-6	2-4	3-4	0-1-1	3	4	0	0	2	11
KANSAS STATE	*	26	0-1	0-0	0-0	0-1-1	4	6	2	0	2	0
at Oklahoma State	*	16	0-2	0-1	0-0	0-1-1	0	3	4	0	0	0
at Texas A&M	*	23	0-3	0-3	0-0	0-0-0	2	6	3	0	0	0
NEBRASKA	*	34	2-5	2-5	4-4	2-4-6	1	5	3	0	2	10
at Iowa State	*	24	1-5	1-3	0-0	0-1-1	5	4	1	0	4	3
KANSAS	*	38	2-4	1-3	0-0	0-1-1	4	5	3	0	0	5
MISSOURI	*	36	2-5	2-4	2-2	0-2-2	2	2	3	0	0	8
at Kansas State	*	31	0-0	0-0	0-0	0-0-0	2	3	4	0	0	0
OKLAHOMA	*	28	4-6	2-4	3-4	0-8-8	4	3	2	0	1	13
at Kansas	*	24	0-0	0-0	0-1-1	5	4	1	0	1	0	0
at Missouri	*	17	0-1	0-1	0-0	0-0-0	2	3	2	0	1	0
IOWA STATE	*	32	1-4	0-2	0-0	0-3-3	3	5	1	0	0	2
at Nebraska	*	31	2-4	2-3	0-0	0-2-2	2	6	1	0	1	6
TEXAS TECH	-	19	0-0	0-0	4-4	0-0-0	4	6	1	0	1	4
vs. Texas Tech	*	30	2-4	2-3	0-0	1-3-4	3	3	4	0	0	6

## 2008-09 Game-by-Game (freshman)

Game	GS	Min	FGs	3FGs	FTs	O-D-R	Pf	A	To	BL	ST	Pts
ARK.-PINE BLUFF	*	33	4-5	4-5	0-0	0-4-4	1	3	0	0	0	12
MONTANA STATE	*	38	2-8	0-2	0-2	2-3-5	4	4	3	0	0	4
HARVARD	*	34	1-2	0-1	2-2	0-1-1	3	5	4	0	0	4
LAFAYETTE	*	36	2-5	1-2	5-6	0-4-4	2	3	3	0	2	10
at Stanford	*	35	8-12	1-4	1-2	0-3-3	0	3	3	0	0	18
TCU												did not play
COLORADO STATE	*	36	5-6	1-2	0-1	0-4-4	1	3	2	0	1	11
PRAIRIE VIEW A&M	*	28	2-5	1-2	0-0	0-1-1	0	4	3	0	1	5
La.-MONROE	*	20	1-4	1-3	2-2	1-2-3	4	4	0	0	0	5
vs. Coppin State	*	35	3-4	3-4	0-0	0-3-3	0	6	6	0	1	9
vs. Buffalo	*	38	5-12	0-4	3-3	1-0-1	2	3	2	0	1	13
vs. Vermont	*	34	3-8	1-4	4-4	1-1-2	1	1	1	0	0	11
at SMU	*	34	4-11	2-7	0-1	0-2-2	1	5	3	0	1	10
WESTERN STATE	*	35	3-8	1-3	2-4	1-1-2	4	3	0	0	0	9
at Missouri	*	29	0-1	0-1	2-2	1-1-2	3	3	4	0	0	2
KANSAS	*	33	0-2	0-1	0-0	0-2-2	3	1	7	0	1	0
at Texas Tech	*	37	3-8	3-5	0-0	1-3-4	1	1	2	0	4	9
KANSAS STATE	*	23	2-4	1-2	1-2	0-0-0	5	1	4	0	1	6
IOWA STATE	*	33	3-6	2-4	1-2	3-3-6	1	1	0	0	0	9
at Kansas	*	32	3-4	1-2	0-0	0-0-0	1	2	0	0	0	7
NEBRASKA	*	38	1-3	1-2	2-2	0-1-1	3	1	3	0	0	5
at Oklahoma	*	38	4-6	3-3	0-0	0-4-4	5	4	4	0	0	11
at Iowa State	*	31	1-3	1-2	0-0	0-4-4	0	1	2	0	1	3
TEXAS	*	44	1-5	1-4	2-3	0-1-1	3	5	1	0	0	5
at Nebraska	*	34	2-7	2-5	0-0	1-2-3	3	0	6	0	0	6
MISSOURI	*	23	1-2	1-1	0-0	0-2-2	2	3	4	0	0	3
OKLAHOMA STATE												did not play
at Baylor												did not play
TEXAS A&M	*	34	2-2	0-0	0-0	0-2-2	2	7	1	0	0	4
at Kansas State	*	37	3-6	2-3	2-2	2-3-5	4	4	6	0	2	10
vs. Texas	*	39	2-5	1-4	0-0	0-2-2	2	3	0	1	5	5



# Shannon Sharpe

# #2

**6-1, 200, Fr-RS, PG**  
Corona, Calif. (Centennial)

PTS	REB	AST	ST	MIN	FG%	FT%	3-PT%
2.6	1.3	1.7	0.5	17.3	.433	.600	.125

### 2010-11

- Came off the bench scoring nine points with three assists, one block, one steal against Maryland Eastern Shore
- Made first career three-pointer vs. New Mexico with seven points
- Played 19 minutes in college debut with an assist, block, steal and a point

- Season-best 23 minutes against Longwood (Dec. 19) with two

blocks and five assists

- Season-best six assists vs. Texas-Pan American (Nov. 30)
- First collegiate start at San Francisco (21 mins.); also started vs. Alcorn State & Western New Mexico
- Also started against Alcorn State with three assists

**2009-10 (freshman):** Missed the entire 2009-10 season after suffering a left knee injury during pre-season workouts in October • Successful micro-fracture surgery in November • Returns 100 percent in 2010-11 with four more years playing the point-guard position • One of four freshmen entering the 2009-10 season.

**CORONA CENTENNIAL HS:** As a senior in 2007-08, averaged 17.9 ppg., 7.9 rpg., 7.7 apg., 3.2 spg. • Helped the Huskies to a 27-5 record during his senior season • Tallied four top-five Mountain View League finishes in points (2nd), assists (1st), steals (1st), rebounds (4th) • Recorded five triple-doubles during his senior season • Mountain View League and Triple Crown Tournament most valuable player • Also named to the Inland Empire and Corona all-tournament team • Division 2 All-California Interscholastic Federation (CIF) and All-Riverside County first-team his senior year • Member of 2007 All-California Interscholastic Federation (CIF) championship team • Helped Corona to the 2007 and 2008 Mountain View League Championship • In 2008, AAU team was ranked No. 3 nationally.

**ACADEMICS:** Open Option major in Colorado's College of Arts and Sciences.

**PERSONAL:** Born April 8, 1990 in Riverside, Calif. • Son of the late Jude and Monique Sharpe • Has a younger sister, Shari • Nickname is "duece" • Spent 2008-09 at Laurinburg (N.C.) Institute, but did not play basketball • Lists graduating from high school as his biggest moment of prep career.

### 2010-11 Game-by-Game (freshman)

Game	GS	Min	FGs	3FGs	FTs	O-D-R	Pf	A	To	BL	ST	Pts
<b>IDAHO STATE</b>	-	19	0-0	0-0	1-2	0-0-0	3	1	2	1	1	1
at Georgia	-	12	2-2	0-0	0-1	1-1-2	3	0	2	0	0	4
at San Francisco	*	21	0-0	0-0	0-2	1-0-1	2	1	0	2	0	0
<b>ALCORN STATE</b>	*	17	1-1	0-0	2-2	0-2-2	2	3	0	0	0	4
at Harvard	-	14	1-3	0-0	0-0	2-0-2	1	0	2	0	0	2
<b>TX PAN AMERICAN</b>	-	28	0-3	0-1	0-2	2-2-4	2	6	2	1	2	0
<b>OREGON STATE</b>	-	15	0-1	0-1	0-2	0-1-1	0	1	1	0	1	0
<b>COLORADO STATE</b>	-	11	0-0	0-0	0-0	0-1-1	1	1	0	0	0	0
<b>THE CITADEL</b>	-	14	1-3	0-1	2-2	0-0-0	2	2	0	0	0	4
<b>LONGWOOD</b>	-	23	1-4	0-1	0-0	2-1-3	2	5	0	2	0	3
vs. New Mexico	-	11	3-3	1-1	0-0	0-0-0	0	2	0	0	0	7
vs. Indiana	-	9	0-1	0-1	0-0	0-0-0	0	0	1	0	0	0
<b>MD EASTERN SHORE</b>	-	21	3-4	0-1	3-3	0-2-2	1	3	2	1	1	9
at Cal St. Bakersfield	-	18	0-1	0-0	4-4	0-1-1	0	0	3	0	1	4
<b>WESTERN N. MEXICO</b>	*	27	1-4	0-1	0-0	1-0-1	0	1	2	0	1	2

### Personal Bests

#### Points

Season	9	MD Eastern Shore (Dec. 29, 2010)
Big 12	-	
Career	9	MD Eastern Shore (Dec. 29, 2010)

#### Field Goals

Season	3	twice
Big 12	-	
Career	3	twice

#### Field Goals Attempts

Season	4	three times
Big 12	-	
Career	4	three times

#### 3-Pointers Made

Season	1	New Mexico (Dec. 22, 2010)
Big 12	-	
Career	1	New Mexico (Dec. 22, 2010)

#### 3-Point Attempts

Season	1	seven times
Big 12	-	
Career	1	seven times

#### Free Throws

Season	4	CSU-Bakersfield (Jan. 2, 2011)
Big 12	-	
Career	4	CSU-Bakersfield (Jan. 2, 2011)

#### Free Throw Attempts

Season	3	MD Eastern Shore (Dec. 29, 2010)
Big 12	-	
Career	3	MD Eastern Shore (Dec. 29, 2010)

#### Rebounds

Season	4	TX-Pan American (Nov. 30, 2010)
Big 12	-	
Career	4	TX-Pan American (Nov. 23, 2010)

#### Offensive Rebounds

Season	2	three times
Big 12	-	
Career	2	three times

#### Defensive Rebounds

Season	2	three times
Big 12	-	
Career	2	three times

#### Assists

Season	6	Texas-Pan American (Nov. 30, 2010)
Big 12	-	
Career	6	Texas-Pan American (Nov. 30, 2010)

#### Steals

Season	2	Texas-Pan American (Nov. 30, 2010)
Big 12	-	
Career	2	Texas-Pan American (Nov. 30, 2010)

#### Blocks

Season	2	twice
Big 12	-	
Career	2	twice

#### Minutes

Season	28	Texas-Pan American (Nov. 30, 2010)
Big 12	-	
Career	28	Texas-Pan American (Nov. 30, 2010)



# MARCUS RELPHORDE #5

Senior • Guard • 6-7 • 220 • Chicago, Ill.

PTS REB AST ST MIN FG% FT% 3-PT%  
12.1 4.2 2.4 0.8 27.1 .485 .741 .394

- 13.2 ppg. in his last five games; 24-of-46 FG% (.522); 10 asts., 5 steals
- 12 games over 10 points, including last 11 of 12 games

- Led CU in assists four times (twice shared); rebounding twice (twice shared), once in steals and blocks
- Career-best eight assists in home win over Oregon State
- Has started all 15 games
- Career-best four treys against TX-Pan American
- Season-best 18 points in home vs. Colorado State
- 33 career double-digit scoring games (12 this year)
- 45 consecutive game starts (missed one game due to injury)

## Personal Bests

**Points**  
Season 18 Colorado State (Dec. 8, 2010)  
Big 12 24 at Texas (Jan. 9, 2010)  
Career 24 at Texas (Jan. 9, 2010)

## Field Goals

Season 7 MD Eastern Shore (Dec. 29, 2010)  
Big 12 8 at Texas (Jan. 9, 2010)  
Career 8 at Texas (Jan. 9, 2010)

## Field Goals Attempts

Season 12 Oregon State (Dec. 4, 2010)  
Big 12 15 Kansas (Feb. 3, 2010)  
Career 16 Chaminade (Nov. 25, 2009)

## 3-Pointers Made

Season 4 Texas-Pan American (Nov. 30, 2010)  
Big 12 3 three times  
Career 4 Texas-Pan American (Nov. 30, 2010)

## 3-Point Attempts

Season 5 twice  
Big 12 6 at Texas (Jan. 9, 2010)  
Career 8 Chaminade (Nov. 25, 2009)

## Free Throws

Season 7 Colorado State (Dec. 8, 2010)  
Big 12 6 Kansas State (Jan. 16, 2010)  
Career 7 Colorado State (Dec. 8, 2010)

## Free Throw Attempts

Season 8 Colorado State (Dec. 8, 2010)  
Big 12 9 Kansas State (Jan. 16, 2010)  
Career 9 Kansas State (Jan. 16, 2010)

## Rebounds

Season 7 twice  
Big 12 11 Kansas (Feb. 3, 2010)  
Career 11 Kansas (Feb. 3, 2010)

## Offensive Rebounds

Season 5 Western New Mexico (Jan. 5, 2011)  
Big 12 4 Kansas (Feb. 3, 2010)  
Career 4 Kansas (Feb. 3, 2010)

## Defensive Rebounds

Season 5 four times  
Big 12 10 Oklahoma (Feb. 17, 2010)  
Career 10 Oklahoma (Feb. 17, 2010)

## Assists

Season 8 Oregon State (Dec. 4, 2010)  
Big 12 6 Oklahoma (Feb. 17, 2010)  
Career 8 Oregon State (Dec. 4, 2010)

## Steals

Season 3 The Citadel (Dec. 17, 2010)  
Big 12 3 vs. Texas Tech (Mar. 10, 2010)  
Career 3 four times

## Blocks

Season 3 Western New Mexico (Jan. 5, 2011)  
Big 12 1 twice  
Career 3 Western New Mexico (Jan. 5, 2011)

## Minutes

Season 33 twice  
Big 12 39 Kansas (Feb. 3, 2010)  
Career 39 Kansas (Feb. 3, 2010)

### 2009-10 (Junior Year)

PTS REB AST ST MIN FG% FT% 3-PT%  
11.0 4.1 2.0 1.2 27.0 .411 .684 .343

- pair of double-doubles (Kansas, Oklahoma)
- started 30 games played in, missed one game (at Kansas State tendinitis left knee)
- third in scoring and tied for second with 35 steals • 21 games 10+ points
- led team in scoring three times (1 shared); rebounding seven times (1 shared) ; assists six times (3 shared); team leader in 3-pointers (34) • one 20-point effort (at Texas)
- Co-Big 12 Rookie of the Week (Jan. 11-17): 17.5 ppg, 5.0 rpg., 57.9% (11-of-19, 4-of-7 3pters.)
- Big 12 Commissioners Honor Roll (Fall 2009)

### 2010-11 Game-by-Game (senior)

Game	GS	Min	FGs	3FGs	FTs	O-D-R	Pf	A	To	BL	ST	Pts
IDAHO STATE	* 26	4-8	1-2	3-4	0-1-1	1	3	0	0	2	12	
at Georgia	* 30	2-10	1-5	3-4	2-5-7	1	1	1	0	0	8	
at San Francisco	* 33	1-6	0-1	0-0	0-3-3	3	3	0	0	0	2	
ALCORN STATE	* 23	4-7	2-3	5-5	1-5-6	0	1	3	0	2	15	
at Harvard	* 25	4-9	1-2	3-6	2-2-4	3	0	2	0	0	12	
TX-PAN AMERICAN	* 28	5-8	4-4	2-2	1-4-5	2	2	2	0	2	16	
OREGON STATE	* 31	6-12	0-2	0-0	1-5-6	1	8	4	0	1	12	
COLORADO STATE	* 33	5-9	1-1	7-8	1-3-4	4	3	1	0	0	18	
THE CITADEL	* 23	3-9	1-3	0-0	0-5-5	2	4	2	0	3	7	
LONGWOOD	* 25	5-6	1-1	3-5	2-1-3	1	1	2	0	0	14	
vs. New Mexico	* 28	4-10	1-5	4-7	1-1-2	4	3	3	0	0	13	
vs. Indiana	* 26	6-8	0-0	2-2	2-1-3	4	1	3	0	0	14	
MD EAST. SHORE	* 23	7-9	0-0	1-4	0-3-3	1	3	2	0	0	15	
at Cal St. Bakersfield	* 25	3-7	0-1	5-5	1-3-4	2	2	1	0	0	11	
WESTERN N.MEXICO	* 28	4-12	0-3	5-6	5-2-7	2	1	1	3	2	13	

### 2009-10 Game-by-Game (junior)

Game	GS	Min	FGs	3FGs	FTs	O-D-R	Pf	A	To	BL	ST	Pts	
ARK.-PINE BLUFF	* 18	3-8	0-3	0-0	0-4-4	4	1	3	0	2	6		
COPPIN STATE	* 28	4-10	2-4	4-4	2-4-6	2	4	2	0	1	14		
TEXAS SOUTHERN	* 30	4-9	0-1	3-4	0-2-2	2	4	3	0	2	11		
vs. Gonzaga	* 24	4-7	1-2	1-2	1-1-2	4	2	1	0	1	10		
vs. Arizona	* 17	0-7	0-2	1-2	1-0-1	1	0	0	0	0	1		
at Chaminade	* 28	4-16	2-8	3-4	1-4-5	3	1	2	0	0	13		
SAN FRANCISCO	* 28	4-10	1-3	1-2	0-2-2	2	6	1	2	1	10		
at Oregon State	* 29	3-9	2-4	5-6	1-0-1	2	0	0	0	1	13		
COLO. CHRISTIAN	* 22	3-6	0-1	2-2	0-2-2	3	1	3	0	1	8		
at Colorado State	* 25	2-9	0-5	4-5	0-5-5	5	1	2	0	0	8		
CSU NORTHBRIDGE	* 27	4-6	3-3	2-2	1-3-4	4	4	3	1	3	13		
YALE	* 29	6-11	1-2	2-3	2-4-6	5	1	1	0	3	15		
at Tulsa	* 20	0-5	0-1	0-0	0-1-1	5	1	2	0	0	0		
MIAMI (OH)	* 31	5-7	1-1	3-5	0-3-3	3	1	2	0	2	14		
at Texas	* 27	8-13	3-6	5-5	2-3-5	5	0	4	0	1	24		
BAYLOR	* 34	6-12	2-4	3-6	3-4-7	2	2	0	0	1	17		
KANSAS STATE	* 19	5-7	2-3	6-9	1-2-3	4	2	4	0	1	18		
at Oklahoma State	* 27	2-9	0-4	0-0	0-3-3	1	2	3	0	0	4		
at Texas A&M	* 20	0-6	0-2	0-0	2-3-5	2	1	3	0	2	0		
NEBRASKA	* 29	3-5	1-2	2-3	1-3-4	1	0	2	0	2	9		
at Iowa State	* 30	4-12	1-5	2-4	0-4-4	3	2	1	0	1	11		
KANSAS	* 39	7-15	1-4	3-5	4-7-11	4	1	1	1	0	18		
MISSOURI	* 17	0-5	0-2	2-4	3-2-5	3	3	1	1	1	2		
at Kansas State	did not play (tendinitis left knee)												
OKLAHOMA	* 36	6-13	1-3	0-1	0-10-10	1	6	2	0	2	13		
at Kansas	* 33	7-14	2-4	0-0	1-3-4	1	3	4	0	2	16		
at Missouri	* 24	3-10	1-4	4-4	1-4-5	2	1	3	0	0	11		
IOWA STATE	* 35	4-10	2-4	2-2	1-0-1	4	2	4	0	2	12		
at Nebraska	* 24	3-6	2-3	4-6	0-3-3	4	3	2	1	0	12		
TEXAS TECH	* 32	7-13	3-6	1-5	0-4-4	3	3	2	0	0	18		
vs. Texas Tech	* 29	4-10	0-3	2-3	0-4-4	3	3	4	0	3	10		



# ALEC BURKS #10

Sophomore • Guard • 6-6 • 195 • Grandview, Mo.

PTS	REB	AST	ST	MIN	FG%	FT%	3-PT%
19.1	4.7	2.3	0.9	28.7	.497	.830	.286

- 16 career 20+ point scoring games (8 of 15 games)
- Led team in scoring 21 times (nine times this year)
- 43 career double-digit scoring games
- Burks is 46th on the school's all-time scoring list (798 pts.)
- Did not start against Alcorn State, still recorded his fourth consecutive 20-point effort with 22 points, six rebounds, and 8-of-13 from the field
- First four games of season led CU in scoring
- 36 career games with at least five or more field goals in a game

- Scored a career-high 29 points (11 made FGs, a career-high)
- 2011 Wooden Award Preseason Top 50 Watch list & Top 30 Wooden List announced Jan. 6
- 2011 Naismith Trophy Preseason Top 50 Watch List
- 2011 Bob Cousy Award Watch List
- Preseason Playboy magazine All-America First Team

## 2009-10 (Freshman Year)

PTS	REB	AST	ST	MIN	FG%	FT%	3-PT%
17.1	5.0	1.8	1.2	30.2	.538	.772	.352

- CU's first-ever Big 12 Conference Freshman of the Year
- Set CU freshman record points scored (512); first in Big 12 freshman scoring; 2nd in rebounding (5.0); 2nd in FG% (.538)
- Scored a school freshman record 512 points and became first CU freshman to surpass 500 points.
- Big 12 Conference Freshman of the Year, Big 12 All-Rookie Team, All-Big 12 Honorable Mention, 2009-10 Collegen Insider.com All-America Freshman Team, 2009-10 Basketball Times' All-Freshman first team, CU Sports Performers of the Year: Male Freshman of the Year, Sporting News Magazine All-Freshman second team, 2009-2010 Big 12 specialty teams (Kansas City Star) All-Freshman team.
- led all Big 12 freshmen in scoring, was second in rebounding, and fourth in steals. Burks shot a team-high 52.4 FG percentage against Big 12 opponents and netted eight, 20-plus scoring games.
- Fourth nationally of all freshmen in points per game (17.1) and field goal percentage (53.8).
- Only the second CU freshman to lead team in rebounding (5.0 rpg.) since Matt Bullard (6.4, 1985-86)
- 2nd on the team in scoring with 512 points; 150 boards is sixth highest total by a CU freshman;
- tied for 2nd on the team (with Relphorde) w/ 35 steals
- second in Big 12-only FG% (.524)
- Led all Big 12 freshmen in scoring; second in rebounding; fourth in steals
- double-figures in 29 games (missed KU game, Feb. 3)
- seventh in conference scoring (17.1); eight in Big 12-only games (17.3 ppg.)
- led Big 12 (all games) in FG% with a .538; second in Big 12-only (.524)
- Season-high 27 points against Missouri (Feb. 6), season-high 10 rebounds twice: against Miami (OH) (Jan. 5), against Texas Tech (Mar. 10)
- two double-doubles; 30 starts; 10 or more points in 29 games
- first in FG% (.538); fourth in assists (53); tied for second with 35 steals.
- Scored 20+ points eight times (CU's record in those games was 3-5)
- Against Big 12 opponents, Burks shot a team-high .524 FG percentage
- Led the team in scoring in 12 games
- Led the team in rebounds in 14 games
- 14 games 18+ points, including eight 20+ point efforts
- 23 games with at least five or more FGs
- led in scoring 12 times (three shared); rebounding 14 times (4 shared)
- 20 games this season shooting over 50 percent from the field
- 10 games over 60+ percent

## Personal Bests

### Points

Season	29	at San Francisco (Nov. 20, 2010)
Big 12	27	Missouri (Feb. 6, 2010)
Career	29	at San Francisco (Nov. 20, 2010)

### Field Goals

Season	11	at San Francisco (Nov. 20, 2010)
Big 12	9	Missouri (Feb. 6, 2010)
Career	11	at San Francisco (Nov. 20, 2010)

### Field Goals Attempts

Season	20	at San Francisco (Nov. 20, 2010)
Big 12	19	Missouri (Feb. 6, 2010)
Career	20	at San Francisco (Nov. 20, 2010)

### 3-Pointers Made

Season	2	three times
Big 12	2	twice
Career	2	six times

### 3-Point Attempts

Season	6	at San Francisco (Nov. 20, 2010)
Big 12	6	Nebraska (Jan. 27, 2010)
Career	6	twice

### Free Throws

Season	11	at Georgia (Nov. 16, 2010)
Big 12	9	Nebraska (Jan. 27, 2010)
Career	11	twice

### Free Throw Attempts

Season	15	at Georgia (Nov. 16, 2010)
Big 12	13	Nebraska (Jan. 27, 2010)
Career	15	at Georgia (Nov. 16, 2010)

### Rebounds

Season	8	twice
Big 12	9	Texas Tech (Mar. 6, 2010)
Career	10	Miami (OH) (Jan. 5, 2010)

### Offensive Rebounds

Season	4	CSU-Bakersfield (Jan. 2, 2011)
Big 12	5	at Kansas State (Feb. 13, 2010)
Career	6	at Oregon State (Dec. 4, 2009)

### Defensive Rebounds

Season	4	six times
Big 12	6	Texas Tech (Mar. 6, 2010)
Career	8	Miami (Ohio) (Jan. 5, 2010)

### Assists

Season	5	twice
Big 12	4	twice
Career	5	TX Pan American (Nov. 30, 2010)

### Steals

Season	2	three times
Big 12	3	at Oklahoma St (Jan. 10, 2010)
Career	6	Yale (Dec. 29, 2009)

### Blocks

Season	1	three times
Big 12	1	six times
Career	3	at Tulsa (Jan. 2, 2010)

### Minutes

Season	36	twice
Big 12	39	at Nebraska (Mar. 2, 2010)
Career	39	at Nebraska (Mar. 2, 2010)

## 2010-11 Game-by-Game (sophomore)

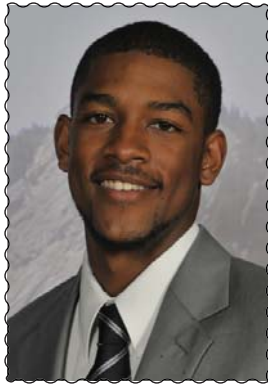
Game	GS	Min	FGs	3FGs	FTs	O-D-R	Pf	A	To	BL	ST	Pts
<b>IDAHO STATE</b>	*	31	5-13	0-1	10-10	0-0-0	3	2	2	0	0	20
at Georgia	*	35	5-14	0-2	11-15	1-4-5	4	3	3	0	1	21
at San Francisco	*	36	11-20	2-6	5-10	2-3-5	1	2	1	0	2	29
<b>ALCORN STATE</b>	-	19	8-13	2-3	4-5	2-4-6	0	2	0	1	1	22
Harvard	*	30	5-12	0-1	10-10	1-4-5	4	1	3	0	0	20
<b>TX-PAN AMERICAN</b>	*	28	4-10	0-1	4-5	3-4-7	2	5	3	0	1	12
<b>OREGON STATE</b>	*	27	7-12	1-4	0-0	0-2-2	3	2	3	0	2	15
<b>COLORADO STATE</b>	*	36	8-16	0-0	9-10	2-3-5	4	1	2	0	2	25
<b>THE CITADEL</b>	*	28	7-8	2-3	3-4	0-3-3	1	1	2	0	1	19
<b>LONGWOOD</b>	*	27	6-13	1-2	2-2	3-4-7	2	5	1	1	1	15
vs. New Mexico	*	35	7-14	0-2	11-13	0-1-1	1	1	2	0	1	25
vs. Indiana	*	18	2-3	0-0	5-7	1-2-3	5	2	3	0	0	9
<b>MD EAST. SHORE</b>	*	27	5-10	0-0	5-5	2-3-5	1	2	1	0	0	15
at Cal St. Bakersfield	*	30	7-14	0-2	5-6	4-4-8	4	4	2	0	1	19
<b>WEST. N. MEXICO</b>	*	24	8-19	0-1	4-4	4-4-8	1	2	2	1	1	20

## 2009-10 Game-by-Game (freshman)

Game	GS	Min	FGs	3FGs	FTs	O-D-R	Pf	A	To	BL	ST	Pts
<b>ARK.-PINE BLUFF</b>	*	29	2-5	0-2	9-13	0-2-2	1	3	0	0	1	13
<b>COPPIN STATE</b>	*	26	6-9	1-2	5-5	0-2-2	3	3	1	2	0	18
<b>TEXAS SOUTHERN</b>	*	31	6-9	1-2	10-13	2-2-4	2	2	0	0	0	23
vs. Gonzaga	*	23	5-6	1-1	0-0	1-5-6	3	0	5	0	0	11
vs. Arizona	*	38	5-12	0-4	9-10	2-2-4	4	1	3	0	2	19
at Chaminade	*	24	4-8	0-0	5-7	1-3-4	1	0	1	0	2	13
<b>SAN FRANCISCO</b>	*	21	5-10	1-3	1-1	1-2-3	3	1	1	0	1	12
at Oregon State	*	36	7-13	0-2	5-7	6-3-9	1	1	3	0	2	19
<b>COLO. CHRISTIAN</b>	*	28	5-8	0-0	1-4	1-5-6	0	4	1	0	0	11
at Colorado State	*	31	9-14	1-1	4-4	1-2-3	3	3	2	0	1	22
<b>CSU NORTHRIDGE</b>	*	28	4-10	0-4	6-6	2-4-6	2	3	4	1	2	14
<b>YALE</b>	*	29	4-10	0-2	11-13	2-1-3	1	3	4	0	6	19
at Tulsa	*	29	7-11	2-3	1-1	4-4-8	4	1	3	3	0	17
<b>MIAMI (OH)</b>	*	36	6-11	1-4	4-6	2-8-10	2	3	0	0	1	17
at Texas	*	33	8-16	0-1	5-6	1-5-6	3	0	2	1	0	21
<b>BAYLOR</b>	*	32	5-11	1-2	5-7	3-3-6	2	2	1	0	1	16
<b>KANSAS STATE</b>	*	35	4-11	0-0	6-7	2-4-6	4	3	3	1	0	14
at Oklahoma State	*	35	8-13	0-1	8-10	2-3-5	1	0	1	1	3	24
at Texas A&M	*	32	8-16	0-0	3-3	2-1-3	3	0	0	0	2	19
<b>NEBRASKA</b>	*	34	5-10	2-6	9-13	1-2-3	2	4	1	0	1	21
at Iowa State	*	2	0-0	0-0	0-0	0-0-0	0	0	0	0	0	0
<b>KANSAS</b>												
			did not play - injured (left knee sprain)									
<b>MISSOURI</b>	*	32	9-19	2-2	7-8	4-2-6	3	1	4	0	1	27
at Kansas State	*	34	7-16	0-1	3-4	5-1-6	4	1	2	0	2	17
<b>OKLAHOMA</b>	*	32	5-6	1-1	6-7	1-2-3	3	2	3	1	1	17
at Kansas	*	31	7-16	0-1	3-4	2-5-7	3	1	2	1	0	17
at Missouri	*	30	5-9	0-0	3-3	1-4-5	4	2	3	1	2	13
<b>IOWA STATE</b>	*	33	3-6	1-3	4-4	1-1-2	2	4	1	0	0	11
at Nebraska	*	39	7-9	1-1	4-6	1-2-3	3	1	1	0	0	19
<b>TEXAS TECH</b>	*	29	8-12	1-1	7-11	3-6-9	4	3	2	0	2	24
vs. Texas Tech	*	37	8-14	2-4	6-10	4-6-10	4	1	4	0	2	24

## 2009-10 Totals

Points .....	27, Missouri (2/6)
FG Made.....	9, twice
FG Attempts .....	19, Missouri (2/6)
3-Pt. Made .....	2, four times
FT Made .....	11, Yale (12/29)
FT Attempts.....	13, three times
Rebounds .....	10, twice
Assists .....	4, three times
Steals.....	6, Yale (12/29)
Blocks.....	3, at Tulsa (1/2)
Minutes .....	39, at Nebraska (3/2)



# CORY HIGGINS #11

Senior • Guard • 6-5 • 180 • Danville, Calif.

PTS	REB	AST	ST	MIN	FG%	FT%	3-PT%
16.6	3.3	2.7	1.3	30.4	.433	.889	.306

- 109 career games played, 108 starts (starts ranks 2nd all-time at CU)
- Last five games: second in team scoring 15.6 ppg.; FT line 21-of-22 at the FT line
- Seventh on the CU scoring list (1,640 pts., 15.1 ppg.)

- Wooden Award Preseason Top 50 list
- All-Big 12 preseason first team selection

- Three 20-point efforts this season (28 career)
- 10 or points in 14 of 15 games
- Has led the team in scoring three times this season (22 vs. Indiana; 21 at Harvard; 18 vs. Longwood)

• Led team in rebounding at USF (27th career)

• Scored seven of his game-high 22 points in the last 2:09 leading CU to a 78-69 win over Indiana at iBN Las Vegas Classic.

• scored seven points in the final two minutes converting a driving layup into a dunk, then added a three-point play with 1:01 remaining in the game increasing CU's lead to eight points. He then added an assist pushing CU's advantage to 10 points. The 22 points was Higgins' third 20-point effort of the season (28th career) and the third time he has led the Buffaloes in scoring in 2010-11 (40th career). Higgins also collected a season-best four steals and was 9-for-9 at the free throw line against the Hoosiers.

## 2009-10 (Junior Year)

PTS	REB	AST	ST	MIN	FG%	FT%	3-PT%
18.9	3.9	2.4	1.9	33.4	.505	.833	.356

- All-Big 12 third team
- Led Big 12 (only) in steals (2.1)
- Scored 587 points, most by any CU player since 1991-92
- was third in Big 12-only FG percentage (.522)
- 45th nationally in points per game
- Shot a career season-best from the field and FT line
- led CU in scoring in five of the last 10 games (20.2 ppg.) and 51.5 percent from the field
- scored in double digits in all but one game (Chaminade, 6 pts.).
- 13th nationally of all juniors last season in steals per game.
- 20th of all juniors in points per game; 24th of all juniors in FG%; t-28th of all juniors in FT%.

## 2008-09 (Sophomore Year)

PTS	REB	AST	ST	MIN	FG%	FT%	3-PT%
17.4	5.4	2.6	1.9	37.0	.476	.830	.360

- All-Big 12 third team
- One of 13 players nationally to rank first or second on their team in five major statistical categories (points, rebounds, assists, steals, blocks)
- Scored 538 points
- under five minutes to play was 81.2 percent at FT line
- Rainbow Classic All-Tournament team
- Led Big 12 (only) in steals (2.1)

## 2007-08 (Freshman Year)

PTS	REB	AST	ST	MIN	FG%	FT%	3-PT%
8.3	3.9	2.3	1.1	33.6	.459	.680	.333

- started all 32 games
- second in assists and steals; third in rebounding
- 266 points scored ranked 10th all-time of freshman scorers

## 2009-10 Totals

Points	.....33, Iowa State (2/27)
FG Made	..... 12, twice
FG Attempts	..... 22, vs. Arizona (11/24)
3-Pt. Made	..... 5, Coppin State (11/16)
FT Made	..... 16, Arkansas-Pine Bluff (11/13)
FT Attempts	16, Arkansas-Pine Bluff (11/13)
Rebounds	.....7, twice
Assists	.....8, Cal State Northridge (12/22)
Steals	.....5, Missouri (2/6)
Blocks	.....2, Kansas State (1/16)
Minutes	.....41, Arizona (11/24)

## Personal Bests

### Points

Season	28	at San Francisco (Nov. 20, 2010)
Big 12	34	Texas (Feb. 14, 2009)
Career	34	Texas (Feb. 14, 2009)

### Field Goals

Season	8	at San Francisco (Nov. 20, 2010)
Big 12	12	twice
Career	12	twice

### Field Goals Attempts

Season	24	at San Francisco (Nov. 20, 2010)
Big 12	20	Texas (Feb. 14, 2009)
Career	24	at San Francisco (Nov. 20, 2010)

### 3-Pointers Made

Season	4	The Citadel (Dec. 17, 2010)
Big 12	3	twice
Career	5	Coppin State (Nov. 16, 2009)

### 3-Point Attempts

Season	6	TX Pan American (Nov. 30, 2010)
Big 12	5	three times
Career	6	Coppin State (Nov. 16, 2009)

### Free Throws

Season	11	Colorado State (Dec. 8, 2010)
Big 12	12	Kansas (Jan. 17, 2009)
Career	16	Ark.-Pine Bluff (Nov. 13, 2009)

### Free Throw Attempts

Season	14	Colorado State (Dec. 8, 2010)
Big 12	12	Kansas (Jan. 17, 2009)
Career	16	Ark.-Pine Bluff (Nov. 13, 2009)

### Rebounds

Season	8	at San Francisco (Nov. 20, 2010)
Big 12	9	Texas (Feb. 14, 2009)
Career	10	twice

### Offensive Rebounds

Season	4	at San Francisco (Nov. 20, 2010)
Big 12	3	three times
Career	4	at San Francisco (Nov. 20, 2010)

### Defensive Rebounds

Season	6	Alcorn State (Nov. 23, 2010)
Big 12	9	Texas (Feb. 14, 2009)
Career	10	twice

### Assists

Season	7	TX Pan American (Nov. 30, 2010)
Big 12	6	at Texas Tech (Jan. 20, 2009)
Career	8	Cal St. Northridge (Dec. 22, 2009)

### Steals

Season	4	ttree times
Big 12	5	three times
Career	5	three times

### Blocks

Season	2	at San Francisco (Nov. 20, 2010)
Big 12	2	Kansas State (Jan. 16, 2010)
Career	2	six times

### Minutes

Season	38	Colorado State (Dec. 8, 2010)
Big 12	46	vs. Baylor (Mar. 13, 2008)
Career	46	vs. Baylor (Mar. 13, 2008)

## 2010-11 Game-by-Game (senior)

Game	GS	Min	FGs	3FGs	FTs	O-D-R	Pf	A	To	BL	ST	Pts
<b>IDAHO STATE</b>	*	33	4-15	1-5	7-10	1-2-3	2	4	0	0	4	16
at Georgia	*	28	4-11	0-2	7-8	3-1-4	5	0	3	0	4	15
at San Francisco	*	37	8-24	2-5	10-11	4-4-8	0	1	3	2	0	28
<b>ALCORN STATE</b>	-	23	7-11	0-0	2-2	0-6-6	2	1	0	0	2	16
at Harvard	*	36	6-14	1-2	8-8	2-1-3	3	1	5	0	1	21
<b>TX-PAN AMERICAN</b>	*	29	6-10	3-6	0-0	0-1-1	0	7	0	1	1	15
<b>OREGON STATE</b>	*	29	2-6	1-4	4-4	0-4-4	2	6	2	1	0	9
<b>COLORADO STATE</b>	*	38	2-10	0-2	11-14	0-4-4	3	3	1	0	1	15
<b>THE CITADEL</b>	*	31	7-13	4-6	0-0	0-1-1	1	5	0	0	0	18
<b>LONGWOOD</b>	*	18	7-12	2-2	2-2	1-1-2	1	2	1	0	2	18
vs. New Mexico	*	33	4-13	0-4	2-2	1-2-3	4	0	2	1	0	10
vs. Indiana	*	37	6-14	1-3	9-9	1-3-4	2	1	1	0	4	22
<b>MD EASTERN SHORE</b>	*	28	5-8	0-2	5-5	0-1-1	1	2	0	0	0	15
at Cal St. Bakersfield	*	28	7-14	0-3	2-2	0-1-1	0	3	1	1	1	16
<b>WESTERN N.MEXICO</b>	*	22	6-12	0-3	3-4	2-2-4	3	4	3	0	0	15

## 2009-10 Game-by-Game (junior)

Game	GS	Min	FGs	3FGs	FTs	O-D-R	Pf	A	To	BL	ST	Pts
<b>ARK.-PINE BLUFF</b>	*	33	5-8	0-1	16-16	1-1-2	2	2	1	0	1	26
<b>COPPIN STATE</b>	*	30	7-10	5-6	2-2	0-2-2	1	3	1	0	3	21
<b>TEXAS SOUTHERN</b>	*	33	9-12	1-2	4-6	1-5-6	3	2	4	0	1	23
vs. Gonzaga	*	35	7-16	1-4	4-5	0-6-6	4	3	2	1	3	19
vs. Arizona	*	41	10-22	1-3	7-7	1-3-4	3	2	2	0	0	28
at Chaminade	*	29	2-4	2-3	0-0	0-4-4	3	4	3	1	0	6
<b>SAN FRANCISCO</b>	*	30	9-12	2-2	0-3-3	2	1	1	0	3	22	
at Oregon State	*	39	5-12	1-3	4-4	1-2-3	1	3	2	1	1	15
<b>COLO. CHRISTIAN</b>	*	25	7-11	1-1	10-13	0-1-1	2	1	1	0	1	25
at Colorado State	*	33	1-10	0-4	10-11	0-3-3	4	3	4	0	2	12
<b>CSU NORTHBRIDGE</b>	*	28	5-11	1-5	3-3	0-3-3	2	8	0	0	2	14
<b>YALE</b>	*	35	8-15	2-5	5-9	1-3-4	3	3	3	1	3	23
at Tulsa	*	34	3-12	0-3	7-7	2-3-5	3	2	2	0	1	13
<b>MIAMI (OH)</b>	*	28	4-11	1-3	2-3	0-2-2	3	2	4	1	2	11
at Texas	*	33	6-10	0-1	3-4	0-2-2	1	2	2	0	1	15
<b>BAYLOR</b>	*	31	6-11	0-2	6-8	1-3-4	4	3	2	0	2	18
<b>KANSAS STATE</b>	*	38	12-18	0-5	6-10	1-5-6	3	1	5	2	1	30
at Oklahoma State	*	35	3-10	1-3	6-7	2-2-4	3	2	1	0	3	13
at Texas A&M	*	35	6-11	0-1	7-8	0-3-3	2	0	2	0	4	19
<b>NEBRASKA</b>	*	32	4-9	0-2	3-3	0-6-6	3	1	3	1	3	11
at Iowa State	*	34	7-17	1-2	6-8	0-1-1	3	3	1	0	2	21
<b>KANSAS</b>	*	38	4-15	0-3	6-6	3-4-7	3	3	3	0	0	14
<b>MISSOURI</b>	*	31	5-11	0-2	5-7	3-4-7	5	3	2	0	5	15
at Kansas State	*	38	6-15	3-4	6-6	1-3-4	0	1	6	0	4	21
<b>OKLAHOMA</b>	*	33	7-17	1-4	3-3	0-4-4	3	3	0	0	1	18
at Kansas	*	24	3-7	1-2	6-7	0-2-2	2	0	3	1	1	13
at Missouri	*	34	9-14	2-5	1-2	2-1-3	0	2	4	0	0	21
<b>IOWA STATE</b>	*	39	12-15	3-4	6-6	0-6-6	0	4	0	1	1	33
at Nebraska	*	36	6-11	0-1	7-9	0-6-6	4	4	4	1	4	19
<b>TEXAS TECH</b>	*	33	9-10	1-1	11-15	0-3-3	4	1	2	0	2	30
vs. Texas Tech	*	39	6-15	1-3	5-6	0-4-4	1	1	2	0	3	18

## 2008-09 Game-by-Game (sophomore)

Game	GS	Min	FGs	3FGs	FTs	O-D-R	Pf	A	To	BL	ST	Pts
<b>ARK.-PINE BLUFF</b>	*	36	4-10	1-4	3-6	0-6-6	1	6	3	0	1	12
<b>MONTANA STATE</b>	*	44	5-8	0-3	11-14	2-5-7	2	5	4	0	4	21
<b>HARVARD</b>	*	36	3-7	0-3	8-11	1-8-9	2	3	2	0	1	14
<b>LAFAYETTE</b>	*	31	7-11	2-3	8-10	0-2-2	3	1	2	0	3	24
at Stanford	*	36	4-12	0-2	1-4	1-3-4	4	1	5	0	0	9
<b>TCU</b>	*	38	4-10	1-3	7-8	1-7-8	2	1	2	0	0	16
<b>COLORADO STATE</b>	*	38	11-16	3-5	8-9	1-5-6	0	3	1	1	3	33
<b>PRAIRIE VIEW A&amp;M</b>	*	30	6-12	3-5	2-2	0-8-8	3	2	3	2	0	17
<b>La.-MONROE</b>	*	40	4-8	0-2	7-7	2-5-7	3	3	3	2	4	15
vs. Coppin State	*	36	4-5	1-2	12-12	0-10-10	3	4	3	1	1	21
vs. Buffalo	*	15	5-11	1-2	4-4	0-3-3	2	2	1	1	2	15
vs. Vermont	*	34	6-10	2-2	4-4	0-5-5	5	2	4	0	0	18
at SMU	*	39	3-7	1-3	4-4	0-6-6	5	6	3	0	4	11
<b>WESTERN STATE</b>	*	38	9-14	1-3	5-5	0-10-10	0	1	1	0	0	24
at Missouri	*	29	3-9	0-0	6-7	2-2-4	3	2	4	0	5	12
<b>KANSAS</b>	*	40	3-8	2-4	12-12	0-3-3	1	1	2	1	2	20
at Texas Tech	*	38	7-13	0-2	7-8	2-5-7	2	6	3	0	3	21
<b>KANSAS STATE</b>	*	45	3-6	0-1	6-7	0-5-5	2	3	5	0	4	12
<b>IOWA STATE</b>	*	38	6-14	2-4	5-5	0-3-3	0	2	3	0	3	19
at Kansas	*	38	6-16	0-3	3-5	1-4-5	4	5	1	0	4	15
<b>NEBRASKA</b>	*	39	6-12	1-3	2-2	1-5-6	3	4	4	1	2	15
at Oklahoma	*	36	9-18	2-4	0-0	1-2-3	3	0	2	0	2	20
at Iowa State	*	34	2-5	0-1	7-8	1-2-3	4	1	4	0	0	11
<b>TEXAS</b>	*	43	11-20	3-5	9-11	0-9-9	2	1	4	0	0	34
at Nebraska	*	35	3-9	1-5	5-5	0-6-6	1	1	3	0	0	12
<b>MISSOURI</b>	*	39	5-12	0-0	4-8	0-4-4	2	3	3	1	3	14
<b>OKLAHOMA STATE</b>	*	33	3-8	0-0	3-5	1-2-3	1	1	1	0	0	9
at Baylor	*	38	5-11	3-5	7-9	0-5-5	4	1	3	1	2	20
<b>TEXAS A&amp;M</b>	*	27	10-18	2-4	5-8	0-6-6	3	4	1	0	3	27
at Kansas State	*	39	7-16	0-1	8-8	1-2-3	4	3	6	0	0	22
vs. Texas	*	32	1-11	0-5	3-4	0-1-1	2	2	1	0	3	5

## 2007-08 Game-by-Game (freshman)

Game	GS	Min	FGs	3FGs	FTs	O-D-R	Pf	A	To	BL	ST	Pts
<b>NEW MEXICO</b>	*	37	3-7	1-3	3-4	0-5-5	3	2	1	1	3	10
vs. Florida A&M	*	31	3-5	2-4	2-2	0-2-2	3	1	2	0	0	10
vs. Savannah State	*	19	1-3	0-2	1-2	0-1-1	3	0	4	0	1	3
at Wisconsin	*	33	1-4	0-1	0-0	0-3-3	0	1	1	1	3	2
<b>COLO. CHRISTIAN</b>	*	25	3-7	0-2	0-0	0-4-4	2	1	2	0	1	6
at Denver	*	29	1-3	0-0	4-4	1-3-4	0	2	3	0	1	6
at Air Force	*	32	3-7	0-2	1-3	1-2-3	3	5	2	0	0	7
<b>STANFORD</b>	*	34	4-7	2-4	0-0	0-6-6	2	0	3	1	0	10
at Wyoming	*	20	3-8	1-3	0-0	0-5-5	4	2	2	0	1	7
<b>NEW ORLEANS</b>	*	31	4-7	2-2	0-0	1-4-5	0	2	1	1	1	10
at Colorado State	*	34	5-7	1-2	2-4	0-3-3	2	7	4	1	2	13
<b>GRAMBLING STATE</b>	*	28	7-11	1-1	0-0	1-3-4	1	6	2	2	3	15
<b>SMU</b>	*	36	2-5	0-3	0-1	0-5-5	1	1	0	1	1	4
<b>TULSA</b>	*	36	1-6	0-3	0-1	0-1-1	2	3	0	0	0	2
at Texas A&M	*	37	6-10	2-4	1-2	1-4-5	3	3	0	0	1	15
<b>NEBRASKA</b>	*	35	5-10	2-4	1-2	2-4-6	1	1	1	0	0	13
at Texas	*	33	2-4	2-4	2-2	0-8-8	3	3	2	0	1	8
<b>KANSAS STATE</b>	*	34	3-6	2-3	2-4	2-2-4	1	1	4	1	1	10
<b>MISSOURI</b>	*	38	1-3	0-1	5-6	2-3-5	1	3	3	0	3	7
at Iowa State	*	33	1-8	0-4	2-2	1-1-2	4	1	3	0	5	4
<b>KANSAS</b>	*	39	5-10	1-2	0-0	1-1-2	3	3	1	0	1	11
at Oklahoma State	*	38	2-5	1-3	6-7	1-3-4	4	2	1	0	1	11
<b>OKLAHOMA</b>	*	39	2-5	1-1	4-4	0-7-7	2	4	1	0	1	9
at Kansas	*	35	3-6	1-2	2-2	1-4-5	2	3	4	0	1	9
<b>TEXAS TECH</b>	*	37	4-7	1-4	3-3	0-2-2	3	1	3	1	1	12



# JAVON CONEY

# #14

Senior • Guard • 6-3 • 210 • Chicago, Ill.

## 2010-11

**PTS**   **REB**   **AST**   **ST**   **MIN**   **FG%**   **FT%**   **3-PT%**  
**0.9**   **0.7**   **0.1**   **0.1**   **5.5**   **.444**   **.667**   **.000**

- 11 games played; season-best 11 minutes vs. Western NM
- Four points against Longwood; Two vs. MD Eastern Shore
- Block shot and season-best two rebounds vs. The Citadel
- Played 23 games a year ago, one start (Oklahoma State)
- Non-scholarship student-athlete (played all four years)

## Personal Bests

### Points

Season   4   Longwood (Dec. 19, 2010)  
 Big 12   15   at Nebraska (March 9, 2008)  
 Career   15   at Nebraska (March 9, 2008)

### Field Goals

Season   2   Longwood (Dec. 19, 2010)  
 Big 12   4   at Nebraska (March 9, 2008)  
 Career   4   at Nebraska (March 9, 2008)

### Field Goal Attempts

Season   4   Longwood (Dec. 19, 2010)  
 Big 12   5   twice  
 Career   5   twice

### 3-Pointers Made

Season   -  
 Big 12   3   at Nebraska (March 9, 2008)  
 Career   3   at Nebraska (March 9, 2008)

### 3-Point Field Goal Attempts

Season   1   twice  
 Big 12   4   Missouri (Feb. 21, 2009)  
 Career   4   Missouri (Feb. 21, 2009)

### Free Throws

Season   -  
 Big 12   4   at Nebraska (March 9, 2008)  
 Career   4   at Nebraska (March 9, 2008)

### Free Throw Attempts

Season   1   Alcorn State (Nov. 23, 2010)  
 Big 12   4   at Nebraska (March 9, 2008)  
 Career   4   at Nebraska (March 9, 2008)

### Rebounds

Season   3   W. New Mexico (Jan. 5, 2011)  
 Big 12   6   Oklahoma State (Feb. 25, 2009)  
 Career   6   Oklahoma State (Feb. 25, 2009)

### Offensive Rebounds

Season   1   W. New Mexico (Jan. 5, 2011)  
 Big 12   3   at Nebraska (March 9, 2008)  
 Career   3   at Nebraska (March 9, 2008)

### Defensive Rebounds

Season   2   three times  
 Big 12   5   at Nebraska (March 9, 2008)  
 Career   5   at Nebraska (March 9, 2008)

### Assists

Season   1   W. New Mexico (Jan. 5, 2011)  
 Big 12   3   Kansas State (Jan. 24, 2009)  
 Career   3   Kansas State (Jan. 24, 2009)

### Steals

Season   1   Indiana (Nov. 23, 2010)  
 Big 12   2   at Nebraska (March 9, 2008)  
 Career   2   at Nebraska (March 9, 2008)

### Blocks

Season   1   The Citadel (Dec. 17, 2010)  
 Big 12   1   Oklahoma State (Feb. 25, 2009)  
 Career   1   Oklahoma State (Feb. 25, 2009)

### Minutes

Season   11   W. New Mexico (Jan. 5, 2011)  
 Big 12   27   twice  
 Career   27   twice

## 2009-10 Game-by-Game (senior)

Game	GS	Min	FGs	3FGs	FTs	O-D-R	Pf	A	To	BL	ST	Pts
IDAHO STATE	-	1	0-0	0-0	0-0	0-0-0	0	0	0	0	0	0
at Georgia			did not play									
at San Francisco	-	3	0-0	0-0	0-0	0-0-0	0	0	0	0	0	0
ALCORN STATE	-	9	0-0	0-0	0-1	0-0-0	0	0	1	0	0	0
at Harvard			did not play									
TX-PAN AMERICAN	-	9	1-1	0-0	0-0	0-2-2	2	0	1	0	0	2
OREGON STATE	-	3	0-0	0-0	0-0	0-0-0	0	0	0	0	0	0
COLORADO STATE			did not play									
THE CITADEL	-	7	1-1	0-0	0-0	0-2-2	0	0	0	1	0	2
LONGWOOD	-	8	2-4	0-1	0-0	0-0-0	0	0	0	0	0	4
vs. New Mexico			did not play									
vs. Indiana	-	3	0-0	0-0	0-0	0-0-0	0	0	0	0	1	0
MD EAST. SHORE	-	6	0-1	0-0	2-2	0-1-1	1	0	0	0	0	2
at Cal St. Bakersfield	-	1	0-0	0-0	0-0	0-0-0	0	0	0	0	0	0
W. NEW MEXICO	-	11	0-2	0-1	0-0	1-2-3	0	1	0	0	0	0

## 2009-10 Game-by-Game (junior)

Game	GS	Min	FGs	3FGs	FTs	O-D-R	Pf	A	To	BL	ST	Pts
ARK.-PINE BLUFF	-	1	0-0	0-0	0-0	0-0-0	0	0	0	0	0	0
COPPIN STATE	-	1	0-0	0-0	0-0	0-0-0	1	0	0	0	0	0
SAN FRANCISCO	-	3	0-0	0-0	0-0	0-0-0	0	0	0	0	0	0
CSU NORTHRIDGE	-	3	0-0	0-0	0-0	1-1-2	2	0	0	0	0	0
at Tulsa	-	1	0-0	0-0	0-0	0-0-0	0	0	0	0	0	0
at Missouri	-	3	0-1	0-0	0-0	2-0-2	0	0	0	0	0	0
TEXAS TECH	-	0+	0-0	0-0	0-0	0-0-0	0	0	0	0	0	0

## 2008-09 Game-by-Game (sophomore)

Game	GS	Min	FGs	3FGs	FTs	O-D-R	Pf	A	To	BL	ST	Pts
ARK.-PINE BLUFF	-	8	0-0	0-0	0-0	0-0-0	0	0	0	0	0	0
LAFAYETTE	-	11	0-2	0-1	0-0	0-0-0	1	1	1	0	0	0
at Stanford	-	2	0-0	0-0	0-0	0-1-1	0	0	1	0	0	0
TCU	-	21	1-4	0-1	0-0	1-0-1	3	0	1	0	0	2
COLORADO STATE	-	1	0-0	0-0	0-0	0-0-0	0	0	0	0	0	0
PRAIRIE VIEW A&M	-	6	0-1	0-1	0-0	1-3-4	1	1	0	0	0	0
vs. Coppin State	-	1	1-1	0-0	0-0	0-0-0	0	0	0	0	0	2
vs. Vermont	-	9	0-3	0-3	0-0	0-0-0	0	2	0	0	1	0
WESTERN STATE	-	5	0-1	0-0	0-0	2-0-2	0	0	1	0	0	0
at Missouri	-	9	1-1	0-0	0-2	0-2-2	3	1	0	0	0	2
KANSAS STATE	-	27	1-3	1-2	1-2	1-3-4	2	3	0	0	0	4
IOWA STATE	-	9	0-1	0-1	0-0	0-1-1	2	0	0	0	0	0
at Kansas	-	2	0-1	0-1	0-0	0-0-0	0	0	0	0	0	0
NEBRASKA	-	2	0-1	0-1	0-0	0-0-0	2	0	0	0	0	0
at Oklahoma	-	12	0-1	0-0	0-0	0-2-2	1	1	0	0	0	0
at Iowa State	-	3	0-0	0-0	0-0	0-0-0	1	0	1	0	0	0
TEXAS	-	3	0-0	0-0	0-0	0-0-0	0	0	0	0	0	0
at Nebraska	-	18	1-4	1-3	0-0	0-5-5	2	0	1	0	0	3
MISSOURI	-	23	2-5	1-4	0-1	1-2-3	3	1	2	0	1	5
OKLAHOMA STATE	-	27	0-1	0-0	0-0	1-5-6	2	0	0	1	0	0
TEXAS A&M	-	1	0-0	0-0	0-0	0-0-0	0	0	0	0	1	0
at Kansas State	-	2	0-0	0-0	0-0	0-0-0	0	0	0	0	0	0

## 2007-08 Game-by-Game (freshman)

Game	GS	Min	FGs	3FGs	FTs	O-D-R	Pf	A	To	BL	ST	Pts
vs. Florida A&M	-	1	0-0	0-0	0-0	0-0-0	0	0	0	0	0	0
at Wisconsin	-	3	0-0	0-0	0-0	0-0-0	0	0	0	0	0	0
COLO. CHRISTIAN	-	1	0-0	0-0	0-0	0-0-0	0	0	0	0	0	0
GRAMBLING STATE	-	9	1-2	0-1	0-0	0-1-1	0	0	0	0	0	2
at Iowa State	-	1	0-0	0-0	0-0	0-0-0	0	0	0	0	0	0
KANSAS	-	2	0-2	0-2	0-0	0-0-0	0	0	0	0	0	0
at Kansas	-	5	0-1	0-1	0-0	0-0-0	0	0	0	0	0	0
TEXAS TECH	-	4	0-1	0-1	0-0	0-0-0	0	0	0	0	0	0
at Missouri	-	5	0-0	0-0	0-0	0-0-0	1	0	0	0	0	0
BAYLOR	-	3	0-0	0-0	0-0	0-0-0	1	0	0	0	0	0
at Kansas State	-	0	0-0	0-0	0-0	0-0-0	1	0	0	0	0	0



## André Roberson #21

6-7, 190, Fr., G  
San Antonio, Texas (Wagner HS)

### 2010-11

PTS	REB	AST	ST	BLK	MIN	FG%	FT%	3-PT%
6.7	7.7	0.7	1.7	1.3	20.3	.577	.565	.313

- Leads team in steals (26)
- Grabbed at least six rebounds in 10 of 15 games
- Five games with at least 10 or more rebounds
- Season-best three blocks vs. MD Eastern Shore
- Back-to-back double-doubles vs. The Citadel (11 pts., 10

rebs); and against Longwood (14 pts., 13 rebs.); double-double vs. Western NM with 12 points, 12 rebounds.

- Led CU in rebounding 11 times (three shared), blocked shots seven times (twice shared), and steals six times (twice shared)
- Has shot 50 percent or better from the field in the last six of seven games
- Grabbed 11 rebounds and scored six points in collegiate debut.
- Second most rebounds (11) in college debut ranking second to Jermyl Jackson-Wilson (17 rebounds, 2006).
- First student-athlete signed with Coach Boyle staff.

**Academics:** Open Option major in Colorado's College of Arts and Sciences.

### WAGNER HIGH SCHOOL

- Averaged 15 points, 12 rebounds, 1.7 blocked shots per game during his season year.
- Led team in rebounding and blocks senior year.
- Helped lead the Thunderbirds to a pair of consecutive Texas Class 5-A state semifinal appearances.
- Member of two region championship teams.
- Helped Wagner to a 39-2 record during senior year and a No. 22 national ranking, in addition to No. 4 state ranking and No. 1 in the section.
- Two-time first-team all-state selection.
- District 27-5A Most Valuable Player.
- Named to the All-Area Class 5-A Super Team.
- Junior year averaged 9.3 points and 9.1 rebounds per game.
- Comes from an athletic family, father John Roberson played basketball collegiately at New Mexico State (1985-89) and professionally overseas for 12 years; his mother, Lisa played volleyball at New Mexico State (1985-89).
- Older sisters have Big 12 Conference ties; Ashlee averaged 12.2 ppg. and was 2009-10 All-Big 12 honorable mention as a senior last year at Texas Tech; Amber, is a junior at the University of Texas, a two-year volleyball letterwinner.

### 2010-11 Game-by-Game

Game	GS	Min	FGs	3FGs	FTs	O-D-R	Pf	A	To	BL	ST	Pts
<b>IDAHO STATE</b>	-	21	3-5	0-0	0-0	4-7-11	2	1	0	0	1	6
at Georgia	-	16	0-1	0-1	1-2	1-6-7	4	3	1	1	0	1
at San Francisco	-	23	2-2	0-0	0-0	2-3-5	2	1	2	2	3	4
<b>ALCORN STATE</b>	-	21	2-5	0-1	0-0	3-6-9	4	4	2	2	2	4
at Harvard	-	19	1-2	0-1	1-2	2-2-4	1	0	1	0	2	3
<b>TX-PAN AMERICAN</b>	-	21	3-6	0-0	2-2	3-3-6	2	0	4	2	3	8
<b>OREGON STATE</b>	-	17	4-5	0-1	1-1	2-4-6	5	0	0	2	2	9
<b>COLORADO STATE</b>	-	12	1-3	0-0	0-0	3-2-5	2	0	2	1	0	5
<b>THE CITADEL</b>	-	21	4-8	1-2	2-5	1-9-10	2	1	1	2	2	11
<b>LONGWOOD</b>	-	21	5-9	2-3	2-3	4-9-13	1	0	1	1	0	13
vs. New Mexico	-	26	3-5	1-3	0-0	4-4-8	3	0	3	1	2	7
vs. Indiana	-	14	2-3	1-1	3-3	0-1-1	5	0	1	0	2	8
<b>MD EASTERN SHORE</b>	-	20	2-5	0-1	0-2	2-6-8	2	1	0	3	2	4
at Cal St. Bakersfield	-	25	3-5	0-1	1-2	1-9-10	1	0	2	0	2	7
<b>WESTERN N.MEXICO</b>	-	27	6-7	0-1	0-1	3-9-12	2	0	0	2	3	12

### Personal Bests

Points	Season	14	Longwood (Dec. 19, 2010)
Big 12	-		
Career	14	Longwood (Dec. 19, 2010)	

### Field Goals

Season	6	Western New Mexico (Jan. 5, 2011)
Big 12	-	
Career	6	Western New Mexico (Jan. 5, 2011)

### Field Goal Attempts

Season	9	Longwood (Dec. 19, 2010)
Big 12	-	
Career	9	Longwood (Dec. 19, 2010)

### 3-Pointers Made

Season	2	Longwood (Dec. 19, 2010)
Big 12	-	
Career	2	Longwood (Dec. 19, 2010)

### 3-Point Field Goal Attempts

Season	3	twice
Big 12	-	
Career	3	twice

### Free Throws

Season	3	Indiana (Dec. 23, 2010)
Big 12	-	
Career	3	Indiana (Dec. 23, 2010)

### Free Throw Attempts

Season	5	The Citadel (Dec. 17, 2010)
Big 12	-	
Career	5	The Citadel (Dec. 17, 2010)

### Rebounds

Season	13	Longwood (Dec. 19, 2010)
Big 12	-	
Career	13	Longwood (Dec. 19, 2010)

### Offensive Rebounds

Season	4	three times
Big 12	-	
Career	4	three times

### Defensive Rebounds

Season	9	three times
Big 12	-	
Career	9	three times

### Assists

Season	4	Alcorn State (Nov. 23, 2010)
Big 12	-	
Career	4	Alcorn State (Nov. 23, 2010)

### Steals

Season	3	three times
Big 12	-	
Career	3	three times

### Blocks

Season	3	MD-Eastern Shore (Dec. 29, 2010)
Big 12	-	
Career	3	MD-Eastern Shore (Dec. 29, 2010)

### Minutes

Season	27	Western New Mexico (Jan. 5, 2011)
Big 12	-	
Career	27	Western New Mexico (Jan. 5, 2011)



# LEVI KNUTSON #24

Senior • Guard • 6-4 • 200 • Littleton, Colo.

PTS	REB	AST	ST	MIN	FG%	FT%	3-PT%
11.4	3.1	1.1	0.7	23.7	.583	.893	.500

- made a key steal with 40 seconds remaining in the win vs. Indiana
- Leads team with 26 three-pointers.
- Did not miss a shot versus Longwood (see next page)
- Last 10 games: 13.1 ppg., 66.7 percent (44-of-66 FG); 21-of-22 at the free throw line; leads team with 22 three-pointers
- Made 4-of-4 free throws in overtime helping CU defeat Colorado State (7-of-7 for the game). Tied career-best with seven FTs made.
- 11 games over 10 points including the last nine of 10 games.

• Scored a career-best 22 points (game-high) along with a personal best six 3-pointers in home win over Oregon State. The six-3-pointers by one player is the most since Richard Roby made six against Nebraska (Jan. 25, 2006).

- Eight FGs made ties a career-high; started against Oregon State.
- Scored 18 points on 7-of-10 shooting in home win versus Texas-Pan American
- Came of the bench to score 16 points on 6-of-7 shooting against Idaho State.

ACADEMICS: College major is finance • CU Scholar-Athlete Award for highest Junior GPA in 2009-2010 (3.929)  
 • Named to the 2009-10 and 2008-09 All-Big 12 Academic first team • Achieved a perfect 4.0 GPA in the Fall 2009 and Spring 2009 semesters • Seven-time Dean's List honoree • Five-time Commissioners Honor Roll.

## 2009-10 (Junior Year)

PTS	REB	AST	ST	MIN	FG%	FT%	3-PT%
3.5	1.6	0.7	0.5	12.7	.390	.781	.357

- 13 pts., 5-of-8 shooting vs. KU (Feb. 3), three treys & 34 mins.
- 11 points in home win over Texas Tech (3/6); 7-of-8 FTs
- five games over 20 minutes played
- 23 games played
- CU scholar-athlete, highest junior GPA (3.929)
- Big 12 Commissioners Honor Roll (Fall 2009, Spring 2010)
- Academic All-Big 12 First Team

## 2008-09 (Sophomore Year)

PTS	REB	AST	ST	MIN	FG%	FT%	3-PT%
3.8	1.7	1.0	0.4	15.9	.393	.842	.229

- played 30 games with one start
- career-high 19 points vs. Oklahoma State (8-of-13)
- started at Baylor (seven points, three rebounds, two assists)

## 2007-08 (Freshman Year)

PTS	REB	AST	ST	MIN	FG%	FT%	3-PT%
4.6	1.3	1.2	0.2	18.3	.415	.786	.333

- played 32 games with one start
- lone start, nine points, three rebounds vs. Colo. Christian
- doubles figures six times

## 2009-10 Totals

Points	13, Kansas (2/3)
FG Made	5, Kansas (2/3)
3-Pt. Made	3, Kansas (2/3)
FT Made	7, Texas Tech (3/6)
Rebounds	6, at Iowa State (1/30)
Assists	3, at Iowa State (1/30)
Steals	2, three times
Blocks	1, Texas Tech (3/6)
Minutes	34, Kansas (2/3)

## Personal Bests

### Points

Season	22	Oregon State (Dec. 4, 2010)
Big 12	19	Oklahoma State (Feb. 25, 2009)
Career	22	Oregon State (Dec. 4, 2010)

### Field Goals

Season	8	Oregon State (Dec. 4, 2010)
Big 12	8	Oklahoma State (Feb. 25, 2009)
Career	8	twice

### Field Goals Attempts

Season	11	twice
Big 12	13	Oklahoma State (Feb. 25, 2009)
Career	13	Oklahoma State (Feb. 25, 2009)

### 3-Pointers Made

Season	6	Oregon State (Dec. 4, 2010)
Big 12	3	twice
Career	6	Oregon State (Dec. 4, 2010)

### 3-Point Attempts

Season	8	Oregon State (Dec. 4, 2010)
Big 12	5	four times
Career	8	twice

### Free Throws

Season	7	Colorado State (Dec. 8, 2010)
Big 12	7	Texas Tech (Mar. 6, 2010)
Career	7	twice

### Free Throw Attempts

Season	7	Colorado State (Dec. 8, 2010)
Big 12	8	Texas Tech (Mar. 6, 2010)
Career	8	Texas Tech (Mar. 6, 2010)

### Rebounds

Season	5	twice
Big 12	6	three times
Career	6	three times

### Offensive Rebounds

Season	3	TX-Pan American (Nov. 30, 2010)
Big 12	3	vs. Texas (Mar. 11, 2009)
Career	3	twice

### Defensive Rebounds

Season	5	Indiana (Dec. 23, 2010)
Big 12	6	Nebraska (Feb. 4, 2009)
Career	6	Nebraska (Feb. 4, 2009)

### Assists

Season	3	Alcorn State (Nov. 23, 2010)
Big 12	4	Oklahoma State (Feb. 25, 2009)
Career	4	twice

### Steals

Season	2	three times
Big 12	2	three times
Career	2	eight times

### Blocks

Season	-	
Big 12	1	Texas Tech (Mar. 6, 2010)
Career	1	twice

### Minutes

Season	31	Oregon State (Dec. 4, 2010)
Big 12	36	twice
Career	36	twice

## 2010-11 Game-by-Game (senior)

Game	GS	Min	FGs	3FGs	FTs	O-D-R	Pf	A	To	BL	ST	Pts
IDAHO STATE	-	20	6-7	1-1	3-3	1-4-5	3	2	0	0	0	16
at Georgia	-	12	2-4	1-3	0-0	1-2-3	3	0	2	0	0	5
at San Francisco	-	20	5-11	1-5	0-1	0-3-3	4	0	1	0	1	11
ALCORN STATE	*	26	3-11	1-5	0-0	0-4-4	2	3	0	0	0	7
at Harvard	-	23	0-4	0-3	1-2	1-1-2	1	1	2	0	0	1
TX-PAN AMERICAN	-	24	7-10	2-3	2-2	3-0-3	0	2	1	0	1	18
OREGON STATE	*	31	8-10	6-8	0-0	2-2-4	0	0	0	0	0	22
COLORADO STATE	-	28	3-4	1-1	7-7	0-3-3	1	1	0	0	0	14
THE CITADEL	-	22	5-6	1-2	0-0	1-1-2	1	1	2	0	0	11
LONGWOOD	-	19	5-5	3-3	4-4	0-4-4	0	2	0	0	2	17
vs. New Mexico	-	30	4-8	2-4	0-0	1-1-2	4	0	1	0	2	10
vs. Indiana	-	28	2-4	0-1	6-6	0-5-5	0	1	1	0	1	10
MD EASTERN SHORE	-	25	2-5	2-4	0-1	1-0-1	1	2	1	0	2	6
at Cal St. Bakersfield	-	23	4-8	2-5	0-0	0-2-2	3	1	0	0	1	10
WESTERN N.MEXICO	-	24	4-6	3-4	2-2	0-3-3	3	1	0	0	0	13

## 2009-10 Game-by-Game (junior)

Game	GS	Min	FGs	3FGs	FTs	O-D-R	Pf	A	To	BL	ST	Pts
ARK.-PINE BLUFF			did not play (INJURED)									
COPPIN STATE			did not play (INJURED)									
TEXAS SOUTHERN			did not play (INJURED)									
vs. Gonzaga			did not play (INJURED)									
vs. Arizona			did not play (INJURED)									
at Chaminade	-	7	1-3	0-0	2-2	0-0-0	0	0	0	0	0	4
SAN FRANCISCO	-	4	0-2	0-0	2-3	2-1-3	1	0	0	0	0	2
at Oregon State			did not play									
COLO. CHRISTIAN	-	22	3-5	1-3	4-4	0-3-3	2	1	1	0	1	11
at Colorado State	-	11	0-1	0-0	2-4	0-1-1	0	0	0	0	2	2
CSU NORTHRIDGE	-	8	1-2	0-1	0-0	0-2-2	0	0	1	0	0	0
YALE			did not play									
at Tulsa	-	2	0-1	0-1	0-0	0-0-0	0	0	0	0	0	0
MIAMI (OH)	-	6	0-1	0-1	2-2	0-1-1	0	0	0	0	0	2
at Texas	-	8	0-0	0-0	0-0	0-0-0	0	0	0	0	0	0
BAYLOR			did not play									
KANSAS STATE	-	12	0-2	0-1	1-2	0-1-1	2	1	0	0	1	1
at Oklahoma State	-	5	1-1	1-1	0-0	0-0-0	1	0	0	0	0	3
at Texas A&M	-	7	0-2	0-2	0-0	0-0-0	2	0	0	0	0	0
NEBRASKA	-	23	3-4	2-3	0-0	0-3-3	1	2	0	0	0	8
at Iowa State	-	24	0-4	0-2	2-2	2-4-6	3	3	0	0	2	2
KANSAS	-	34	5-8	3-4	0-1	0-4-4	4	1	0	0	1	13
MISSOURI	-	14	0-3	0-1	1-2	0-1-1	2	0	2	0	1	1
at Kansas State	-	16	1-3	0-1	0-0	0-0-0	1	1	2	0	0	2
OKLAHOMA	-	9	1-1	0-0	0-0	0-2-2	0	1	0	0	0	2
at Kansas	-	10	2-3	2-2	0-0	0-0-0	0	1	0	0	1	6
at Missouri	-	15	0-2	0-1	0-0	0-5-5	0	1	0	0	0	0
IOWA STATE	-	3	0-0	0-0	0-0	0-0-0	0	0	0	0	0	0
at Nebraska	-	20	1-3	1-2	2-2	0-0-0	1	2	1	0	1	5
TEXAS TECH	-	17	2-4	0-1	7-8	0-3-3	1	0	0	1	0	11
vs. Texas Tech	-	15	2-4	0-1	0-0	2-0-2	2	1	2	0	2	4

## 2008-09 Game-by-Game (sophomore)

Game	GS	Min	FGs	3FGs	FTs	O-D-R	Pf	A	To	BL	ST	Pts
ARK.-PINE BLUFF	-	11	1-5	1-5	0-0	0-1-1	0	1	0	0	0	3
MONTANA STATE	-	22	4-8	0-2	4-4	0-1-1	2	1	0	0	1	12
HARVARD	-	21	2-6	1-3	1-1	0-1-1	2	1	0	0	0	6
LAFAYETTE	-	13	0-1	0-1	0-0	0-2-2	2	3	1	0	0	0
at Stanford	-	8	0-1	0-1	0-0	0-1-1	0	1	0	0	1	0
TCU	-	21	2-5	0-1	0-0	0-1-1	0	0	2	0	0	4
COLORADO STATE	-	3	0-0	0-0	0-0	0-0-0	0	1	1	0	0	0
PRAIRIE VIEW A&M	-	14	4-5	1-2	0-1	1-2-3	0	0	1	0	0	9
La.-MONROE	-	24	3-10	1-5	0-0	0-2-2	1	2	2	0	1	7
vs. Coppin State	-	15	3-4	1-2	2-2	0-2-2	1	1	2	0	0	9
vs. Buffalo	-	7	0-0	0-0	0-0	0-0-0	1	1	2	0	0	0
vs. Vermont	-	20	0-2	0-2	0-0	0-2-2	2	1	1	0	0	0
at SMU	-	10	0-2	0-0	0-0	0-0-0	2	1	0	0	0	0
WESTERN STATE	-	9	0-4	0-1	0-0	0-2-2	1	0	0	0	0	0
at Missouri	-	14	0-2	0-0	1-2	0-1-1	0	0	1	0	1	1
KANSAS			did not play									
at Texas Tech	-	18	0-4	0-2	2-2	1-1-2	3	1	2	0	2	2
KANSAS STATE	-	7	0-2	0-1	0-0	0-0-0	0	1	1	0	0	0
IOWA STATE	-	10	3-3	0-0	0-0	0-1-1	0	0	0	0	1	6
at Kansas	-	15	1-3	0-1	0-0	1-2-3	3	0	0	0	0	2
NEBRASKA	-	18	2-4	0-2	0-0	0-6-6	4	3	0	0	1	4
at Oklahoma	-	8	0-2	0-1	0-0	0-0-0	2	2	0	0	0	0
at Iowa State	-	15	1-1	0-0	1-2	0-0-0	0	0	1	0	0	3
TEXAS	-	15	2-4	0-2	1-1	0-0-0	3	1	2	0	0	5
at Nebraska	-	15	0-0	0-0	0-0	0-2-2	0	0	0	0	0	0
MISSOURI	-	20	1-2	0-0	0-0	0-0-0	1	1	1	0	0	2
OKLAHOMA STATE	-	32	8-13	3-5	0-0	0-2-2	0	4	1	0	2	19
at Baylor	-	33	3-7	1-2	0-0	1-2-3	2	2	3	0	0	7
TEXAS A&M	-	24	1-5	1-4	0-0	0-5-5	1	1	1	0	1	3
at Kansas State	-	15	0-2	0-1	0-0	0-1-1	0	0	1	0	0	0
vs. Texas	-	19	3-5	1-2	4-4	3-3-6	1	1	0	0	0	11

## 2007-08 Game-by-Game (freshman)

Game	GS	Min	FGs	3FGs	FTs	O-D-R	Pf	A	To	BL	ST	Pts
NEW MEXICO	-	19	3-5	1-3	2-4	0-0-0	0	0	0	0	0	9
vs. Florida A&M	-	21	3-5	1-2	3-4	0-3-3	1	2	0	0	1	10
vs. Savannah State	-	26	3-5	3-4	3-3	0-2-2	2	1	1	1	0	12
at Wisconsin	-	20	1-3	0-1	0-0	0-1-1	1	2	1	0	0	2
COLO. CHRISTIAN	*	33	4-7	1-4	0-0	0-3-3	0	4	2	0	0	9
at Denver	-	16	1-4	0-2	0-0	0-1-1	0	0	1	0	1	2
at Air Force	-	20	2-2	2-2	0-0	0-0-0	3	0	1	0	1	6
STANFORD	-	22	1-2	1-2	0-1	0-2-2	3	0	0	0	0	3
at Wyoming	-	29	4-10	3-8	0-0	1-2-3	1	3	1	0	0	11
NEW ORLEANS	-	7	0-0	0-0	0-0	0-1-1	0	1	2	0	0	0
at Colorado State	-	5	0-0	0-0	0-0	0-0-0	0	0	2	0	0	0
GRAMBLING STATE	-	14	2-3	0-1	0-0	0-1-1	1	1	2	0	0	4
SMU	-	23	4-6	2-4	0-0	0-4-4	0	2	1	0	0	10
TULSA	-	23	2-5	2-4	4-4	0-1-1	2	2	1	0	0	10
at Texas A&M	-	12	0-1	0-0	0-0	0-0-0	1	0	0	0	0	0
NEBRASKA	-	15	2-5	2-5	2-2	0-2-2	0	2	1	0	0	8
at Texas	-	14	1-3	0-1	2-2	1-0-1	0	1	0	0	0	4
KANSAS STATE	-	21	0-4	0-3	0-0	0-2-2	2	2	0	0	0	0
MISSOURI	-	3	0-1	0-1	0-0	0-0-0	0	0	2	0	0	0
at Iowa State	-	18	0-5	0-3	0-0	0-2-2	0	1	0	0	0	0
KANSAS	-	14	0-6	0-5	0-0	0-0-0	0	1	0	0	0	0
at Oklahoma State	-	2	0-0	0-0	0-0	0-0-0	0	0	0	0	0	0
OKLAHOMA	-	12	3-4	2-3	0-0	0-0-0	0	0	1	0	0	8
at Kansas	-	17	3-4	2-2	0-0	0-1-1	0	1	0	0	0	8
TEXAS TECH	-	16	1-3	0-2	0-0	0-0-0	0	1	0	0	0	2
at Missouri	-	16	3-5	2-3	0-0	1-2-3	2	3	1	0	0	8
BAYLOR	-	36	4-7	1-4	2-2	0-2-2	3	1	1	0	1	11
IOWA STATE	-	26	0-1	0-1	1-2	0-3-3	1	1	1	0	0	1
at Kansas State	-	27	2-5	2-5	1-2	0-2-2	2	1	0	0	0	7
at Nebraska	-	36	0-3	0-3	2-2	0-0-0	3	3	1	0	0	2
vs. Baylor	-	12	0-1	0-0	0-0	0-3-3	1	1	1	0	0	0
vs. Oklahoma	-	9	0-3	0-3	0-0	0-0-0	2	1	0	0	1	0



# AUSTIN DUFAULT

# #33

Junior • Forward • 6-9 • 225 • Killdeer, N.D.

PTS	REB	AST	ST	BLK	MIN	FG%	FT%	3-PT%
9.0	5.1	0.6	1.1	0.4	22.8	.547	.707	.300

- Season-best 18 points, seven FGs made vs. Maryland Eastern Shore, also led team in scoring for the first time this season (third career)
- Last 10 games: 9.5 ppg., 5.0 rpg., 38-of-60 from field (63.3 percent)

- Seven games with 10 or more points
- 11 games with at least four or more rebounds
- Started all 15 games

- Reached the 500-point plateau for career (561)
- 12 games this season shooting over 50 percent
- Starter 72 of 77 games over three year career

## 2009-10 (Sophomore Year)

PTS	REB	AST	ST	MIN	FG%	FT%	3-PT%
5.5	3.1	0.9	0.7	21.5	.453	.593	.381

- six games with four or more FGs made
- 50% + in 15 of 31 games
- first career double-double (14 pts., 11 reb.) Arizona (Nov. 24, 2009)
- Career: 18 games w/ 10+ points; 6 games this season 10+ points

## 2008-09 (Freshman Year)

PTS	REB	AST	ST	MIN	FG%	FT%	3-PT%
8.2	3.7	1.0	0.4	30.7	.425	.671	.235

- started all 31 games
- scored 254 points ranking then-11th of all incoming freshman
- one of three to start every game
- fifth in Big 12 Conference freshman scoring

## 2009-10 Totals

Points .....	14, Arizona (11/24)
FG Made .....	5, twice
FG Attempts .....	9, three times
FT Attempts .....	7, Arizona (11/24)
3-Pt. Made .....	3, at Texas A&M (1/23)
Rebounds .....	11, Arizona (11/24)
Assists .....	3, at Missouri (2/24)
Steals .....	3, twice
Blocks .....	3, San Francisco (12/1)
Minutes .....	33, at Texas A&M (1/23)

## Personal Bests

### Points

Season	18	MD-Eastern Shore (Dec. 29, 2010)
Big 12	15	Missouri (Feb. 21, 2009)
Career	21	La.-Monroe (Dec. 23, 2008)

### Field Goals

Season	7	MD-Eastern Shore (Dec. 29, 2010)
Big 12	5	twice
Career	9	La.-Monroe (Dec. 23, 2008)

### Field Goals Attempts

Season	9	four times
Big 12	9	five times
Career	14	La.-Monroe (Dec. 23, 2008)

### 3-Pointers Made

Season	1	three times
Big 12	3	at Texas A&M (Jan. 23, 2010)
Career	3	at Texas A&M (Jan. 23, 2010)

### 3-Point Attempts

Season	2	twice
Big 12	5	Kansas (Feb. 3, 2010)
Career	5	Kansas (Feb. 3, 2010)

### Free Throws

Season	6	Alcorn State (Nov. 23, 2010)
Big 12	5	at Oklahoma (Feb. 7, 2009)
Career	6	twice

### Free Throw Attempts

Season	8	Alcorn State (Nov. 23, 2010)
Big 12	6	twice
Career	8	Alcorn State (Nov. 23, 2010)

### Rebounds

Season	9	CSU-Bakersfield (Jan. 2, 2011)
Big 12	7	twice
Career	11	Arizona (Nov. 24, 2009)

### Offensive Rebounds

Season	5	Alcorn State (Nov. 23, 2010)
Big 12	3	twice
Career	5	twice

### Defensive Rebounds

Season	6	CSU-Bakersfield (Jan. 2, 2011)
Big 12	7	at Iowa State (Feb. 11, 2009)
Career	7	at Iowa State (Feb. 11, 2009)

### Assists

Season	3	Longwood (Dec. 19, 2010)
Big 12	3	at Missouri (Feb. 24, 2010)
Career	5	Pra. View A&M (Dec. 19, 2008)

### Steals

Season	2	six times
Big 12	2	twice
Career	3	twice

### Blocks

Season	3	Colorado State (Dec. 8, 2010)
Big 12	1	four times
Career	3	twice

### Minutes

Season	31	Colorado State (Dec. 8, 2010)
Big 12	42	Texas (Feb. 14, 2009)
Career	42	Texas (Feb. 14, 2009)

## 2010-11 Game-by-Game (junior)

Game	GS	Min	FGs	3FGs	FTs	O-D-R	Pf	A	To	BL	ST	Pts
<b>IDAHO STATE</b>	*	16	3-5	1-2	2-4	0-3-3	0	1	0	0	2	9
at Georgia	*	30	5-9	0-0	3-4	3-2-5	4	0	0	1	2	13
at San Francisco	*	25	0-3	0-2	1-2	2-5-7	4	0	1	0	2	1
<b>ALCORN STATE</b>	*	21	2-9	0-1	6-8	5-3-8	1	1	1	1	1	10
at Harvard	*	19	2-4	0-0	3-4	2-1-3	4	0	0	0	1	7
<b>TX-PAN AMERICAN</b>	*	16	3-6	0-0	0-0	2-0-2	3	1	1	0	2	6
<b>OREGON STATE</b>	*	23	5-7	0-1	2-2	2-3-5	1	1	0	1	0	12
<b>COLORADO STATE</b>	*	31	4-7	0-0	0-0	2-2-4	3	0	0	3	0	8
<b>THE CITADEL</b>	*	25	2-2	0-0	4-5	1-5-6	1	0	0	0	2	8
<b>LONGWOOD</b>	*	18	4-7	1-1	3-4	3-2-5	2	3	1	0	0	12
vs. New Mexico	*	20	1-1	0-0	0-0	0-1-1	4	0	0	0	1	2
vs. Indiana	*	27	5-8	0-1	0-0	3-4-7	4	0	0	0	2	10
<b>MD EASTERN SHORE</b>	*	21	7-9	1-1	3-3	3-4-7	3	0	0	0	0	18
at Cal St. Bakersfield	*	27	4-9	0-1	2-5	3-6-9	3	2	1	0	1	10
<b>WESTERN N.MEXICO</b>	*	16	3-4	0-0	3-6	2-2-4	5	1	2	1	1	9

## 2009-10 Game-by-Game (sophomore)

Game	GS	Min	FGs	3FGs	FTs	O-D-R	Pf	A	To	BL	ST	Pts
ARK.-PINE BLUFF	*	25	3-4	1-2	3-4	1-2-3	4	1	3	0	1	10
COPPIN STATE	*	26	1-6	0-0	4-4	2-3-5	1	2	2	1	0	6
TEXAS SOUTHERN	*	31	2-5	0-0	3-4	2-1-3	2	2	1	0	2	7
vs. Gonzaga	*	26	3-4	1-1	0-2	0-2-2	2	1	0	0	0	7
vs. Arizona	*	29	4-7	1-3	5-7	5-6-11	5	1	0	0	1	14
at Chaminade	*	27	5-6	2-2	0-0	1-3-4	2	2	0	0	3	12
SAN FRANCISCO	*	23	2-3	0-1	1-2	0-5-5	2	1	1	3	1	5
at Oregon State	*	12	3-5	0-0	1-1	2-2-4	4	0	0	0	0	7
COLO. CHRISTIAN	*	23	2-6	0-1	2-5	2-3-5	3	1	0	0	2	6
at Colorado State	*	25	2-4	0-2	0-0	1-1-2	5	1	0	1	0	4
CSU NORTHBRIDGE	*	23	4-7	2-3	2-2	0-3-3	2	1	1	1	3	12
YALE	*	29	1-5	0-2	1-2	0-1-1	4	2	1	1	0	3
at Tulsa	*	31	4-7	0-2	0-1	0-4-4	3	1	0	0	0	8
MIAMI (OH)	*	25	0-2	0-0	2-2	0-1-1	2	1	2	1	0	2
at Texas	-	9	0-2	0-0	1-2	0-0-0	5	1	2	0	0	1
BAYLOR	-	11	0-0	0-0	0-0	0-0-0	1	0	1	0	0	0
KANSAS STATE	-	22	1-3	0-0	3-5	2-1-3	5	0	0	0	1	5
at Oklahoma State	*	19	4-6	2-4	0-0	1-4-5	3	0	1	0	1	10
at Texas A&M	*	33	5-9	3-4	0-0	1-2-3	1	1	0	0	1	13
NEBRASKA	*	17	1-3	0-1	1-2	0-1-1	5	0	0	0	1	3
at Iowa State	*	31	3-6	2-3	0-0	1-6-7	4	1	0	0	2	8
KANSAS	*	27	2-9	1-5	1-4	2-4-6	4	2	1	0	1	6
MISSOURI	*	18	0-3	0-0	0-0	1-1-2	0	1	0	1	1	0
at Kansas State	*	20	1-4	0-1	1-4	1-2-3	4	1	1	0	0	3
OKLAHOMA	*	15	2-3	0-0	1-1	0-0-0	2	0	0	1	0	5
at Kansas	*	20	3-9	1-3	0-0	1-2-3	2	0	1	0	1	7
at Missouri	*	16	0-1	0-1	0-0	1-2-3	4	3	0	0	0	0
IOWA STATE	*	19	2-4	0-1	0-0	0-3-3	2	0	1	0	0	4
at Nebraska	*	7	0-0	0-0	0-0	0-0-0	3	0	0	0	0	0
TEXAS TECH	-	12	2-2	0-0	0-0	1-1-2	4	0	0	1	0	4
vs. Texas Tech	-	15	0-2	0-0	0-0	0-1-1	2	0	0	0	0	0

## 2008-09 Game-by-Game (freshman)

Game	GS	Min	FGs	3FGs	FTs	O-D-R	Pf	A	To	BL	ST	Pts
ARK.-PINE BLUFF	*	31	5-11	0-2	3-4	1-3-4	2	2	2	1	0	13
MONTANA STATE	*	37	5-10	1-3	0-0	1-2-3	4	2	2	0	2	11
HARVARD	*	25	2-5	1-3	6-6	2-4-6	1	1	2	0	0	11
LAFAYETTE	*	25	3-5	1-1	4-5	2-0-2	3	1	2	0	0	11
at Stanford	*	34	5-12	0-4	0-0	1-4-5	4	0	1	0	0	10
TCU	*	28	3-9	1-4	1-3	0-0-0	3	0	6	0	1	8
COLORADO STATE	*	32	5-10	1-2	1-3	1-4-5	4	1	1	0	1	12
PRAIRIE VIEW A&M	*	27	1-6	0-2	1-2	1-1-2	2	5	4	0	0	3
La.-MONROE	*	38	9-14	1-2	2-2	0-2-2	0	3	1	0	0	21
vs. Coppin State	*	33	2-9	0-0	2-2	3-1-4	3	0	0	0	0	6
vs. Buffalo	*	33	2-5	0-2	2-2	0-4-4	0	0	2	1	0	6
vs. Vermont	*	28	2-10	1-2	1-2	0-3-3	2	0	0	0	0	6
at SMU	*	39	5-9	1-3	2-2	1-6-7	1	1	2	0	0	13
WESTERN STATE	*	32	1-5	0-1	2-2	2-3-5	1	0	0	0	0	4
at Missouri	*	31	2-6	1-1	0-0	1-4-5	1	0	3	0	1	5
KANSAS	*	30	4-9	0-2	2-4	3-2-5	4	1	1	0	0	10
at Texas Tech	*	30	2-7	0-1	0-1	0-3-3	4	1	5	0	1	4
KANSAS STATE	*	37	4-6	0-1	1-2	1-3-4	1	1	2	0	1	9
IOWA STATE	*	31	2-5	1-2	2-4	0-5-5	1	1	0	0	2	7
at Kansas	*	28	2-5	1-3	2-2	1-3-4	1	0	1	0	1	7
NEBRASKA	*	32	3-8	0-2	0-1	0-4-4	1	1	1	1	0	6
at Oklahoma	*	28	4-8	0-2	5-6	1-2-3	1	2	1	0	0	13
at Iowa State	*	32	3-7	0-1	4-4	0-7-7	3	0	0	0	1	10
TEXAS	*	42	3-6	0-0	2-2	0-5-5	4	1	2	0	1	8
at Nebraska	*	32	2-5	1-2	4-6	1-2-3	3	0	1	0	0	9
MISSOURI	*	38	5-9	1-2	4-5	3-2-5	1	1	2	0	0	15
OKLAHOMA STATE	*	24	1-6	0-2	0-4	0-2-2	5	2	2	0	0	2
at Baylor	*	17	2-3	0-0	1-2	0-1-1	5	2	2	0	0	5
TEXAS A&M	*	23	1-4	0-0	0-2	0-1-1	2	0	1	0	0	2
at Kansas State	*	38	2-3	0-0	1-2	0-6-6	4	2	3	0	0	5
vs. Texas	*	18	1-2	0-1	0-0	0-0-0	4	0	0	0	0	2



## Ben Mills

7-0, 215, Fr., C

Hartland, Wis. (Arrowhead HS)

## #32

### 2010-11

PTS	REB	AST	ST	BLK	MIN	FG%	FT%
2.0	1.3	0.0	0.0	0.0	4.8	.423	.500

- 12 games played
- Season-high six points (3-of-4 FG) vs. The Citadel
- 6-for-11 from field in his last three games (54.6 percent)
- Five points against Longwood
- Also played nine minutes against the Broncs
- Played eight minutes with two points vs. Alcorn State

- Scored first collegiate point at San Francisco

### Arrowhead HS

- Averaged 17.1 points, 11.2 rebounds, 1.4 blocks per game.
- Senior year led Arrowhead to a 25-3 record and the WIAA Division 1 state championship.
- First-team all-state honors from both the Associated Press and Wisconsin Basketball Coaches Association.
- At the state championships, averaged 20 points and 10 rebounds per game earning an all-tournament first team selection.
- Wisconsin Mr. Basketball finalist • Lettered all four years.
- Team captain junior & senior years.
- Helped team achieve a 56-16 record (.778) over three years. • Set 2009 Wisconsin Basketball Yearbook Shootout rebounding record with 18 in a single game • Three-time Classic 8 All-Conference team.
- As a junior, averaged 13 pts., 11 rebs., four blocks per game.
- Open Option major in Colorado's College of Arts and Sciences.

### 2010-11 Game-by-Game

Game	GS	Min	FGs	FTs	O-D-R	Pf	A	To	BL	ST	Pts
IDAHO STATE	-	2	0-0	0-0	0-0-0	0	0	1	0	0	0
at Georgia	did not play										
at San Francisco	-	4	0-0	1-2	0-0-0	0	0	0	0	0	1
ALCORN STATE	-	8	1-4	0-0	1-2-3	0	0	0	0	0	2
at Harvard	-	1	0-0	0-0	0-0-0	0	0	0	0	0	0
TX-PAN AMERICAN	-	9	2-4	0-0	0-0-0	0	0	0	0	0	4
OREGON STATE	-	3	1-2	0-0	0-0-0	0	0	0	0	0	2
COLORADO STATE	did not play										
THE CITADEL	-	6	3-4	0-0	0-0-0	3	0	1	0	0	6
LONGWOOD	-	5	2-5	1-2	2-2-4	0	0	1	0	0	5
vs. New Mexico	-	2	0-0	0-0	0-0-0	0	0	0	0	0	0
vs. Indiana	did not play										
MD EASTERN SHORE	-	4	0-2	0-0	1-1-2	0	0	1	0	0	0
at Cal St. Bakersfield	-	4	1-2	0-0	2-1-3	0	0	0	0	0	2
WESTERN N.MEXICO	-	8	1-3	0-0	2-1-3	0	0	1	0	0	2

### Personal Bests

#### Points

Season	6	The Citadel (Dec. 17, 2010)
Big 12	-	
Career	6	The Citadel (Dec. 17, 2010)

#### Field Goals

Season	3	The Citadel (Dec. 17, 2010)
Big 12	-	
Career	3	The Citadel (Dec. 17, 2010)

#### Field Goal Attempts

Season	5	Longwood (Dec. 19, 2010)
Big 12	-	
Career	5	Longwood (Dec. 19, 2010)

#### Free Throws

Season	1	twice
Big 12	-	
Career	1	twice

#### Free Throw Attempts

Season	2	twice
Big 12	-	
Career	2	twice

#### Rebounds

Season	4	Longwood (Dec. 19, 2010)
Big 12	-	
Career	4	Longwood (Dec. 19, 2010)

#### Offensive Rebounds

Season	2	three times
Big 12	-	
Career	2	three times

#### Defensive Rebounds

Season	2	twice
Big 12	-	
Career	2	twice

#### Assists

Season	-	
Big 12	-	
Career	-	

#### Steals

Season	-	
Big 12	-	
Career	-	

#### Blocks

Season	-	
Big 12	-	
Career	-	

#### Minutes

Season	9	TX-Pan American (Nov. 30, 2010)
Big 12	-	
Career	9	TX-Pan American (Nov. 30, 2010)



# TREY ECKLOFF #55

Junior • Forward • 6-10 • 235  
Englewood, Colo.

## 2010-11 Totals (Junior Year)

PTS	REB	AST	ST	MIN	FG%	FT%	3-PT%
2.3	1.3	0.5	0.2	5.8	.478	.667	.143

- Played 11 games; season-best 11 minutes vs. Longwood
- Six points vs. Western New Mexico
- Season opener vs. Idaho State with two points, three rebounds

## 2009-10 Totals (Sophomore Year)

PTS	REB	AST	ST	MIN	FG%	FT%	3-PT%
0.9	0.8	0.2	-	5.7	.250	1.000	.125

- 15 games played in 2009-10
- five games with 10+ minutes played
- started first collegiate game at K-State (12 mins., 1 reb.)
- Academic All-Big 12 First Team and Big 12 Commissioners Honor Roll

## 2008-09 Totals (Freshman Year)

PTS	REB	AST	ST	MIN	FG%	FT%	3-PT%
2.2	1.8	0.3	0.3	3.6	.350	.412	.350

- Played 26 games averaging 10.1 minutes a game
- Season-high 25 minutes vs. Kansas (Jan. 17) w/ 6 rebs.
- Fall 2008, Spring 2009 4.0 GPA Club; Dean's List

### Personal Bests

Points	Rebounds
Season 6 W. New Mexico (Jan. 5)	Season 4 W. New Mexico (Jan. 5)
Big 12 7 at Oklahoma (Feb. 7, 2009)	Big 12 6 Kansas (Jan. 17, 2009)
Career 7 at Oklahoma (Feb. 7, 2009)	Career 6 Kansas (Jan. 17, 2009)

Field Goals	Offensive Rebounds
Season 3 W. New Mexico (Jan. 5)	Season 2 Idaho St. (Nov. 12, 2010)
Big 12 3 at Oklahoma (Feb. 7, 2009)	Big 12 3 Kansas (Jan. 17, 2009)
Career 3 at Oklahoma (Feb. 7, 2009)	Career 6 Kansas (Jan. 17, 2009)

Field Goals Attempts	Defensive Rebounds
Season 6 Longwood (Dec. 19, 2010)	Season 3 W. New Mexico (Jan. 5)
Big 12 5 Kansas (Jan. 17, 2009)	Big 12 4 at Missouri (Jan. 14, 2009)
Career 6 Longwood (Dec. 19, 2010)	Career 4 at Missouri (Jan. 14, 2009)

3-Pointers Made	Assists
Season 1 MD Eastern Shore (Dec. 29)	Season 2 Longwood (Dec. 19, 2010)
Big 12 1 four times	Big 12 2 Kansas (Jan. 17, 2009)
Career 1 nine times	Career 2 three times

3-Point Attempts	Steals
Season 2 three times	Season 1 twice
Big 12 2 five times	Big 12 1 three times
Career 2 eight times	Career 2 at Stanford (Nov. 29, 2008)

Free Throws	Blocks
Season 1 twice	Season 1 Alcorn St. (Nov. 23, 2010)
Big 12 2 five times	Big 12 1 four times
Career 2 six times	Career 1 seven times

Free Throw Attempts	Minutes
Season 2 Alcorn State (Nov. 23, 2010)	Season 13 W. New Mexico (Jan. 5)
Big 12 2 four times	Big 12 25 Kansas (Jan. 17, 2009)
Career 2 eight times	Career 25 Kansas (Jan. 17, 2009)

### 2010-11 Game-by-Game (junior)

Game	GS	Min	FGs	3FGs	FTs	O-D-R	Pf	A	To	BL	ST	Pts
IDAHO STATE	-	2	1-1	0-0	0-0	2-1-3	0	0	0	0	0	2
at Georgia	-	4	1-1	0-0	0-0	0-0-0	2	0	0	0	0	2
at San Francisco	did not play											
ALCORN STATE	-	6	1-2	0-1	1-2	0-2-2	3	0	0	1	0	3
at Harvard	-	2	0-0	0-0	0-0	0-0-0	1	0	0	0	0	0
TX-PAN AMERICAN	-	7	1-1	0-0	0-0	0-2-2	1	1	0	0	1	2
OREGON STATE	-	5	1-1	0-0	0-0	0-0-0	2	0	0	0	0	2
COLORADO STATE	did not play											
THE CITADEL	-	4	0-1	0-1	0-0	0-0-0	0	1	0	0	1	0
LONGWOOD	-	11	1-6	0-2	1-1	1-1-2	1	2	0	0	0	3
vs. New Mexico	did not play											
vs. Indiana	-	4	0-0	0-0	0-0	0-0-0	0	0	0	0	0	0
MD EASTERN SHORE	-	6	2-3	1-2	0-0	1-0-1	2	0	0	0	0	5
at Cal State Bakersfield	did not play											
WESTERN N.MEXICO	-	6	3-7	0-1	0-0	1-3-4	0	1	0	0	0	6

### 2009-10 Game-by-Game (sophomore)

Game	GS	Min	FGs	3FGs	FTs	O-D-R	Pf	A	To	BL	ST	Pts
ARK.-PINE BLUFF	-	1	0-0	0-0	0-0	0-0-0	0	0	0	0	0	0
COPPIN STATE	-	7	1-3	0-1	0-0	2-2-4	1	0	1	0	0	2
SAN FRANCISCO	-	4	1-2	0-1	0-0	0-0-0	0	0	0	0	0	2
COLO. CHRISTIAN	-	6	0-1	0-0	0-0	1-1-2	0	0	1	0	0	0
CSU NORTHBRIDGE	-	5	1-1	0-0	0-0	1-1-2	2	1	0	0	0	2
at Tulsa	-	1	0-2	0-1	0-0	0-0-0	0	0	0	0	0	0
at Texas	-	10	1-1	0-0	0-0	0-0-0	5	0	2	1	0	2
BAYLOR	-	10	0-1	0-0	0-0	0-0-0	3	1	0	0	0	0
KANSAS STATE	-	10	0-1	0-0	0-0	0-0-0	5	1	1	1	0	0
at Oklahoma State	-	1	0-1	0-1	0-0	0-0-0	0	0	1	0	0	0
KANSAS	-	3	1-2	1-2	0-0	0-0-0	0	0	0	0	0	3
MISSOURI	-	10	0-2	0-1	2-2	0-3-3	1	0	0	0	0	2
at Kansas State	-	12	0-0	0-0	0-0	1-0-1	1	0	3	0	0	0
OKLAHOMA	-	3	0-1	0-0	0-0	0-0-0	0	0	0	0	0	0
at Missouri	-	2	0-2	0-1	0-0	0-0-0	0	0	0	1	0	0

### 2008-09 Game-by-Game (freshman)

Game	GS	Min	FGs	3FGs	FTs	O-D-R	Pf	A	To	BL	ST	Pts
ARK.-PINE BLUFF	-	14	1-3	0-0	2-2	0-2-2	3	0	1	0	0	4
MONTANA STATE	-	9	1-3	1-2	1-2	0-2-2	1	0	0	0	0	4
LAFAYETTE	-	15	2-2	1-1	1-2	0-3-3	3	1	3	1	1	6
at Stanford	-	23	1-3	0-1	0-1	2-2-4	3	1	2	0	2	2
TCU	-	9	1-3	0-0	0-0	2-0-2	2	0	2	1	0	2
COLORADO STATE	-	14	0-1	0-0	0-0	0-3-3	0	0	0	0	0	0
PRAIRIE VIEW A&M	-	8	1-1	1-1	0-2	0-1-1	1	1	0	0	0	3
La.-MONROE	-	7	0-0	0-0	0-0	1-0-1	0	2	0	0	0	0
vs. Coppin State	-	2	0-2	0-0	0-0	0-0-0	1	0	0	0	0	0
vs. Buffalo	-	5	1-1	0-0	0-0	0-1-1	1	0	0	0	0	2
vs. Vermont	-	12	2-2	1-1	1-1	1-3-4	3	0	0	0	0	6
WESTERN STATE	-	5	1-2	0-1	0-0	1-1-2	0	1	0	0	0	2
at Missouri	-	17	1-3	1-2	0-0	1-4-5	4	1	3	0	0	3
KANSAS	-	25	1-5	1-2	0-2	3-3-6	3	2	4	1	1	3
at Texas Tech	-	6	2-2	0-0	0-2	0-2-2	3	0	0	0	0	4
KANSAS STATE	-	3	0-0	0-0	0-0	0-0-0	2	0	1	0	0	3
IOWA STATE	-	9	0-3	0-2	0-0	1-2-3	1	0	2	0	1	0
at Kansas	-	16	0-1	0-1	0-0	1-3-4	2	0	0	0	0	0
NEBRASKA	-	6	1-1	0-0	0-0	0-0-0	1	0	1	0	0	2
at Oklahoma	-	15	3-4	1-2	0-0	0-0-0	3	0	1	0	1	7
at Iowa State	-	12	0-3	0-2	0-0	0-1-1	1	0	0	0	0	0
TEXAS	-	8	1-4	0-1	2-2	1-0-1	2	0	2	0	0	4
at Nebraska	-	3	0-0	0-0	0-0	0-0-0	0	0	0	0	0	0
MISSOURI	-	10	1-1	0-0	0-1	0-0-0	2	0	0	0	0	2
at Baylor	-	6	0-1	0-1	0-0	0-0-0	0	0	1	0	0	0
vs. Texas	-	4	0-0	0-0	0-0	0-0-0	1	0	1	0	0	0



**Game #4 (Nov. 23)  
Alcorn State at Colorado**

**ALCORN STATE (0-4)**

Player	FGs	3-pt	FT	O-D-	R	F	TP	A	TO	B	S	Min	
Davenport	f	3-7	0-0	2-4	1-3	4	2	8	0	2	0	20	
Francis	f	0-3	0-0	1-2	1-2	3	1	1	0	3	1	14	
Starks	f	2-3	0-0	1-2	1-5	6	2	5	0	0	2	24	
McDonald	g	0-5	0-1	1-2	0-1	1	0	1	2	1	0	18	
Baker	g	5-18	3-11	0-0	1-1	2	1	13	1	3	0	24	
Searcy	g	0-5	0-0	3-4	0-0	0	2	3	3	1	0	22	
Savannah	g	2-5	0-0	0-0	0-0	0	0	4	0	1	0	14	
Ingram	g	0-4	0-2	0-0	0-3	3	3	0	0	1	0	23	
Sanders	g	3-4	0-0	1-2	2-1	3	1	7	1	0	0	10	
Brownlee	g	1-2	0-0	0-0	0-2	2	1	2	0	1	0	8	
Eackles	g	0-1	0-0	2-4	0-0	1	2	0	1	0	0	9	
Martin	g	1-3	0-0	1-1	4-0	4	3	3	1	0	1	15	
Ragland	g	1-4	0-2	0-0	0-2	2	1	2	0	1	1	9	
Team													
Totals		18-64	3-16	12-21	13-23	36	18	51	8	15	5	9	200
FG%	1st Hlf	9-28	32.1%	2nd Hlf	9-36	25.0%	Game	18-64	28.1%				
3FG%	1st Hlf	3-11	27.3%	2nd Hlf	0-5	00.0%	Game	3-16	18.8%				
FT%	1st Hlf	6-12	50.0%	2nd Hlf	6-9	66.7%	Game	12-21	57.1%				
deadball rebounds:		5											

**COLORADO (2-2)**

Player	FGs	3-pt	FT	O-D-	R	F	TP	A	TO	B	S	Min	
Dufault	f	2-9	0-1	6-8	5-3	8	1	10	1	1	1	21	
Tomlinson	g	3-4	2-3	0-0	0-1	1	2	8	4	1	0	27	
Sharpe	g	1-1	0-0	2-2	0-2	2	2	4	3	0	0	17	
Relphorde	g	4-7	2-3	5-5	1-5	6	0	15	1	3	0	23	
Knutson	g	3-11	1-5	0-0	0-4	4	2	7	3	0	0	26	
Burks	g	8-13	2-3	4-5	2-4	6	0	22	2	0	1	19	
Higgins	g	7-11	0-0	2-2	0-6	6	2	16	1	1	0	23	
Coney	g	0-0	0-0	0-1	0-0	0	2	0	0	1	0	9	
Roberson	g	2-5	0-1	0-0	3-6	9	4	4	2	2	2	21	
Mills	g	1-4	0-0	0-0	1-2	3	0	2	0	0	0	8	
Eckloff	g	1-2	0-1	1-2	0-2	2	3	0	0	1	0	6	
Team													
Totals		32-67	7-17	20-25	13-37	50	18	91	19	9	5	11	200
FG%	1st Hlf	16-32	50.0%	2nd Hlf	16-35	45.7%	Game	32-67	47.8%				
3FG%	1st Hlf	3-7	42.9%	2nd Hlf	4-10	40.0%	Game	7-17	41.2%				
FT%	1st Hlf	14-16	87.5%	2nd Hlf	6-9	66.7%	Game	20-25	80.0%				
deadball rebounds:		4											

Alcorn State 27 24 51  
Colorado 49 42 91  
Officials: David Hall, Hal Lusk, Terry Moore  
Technical: none. Attendance: 2778. Fouled out: none.

**BOULDER** - Alec Burks was fresh off a career-high, 29-point performance, Cory Higgins was set to make his 98th consecutive start at Colorado.

Tad Boyle is as much a numbers guy as any basketball coach, but he's more focused on the big picture. And from his first CU team, this is what he was seeing: Uninspired defense, critical breakdowns and weak board work that were costing the Buffaloes.

The message to his players in the wake of their painful overtime loss at San Francisco was simple and direct: The five who play the best defense reap the rewards. Burks and Higgins, the team's two top scorers, weren't among that fivesome - and they didn't start Tuesday night in CU's 91-51 blowout of Alcorn State at the Coors Events Center.

"Coach said the best defensive players were going to play . . . he stuck to his word and I respect that," Burks said.

Boyle called the starting lineup "irrelevant." Of more relevance, though, is "where this program's identity needs to come from - defend and rebound. . . I said it when I took the job and you'll get sick of hearing me say it."

Making Burks and Higgins short-term spectators, said Boyle, wasn't as much a punishment for them as a reward for the players whose defensive play against USF graded out higher. So Boyle started Shannon Sharpe, Nate Tomlinson, Levi Knutson, Austin Dufault and Marcus Relphorde - with Burks and Higgins watching.

"I don't look at it like they didn't start, I look at it like the other guys did," said Boyle, who admitted he was "an emotional coach" after the loss at USF and that he had to "stick to his guns" in starting the five best defenders.

Higgins, who had started every game of his CU career, said his streak was an accomplishment he was "proud of - but it's always team first. I'm not going to sit here and say it didn't bother me, but it's over now."

Boyle was aware of the streak and said he had spoken to Higgins about it: "Cory is a team guy, a guy concerned about the program. I was aware of it, it wasn't something I took lightly. I was proud of the way he handled it. I want this season to be special for our seniors."

Their brief absences at the beginning of each half didn't matter that much. The Buffs breezed past the Braves, leading by as many as 43 points in the final 1:02 and evening their record at 2-2 while dealing the visitors their fourth consecutive loss.

**Game #5 (Nov. 28)  
Colorado at Harvard**

**COLORADO (2-3)**

Player	FGs	3-pt	FT	O-D-	R	F	TP	A	TO	B	S	Min	
Relphorde	f	4-9	1-2	3-6	2-2	4	3	12	0	2	0	25	
Dufault	f	2-4	0-0	3-4	2-1	3	4	7	0	0	0	19	
Tomlinson	g	0-1	0-0	0-0	0-4	4	2	0	2	0	0	31	
Burks	g	5-12	0-1	10-10	1-4	5	4	20	1	3	0	30	
Higgins	g	6-14	1-3	8-8	2-1	3	3	21	1	5	0	1	36
Sharpe	g	1-3	0-0	0-0	2-0	2	1	2	0	2	0	14	
Roberson	g	1-2	0-1	1-2	2-2	4	2	3	0	1	0	2	19
Knutson	g	0-4	0-3	1-2	1-1	2	1	1	1	2	0	23	
Mills	g	0-0	0-0	0-0	0-0	0	0	0	0	0	0	0	1
Eckloff	g	0-0	0-0	0-0	0-0	0	1	0	0	0	0	2	
Team													
Totals		19-49	2-9	26-32	13-15	28	21	66	5	15	0	7	200
FG%	1st Hlf	10-29	34.5%	2nd Hlf	9-20	45.0%	Game	19-49	38.8%				
3FG%	1st Hlf	0-5	00.0%	2nd Hlf	0-4	50.0%	Game	2-9	22.2%				
FT%	1st Hlf	8-10	80.0%	2nd Hlf	18-22	81.8%	Game	26-32	81.3%				
deadball rebounds:		3											

**HARVARD (4-1)**

Player	FGs	3-pt	FT	O-D-	R	F	TP	A	TO	B	S	Min	
Georgatos	f	0-1	0-0	0-0	0-0	0	0	0	0	0	0	6	
Wright	f	8-11	0-0	3-4	4-5	9	4	19	6	2	3	32	
Curry	g	2-7	1-4	4-6	0-3	3	2	9	8	4	0	38	
McNally	g	4-5	3-3	6-6	0-4	4	4	17	5	1	0	28	
Webster	g	6-13	3-9	5-5	2-2	4	1	20	1	4	1	38	
Rivard	g	2-6	2-5	1-1	1-2	3	2	7	1	2	0	1	26
Van Nest	g	3-4	1-1	2-2	1-1	3	4	9	1	2	0	17	
Casey	g	0-1	0-1	1-2	1-2	3	5	1	0	1	2	13	
Rouse	g	0-1	0-0	0-0	0-0	0	0	0	0	0	0	1	
Okam	g	0-0	0-0	0-0	0-0	0	1	0	0	0	0	1	
Team													
Totals		25-49	10-23	22-26	11-20	31	23	82	22	16	6	6	200
FG%	1st Hlf	10-24	41.7%	2nd Hlf	15-25	60.0%	Game	25-49	51.0%				
3FG%	1st Hlf	4-12	33.3%	2nd Hlf	6-11	54.5%	Game	10-23	43.5%				
FT%	1st Hlf	13-15	86.7%	2nd Hlf	9-11	81.8%	Game	22-26	84.6%				
deadball rebounds:		2											

Colorado 28 38 66  
Harvard 37 45 82  
Officials: John Hughes, John Gaffney, Robert Riley  
Technical: none. Attendance: 954. Fouled out: Casey.

**CAMBRIDGE, Mass.** - Christian Webster scored 20 points and Keith Wright added 19 and nine rebounds to lead Harvard over Colorado 82-66 on Sunday.

The Crimson (4-1) used sharp shooting from the field (25-for-49, 51 percent) and free-throw line (22-for-26, 84.6 percent) to roll past Colorado.

Cory Higgins scored 21 points and Alec Burks added 20 for the Buffaloes (2-3) in the loss. Burks has now scored 20-plus points in all five games this season. With the loss, the Buffs fall to 0-3 on the road this season.

"I see us as two totally different teams, home and road," said CU coach Tad Boyle following the loss. "I think to be a good road team you have to have pride and you have to have toughness. It's easy to play at home when your fans are cheering for you and things are going well. It doesn't matter where you go on the road, it's not going to be an easy environment to play in, and we're not mentally tough enough yet to do that."

Harvard led 37-28 at halftime, but really turned it on in the second half. The Crimson shot 15-for-25 from the floor (60 percent), including 6-of-11 from 3-point range (54.5 percent) after halftime.

Colorado struggled from the floor, shooting 19-for-49 (38.8 percent) as a team.

Oliver McNally scored 14 of his 17 points in the second half for Harvard as the Crimson extended their lead to 81-60 with 1:39 left to play. McNally shot 4 of 5 from the field and 6 for 6 from the free-throw line for the game.

The loss marks CU's first to Harvard in three meetings (2-1) and the Crimson's first win over a Big 12 opponent.

**Game #6 (Nov. 30)  
Texas-Pan American at Colorado**

**TEXAS-PAN AMERICAN (2-6)**

Player	FGs	3-pt	FT	O-D-	R	F	TP	A	TO	B	S	Min	
Mierzycki	f	0-3	0-0	3-4	1-5	6	3	3	3	4	0	1	27
Provost	f	5-8	5-7	0-0	1-3	4	3	15	1	3	0	28	
Urbanus	g	4-9	4-8	2-2	0-1	1	1	14	1	3	0	27	
Maree	g	3-6	0-0	0-0	0-2	2	1	6	0	2	0	1	26
Petty	g	8-13	2-6	5-5	4-1	5	3	23	3	2	4	30	
Hearn	g	0-3	0-2	0-0	0-0	0	2	0	1	3	0	1	7
Guttridge	g	0-1	0-1	1-2	0-0	0	1	1	0	0	0	1	7
Arkwright	g	1-4	0-2	0-0	0-0	0	1	2	0	0	0	16	
Cabrera	g	0-1	0-0	0-0	1-1	2	2	0	2	0	0	9	
Cleveland	g	0-2	0-0	0-0	2-0	2	0	0	1	1	1	16	
Walker	g	0-0	0-0	0-0	0-0	0	0	0	0	0	0	3	
Team													
Totals		21-50	11-26	11-13	11-13	24	16	64	12	21	3	10	200
FG%	1st Hlf	7-25	28.0%	2nd Hlf	14-25	56.0%	Game	21-50	42.0%				
3FG%	1st Hlf	4-14	28.6%	2nd Hlf	7-12	58.3%	Game	11-26	42.3%				
FT%	1st Hlf	1-2	50.0%	2nd Hlf	10-11	90.9%	Game	11-13	84.6%				
deadball rebounds:		1											

**COLORADO (3-3)**

Player	FGs	
--------	-----	--

## Game #7 (Dec. 4) Oregon State at Colorado

### OREGON STATE (3-4)

Player	FGs	3-pt	FT	O-D-	R	F	TP	A	TO	B	S	Min
Johnson	f	2-6	0-1	0-0	2-6	8	1	4	0	2	0	28
Collier	f	0-1	0-0	0-0	0-0	1	0	0	0	0	0	17
Burton	c	5-8	0-0	0-2	1-1	2	2	10	4	1	1	19
Cunningham	g	5-11	2-6	4-5	0-1	1	4	16	0	7	3	27
Starks	g	0-4	0-2	0-0	0-1	1	1	0	0	0	0	17
McShane	0-0	0-0	0-0	0-0	0	1	0	1	0	0	0	12
Brown	2-6	0-0	1-2	3-1	4	0	5	0	0	0	0	5
Brandt	1-3	1-1	3-4	0-0	0	2	6	0	0	0	1	10
Murphy	0-1	0-1	0-0	0-0	0	1	0	0	0	0	1	8
Moreland	0-0	0-0	0-0	1-0	1	0	0	0	0	1	0	0+
Haynes	1-5	0-2	0-0	2-1	3	0	2	3	3	0	0	25
Deane	0-2	0-0	0-2	2-2	4	1	0	0	4	0	0	8
Wallace	5-7	0-1	4-6	0-1	1	1	14	1	0	0	1	22
Jones	0-0	0-0	0-0	0-0	0	0	0	0	0	0	0	2
Team				3-2	5							
Totals		21-54	3-14	12-21	14-16	30	15	57	9	17	2	9 200

FG%	1st Hlf	7-23	30.4%	2nd Hlf	14-31	45.2%	Game	21-54	38.9%
3FG%	1st Hlf	1-6	16.7%	2nd Hlf	2-8	25.0%	Game	3-14	21.4%
FT%	1st Hlf	3-6	50.0%	2nd Hlf	9-15	60.0%	Game	12-21	57.1%
deadball rebounds:		4							

### COLORADO (4-3)

Player	FGs	3-pt	FT	O-D-	R	F	TP	A	TO	B	S	Min
Dufault	f	5-7	0-1	2-2	2-3	5	1	12	1	0	1	23
Relphorde	g	6-12	0-2	0-0	1-5	6	1	12	8	4	0	31
Burks	g	7-12	1-4	0-0	2-2	3	15	2	3	0	0	27
Higgins	g	2-6	1-4	4-4	0-4	2	9	6	2	1	0	29
Knutson	g	8-10	6-8	0-0	2-2	4	0	22	0	0	0	31
Tomlinson	0-2	0-2	0-0	0-1	2	0	2	2	2	0	0	16
Sharpe	0-1	0-1	0-2	0-1	1	1	0	1	1	0	1	15
Coney	0-0	0-0	0-0	0-0	0	0	0	0	0	0	0	3
Roberson	4-5	0-1	1-1	2-4	6	5	9	0	0	2	2	17
Mills	1-2	0-0	0-1	0-0	0	2	0	0	0	0	0	3
Eckloff	1-1	0-0	0-0	0-0	0	2	2	0	0	0	0	5
Team				2-2	4							
Totals		34-58	8-23	7-9	9-24	33	17	83	20	13	4	6 200

FG%	1st Hlf	14-30	46.7%	2nd Hlf	20-30	71.4%	Game	34-58	58.6%
3FG%	1st Hlf	4-14	25.0%	2nd Hlf	4-7	57.1%	Game	8-23	34.8%
FT%	1st Hlf	5-5	100%	2nd Hlf	2-4	50.0%	Game	7-9	77.8%
deadball rebounds:		1							

Oregon State	18	39	57
Colorado	37	46	83

Officials: James Breeding, Rick Crawford, Lee Cassell  
Technical: none. Attendance: 6363. Fouled out: Roberson.

**BOULDER** - When they play next season, it will be a conference game. Saturday night, it was a glimpse into the future for the Colorado Buffaloes - and for CU Coach Tad Boyle it was a welcome sight.

In their final game of the Big 12/Pac-10 Hardwood Series, CU ripped Oregon State 83-57 at the Coors Events Center, providing a good vibe for Boyle's bunch as it contemplates membership next winter in the Pac-12 Conference.

Staying unbeaten (4-0, 4-3 overall) at the Events Center, the Buffs strung together their most complete 40 minutes of the season against a name opponent. The Beavers (3-4) had won two of their past three games, and Boyle was anxious to see how his team responded against another BCS school.

"I wish I would have known we were going to play this well before the game, I could have saved myself a lot of angst," he said. "I think our guys are starting to buy in. I'm seeing it. In timeouts I'm seeing it... they're recognizing (mistakes). We're not there yet, it's one game; but I sense guys are buying into it if we stop people we have a better chance."

Boyle had plenty of reasons to be pleased. CU had four players in double figures, topped by Knutson's career-high 22 points and followed by Alec Burks (15), Austin Dufault (12) and Marcus Relphorde (12).

"When we're balanced, when we're playing together," said Boyle, "we're pretty hard to guard."

For a second consecutive game, Knutson came out in "can't miss" mode. Against Texas-Pan American on Tuesday night, he came off the bench to score 18 points on 7-of-10 shooting from the field.

On Saturday night, playing as a starter, he hit eight of his 10 field goal attempts, including six-of-eight from beyond the three-point arc. Knutson attributed his recent accuracy to "a lot of things - but experience definitely helps. But I had a great off-season, working in the weight room and with coaches."

He called Saturday night's game "a good test for us, playing against a team from a big conference. We were looking to see where we were. We'd lost some games we thought we should have won... we just came out ready to go."

The Buffs received another strong performance off the bench from freshman Andre Roberson, who scored nine points and snared six rebounds - sharing the team high with Relphorde, who also had a game-high eight assists.

## Game #8 (Dec. 8) Colorado State at Colorado

### COLORADO STATE (4-2)

Player	FGs	3-pt	FT	O-D-	R	F	TP	A	TO	B	S	Min
Franklin	f	7-11	0-0	5-5	1-2	3	4	19	3	0	0	28
McFarland	f	2-7	1-5	0-0	0-0	0	0	5	0	1	0	18
Ogide	f	7-12	0-0	3-5	5-2	7	2	17	0	2	0	25
Ekmeier	g	5-7	2-2	1-2	0-0	0	3	13	1	0	0	31
Green	g	2-5	0-3	2-2	0-1	1	4	6	2	2	0	25
Hornung	1-2	0-0	0-0	2-3	5	3	2	1	0	0	2	26
Carr	4-6	1-3	1-3	1-4	5	2	10	5	2	0	0	26
Nigon	1-3	1-2	0-0	0-2	2	2	3	1	1	0	0	15
Bell	2-4	0-0	2-2	1-2	3	2	6	0	0	0	0	10
Smith, D.	1-1	0-0	0-0	0-3	3	2	2	0	1	0	0	12
Smith, G.	0-0	0-0	0-0	0-2	2	2	0	1	3	0	0	8
Team				0-0								
Totals		32-58	5-15	14-19	10-21	31	26	83	14	15	3	1 225

FG%	1st Hlf	14-22	63.6%	2nd Hlf	16-29	55.2%	OT	2-7	32-58	55.2%
3FG%	1st Hlf	3-8	37.5%	2nd Hlf	2-5	40.0%	OT	0-2	5-15	33.3%
FT%	1st Hlf	2-4	50.0%	2nd Hlf	9-11	81.8%	OT	3-4	14-19	73.7%
deadball rebounds:		1								

### COLORADO (5-3)

Player	FGs	3-pt	FT	O-D-	R	F	TP	A	TO	B	S	Min	
Dufault	f	4-7	0-0	0-0	2-2	4	3	8	0	0	3	0	31
Tomlinson	g	3-5	1-3	1-2	1-2	3	3	8	3	1	0	1	36
Relphorde	g	5-9	1-1	7-8	1-3	4	4	18	3	1	9	33	
Burks	g	8-16	0-0	9-10	2-3	5	4	25	1	2	0	36	
Higgins	g	2-10	0-2	11-14	0-4	3	15	3	1	0	1	38	
Sharpe	0-0	0-0	0-0	0-1	1	1	0	1	0	0	0	11	
Roberson	1-3	0-0	0-0	3-2	5	2	0	2	2	1	0	12	
Knutson	3-4	1-1	7-7	0-3	3	1	14	1	0	0	0	28	
Team				0-0									
Totals		26-54	3-7	35-41	9-20	29	21	90	12	7	4	4 225	

FG%	1st Hlf	10-29	34.5%	2nd Hlf	13-20	65.0%	OT	3-5	26-54	48.1%
3FG%	1st Hlf	1-4	25.0%	2nd Hlf	2-3	66.7%	OT	0-0	3-7	42.9%
FT%	1st Hlf	9-10	90.0%	2nd Hlf	18-23	78.3%	OT	8-8	35-41	85.4%
deadball rebounds:		4								

Colorado State	33	43	7	83
Colorado	30	46	14	90

Officials: Paul Janssen, Don Daily, Kipp Kissinger  
Technical: none. Attendance: 7219. Fouled out: none.

**BOULDER** - In non-hoops lingo, what happened Wednesday night at the Coors Events Center closely resembled the making of sausage - an often unsightly, grind-it-out process that could have wound up being unpalatable for the Colorado Buffaloes.

They worked overtime to get the final product right, but it was worth it. The Buffs and their first-year coach, Tad Boyle, left their home court with a 90-83 OT win over their in-state rivals, the Colorado State Rams.

It was a savory end to a long night.

"I don't know where to start," Boyle said afterwards, "but we beat a really good team tonight. I've got all the respect in the world for Coach (Tim) Miles, the job he's done and the team we just beat out there."

Boyle called the contest "a grind-it-out type game. We talked about it at halftime. (CSU) was trying to grind it out on us... We've got opportunities to play a lot of different styles. Obviously, we want to get up and down, and we'll play an 80-point game. There may be times when we have to play games in the 50s or 60s."

But the bottom line for the Buffs, said Boyle, is this: "The resiliency, the pride and the toughness are starting to develop."

CU found all three in the final minute of overtime, getting four consecutive free throws by Levi Knutson and a pair by Marcus Relphorde, who added a "take that" dunk at the buzzer.

Just as important, the Buffs also got a crucial block by Austin Dufault on a layup attempt by the Rams' 6-foot-9, 245-pound Andy Ogide that led to Knutson's last two free throws. Boyle called the block "key... it was huge."

Both coaches believed their teams should have won the game - which featured 14 lead changes and 10 ties - in regulation play. But Boyle's case might have been a little stronger than Miles'. In the final 2:00 of regulation, CU's Alec Burks and Cory Higgins missed four of eight free throw attempts, with the normally dependable Higgins going three-for-six.

"I wouldn't change it," Boyle said. "I'd take Cory at the line every day. I've got confidence in all the guys from the free throw line. We're a good free throw shooting team."

When they got a reprieve in the extra period, they proved it, avenging a 77-62 loss to CSU last season in Fort Collins and defeating the Rams for the 15th time in 16 games at the Events Center.

The Buffs (5-3) again were the beneficiary of balanced scoring: four players reached double figures, topped by Burks' 25. Behind him were Relphorde with 18, Higgins with 15 and Knutson with 14.

## Game #9 (Dec. 17) The Citadel at Colorado

### THE CITADEL (3-6)

Player	FGs	3-pt	FT	O-D-	R	F	TP	A	TO	B	S	Min
Streeter	f	2-6	0-0	1-1	2-4	6	1	5	0	1	1	1
Dahn	f	4-12	2-8	0-0	2-1	3	2	10	2	2	0	27
Groselle	c	9-12	0-0	4-5	1-2	3	2	22	1	4	0	28
Urbanau	f	1-4	1-4	0-0	0-0	0	0	3	2	3	0	20
Wells	g	4-11	0-1	3-4	0-5	5	2	11	5	3	0	31
Morabbi	1-5	0-1	0-0	0-0	3	0	2	3	0	0	0	20
Wright	1-2	0-0	0-0	0-0	0	0	2	1	0	0	1	8
Dejworek	0-0	0-0	0-1	0-3	3	2	0	0	0	0	0	12
Smith	0-0	0-0	0-0	0-0	0	0	0	0	0	0	0	1
Eykyn	1-3	0-0	2-2	0-3	3	2	4	0	0	0	0	12
Clark	1-3	0-0	0-0	2-1	3	2	2	0	0	0	0	15
Team				0-1								
Totals		24-58	3-14	10-13	7-22	29	13	61	14	13	1	3 200

FG%	1st Hlf	12-32	37.5%	2nd Hlf	12-26	46.2%	Game	24-58	41.4%
3FG%	1st Hlf	2-10	20.0%	2nd Hlf					

**Game #10 (Dec. 19)**  
**Longwood at Colorado**

**LONGWOOD (3-10)**

Player	FGs	3-pt	FT	O-D-	R	F	TP	A	TO	B	S	Min
Carter c	8-13	0-1	0-0	0-3	3	5	16	0	2	1	0	21
Bowman g	5-7	1-2	4-6	2-4	6	2	15	3	2	0	1	34
Washington g	2-5	1-4	0-0	1-1	2	3	5	4	3	0	0	23
Mitchell g	2-6	0-0	2-4	2-3	5	4	6	3	3	0	1	27
Van der Kooij g	1-5	0-2	1-2	2-2	4	2	3	1	0	0	0	20
Gee II	1-1	0-0	2-2	0-0	0	0	4	0	0	0	0	7
Robinson	1-7	1-5	0-0	1-0	1	0	3	1	0	0	0	20
Parker	2-8	1-4	0-0	1-1	1	0	5	1	0	1	0	13
Dublin	0-3	0-0	0-0	2-2	4	2	0	1	1	0	0	20
Havenstein	1-5	0-0	0-0	1-3	4	1	2	0	1	1	0	15
Team	0-0											
Totals	23-60	4-18	9-14	11-19	30	19	59	14	13	3	2	200

FG%	1st Hlf	12-26	46.2%	2nd Hlf	11-34	32.4%	Game	23-60	38.3%
3FG%	1st Hlf	2-7	28.6%	2nd Hlf	2-11	18.2%	Game	4-18	22.2%
FT%	1st Hlf	0-0	0.0%	2nd Hlf	9-14	64.3%	Game	9-14	64.3%

**COLORADO (7-3)**

Player	FGs	3-pt	FT	O-D-	R	F	TP	A	TO	B	S	Min
Dufault f	4-7	1-1	3-4	3-2	5	2	12	3	1	0	0	18
Tomlinson g	0-1	0-1	0-0	0-2	2	3	0	3	1	0	0	17
Relphorde g	5-6	1-1	3-5	2-1	3	1	14	1	2	0	0	25
Burks g	6-13	1-2	2-2	3-4	7	2	15	5	1	1	1	27
Higgins g	7-12	2-2	2-2	1-1	2	1	8	2	1	0	2	24
Sharpe	1-4	0-1	0-0	2-1	3	2	5	0	2	0	0	23
Coney	2-4	0-1	0-0	0-0	0	0	4	0	0	0	0	8
Roberson	5-9	2-3	2-3	4-9	13	1	14	0	1	1	0	21
Knutson	2-5	0-0	1-2	2-2	4	0	5	0	1	0	0	7
Eckloff	1-6	0-2	1-1	2-1	2	1	3	2	0	0	0	11
Team	1-2			3								
Totals	38-72	10-17	18-23	19-29	48	13	104	23	8	4	5	200

FG%	1st Hlf	17-34	50.0%	2nd Hlf	21-38	55.3%	Game	38-72	52.8%
3FG%	1st Hlf	6-8	75.0%	2nd Hlf	4-9	44.4%	Game	10-17	58.8%
FT%	1st Hlf	7-10	70.0%	2nd Hlf	11-13	84.6%	Game	18-23	78.3%

Longwood	26	33	59
Colorado	47	57	104

Officials: Shawn Lehigh, Mike Giarratano, Glen Mayberry  
Technical: none. Attendance: 2556. Fouled out: Carter.

**BOULDER - Time to take it on the road . . . to Vegas, baby.**

After a pair of sound victories against overmatched opponents to close out an impressive five-game home stand, the Colorado men's basketball team departs Tuesday for a two-night stand in the 10th Annual Las Vegas Classic.

If the Buffaloes can tap into the confidence gained from five consecutive victories - the program's longest win streak since 2005-06 (nine straight) - they stand a good chance of ending this season's road woes. All three of CU's losses have come away from the Coors Events Center.

Draw what you will from comparative scores, but two days after New Mexico steamrolled Longwood 91-54 in Albuquerque, CU flattened the visitors from Virginia, 104-59, at the Coors Events Center.

Balanced scoring and unselfish play again proved to be CU's dual recipe for success against the Lancers, who were on an seven-game losing streak and entered Sunday's contest allowing 87 points a game.

Six Buffs reached double figures, topped by Cory Higgins' 18 - 15 of his points after intermission. Levi Knutson added 17, Burks 15, Marcus Relphorde and Andre Roberson had 14 each and Austin Dufault 12. Roberson snared 13 rebounds, giving him a double-double in back-to-back games.

The last time CU had six players in double figures was Jan. 3, 2007 against Central Florida. Four Buffs hit double figures against The Citadel, and for the second consecutive game CU had 23 assists.

The matinee rout kept the Buffs unbeaten (7-0) this season at home and was their 19th consecutive home win against non-conference opposition - a streak that stretches to 2008-09.

The Lancers (3-10) kept it close for, oh, about 5 minutes, leading by a basket on their first three possessions but falling behind 8-6 on a tip-in by Burks. Ahead 16-12 about 13 minutes before halftime, the Buffs pulled away with a 16-0 run and went up 32-12 on a pair of Knutson free throws at the 8:07 mark.

Thereafter, CU increased its lead to as many as 24 points before intermission as Higgins converted a three-point play to send the Buffs up 47-23. Once again, Boyle used all 11 of his players, with 10 of them scoring (point guard Nate Tomlinson missed his only shot).

CU hit six of its eight first-half three-point attempts and shot 50 percent (17-of-34) from the field. For the game, the Buffs hit 38 of their 72 (52.8 percent) field goal attempts - both season highs - and matched the 10 treys they made against The Citadel. CU outrebounded Longwood 48-30 and outscored the visitor's bench 45-14.

**Game #11 (Dec. 22)**  
**Colorado vs. New Mexico**

**COLORADO (7-4)**

Player	FGs	3-pt	FT	O-D-	R	F	TP	A	TO	B	S	Min
Dufault f	1-1	0-0	0-0	0-1	1	4	2	0	0	0	0	10
Tomlinson g	1-4	0-3	0-0	0-2	2	5	2	3	1	0	0	15
Relphorde g	4-10	1-5	4-7	1-1	2	4	13	3	3	0	0	28
Burks g	7-14	0-2	11-13	0-1	1	1	25	1	2	0	1	35
Higgins g	4-13	0-4	2-2	1-2	3	4	10	0	2	1	0	33
Sharpe	3-3	1-1	0-0	0-0	0	7	2	0	0	0	0	11
Roberson	3-5	1-3	0-0	4-4	8	3	7	0	3	1	2	26
Knutson	4-8	2-4	0-0	1-1	2	4	10	0	1	0	2	30
Mills	0-0	0-0	0-0	0-0	0	0	0	0	0	0	0	2
Team	4-0			4								
Totals	27-58	5-22	17-22	11-12	23	25	76	9	12	2	6	200

FG%	1st Hlf	11-27	40.7%	2nd Hlf	16-31	51.6%	Game	27-58	46.6%
3FG%	1st Hlf	3-10	30.0%	2nd Hlf	2-12	16.7%	Game	5-22	22.7%
FT%	1st Hlf	8-10	80.0%	2nd Hlf	9-12	75.0%	Game	17-22	77.3%

**NEW MEXICO (10-1)**

Player	FGs	3-pt	FT	O-D-	R	F	TP	A	TO	B	S	Min
Kirk c	2-4	1-1	1-2	2-8	10	1	6	0	1	0	0	22
Hardeman f	3-4	0-0	3-3	1-2	3	4	9	0	3	0	0	16
Gary g	4-7	0-0	10-10	1-2	3	2	18	4	2	0	2	33
Williams g	5-7	1-3	7-8	0-3	3	3	18	11	3	0	3	30
McDonald g	6-10	2-5	0-0	1-1	2	2	14	2	2	0	0	30
Adams	1-1	0-0	0-0	0-0	0	2	2	0	0	0	1	8
Fenton	2-3	0-1	1-3	0-1	1	0	5	2	1	0	0	15
Snell	3-5	1-2	0-0	0-0	1	7	0	1	0	0	0	15
Gordon	4-8	0-0	2-2	1-6	7	4	10	0	5	0	0	20
Bairstow	0-0	0-0	0-0	0-2	2	2	0	0	0	0	0	11
Team	3-1			4								
Totals	30-49	5-12	24-28	9-26	35	21	89	19	18	0	6	200

FG%	1st Hlf	15-23	65.2%	2nd Hlf	15-26	57.7%	Game	30-49	61.2%
3FG%	1st Hlf	5-10	50.0%	2nd Hlf	0-2	00.0%	Game	5-12	41.7%
FT%	1st Hlf	6-7	85.7%	2nd Hlf	18-21	85.7%	Game	24-28	85.7%

Colorado	33	43	76
New Mexico	41	48	89

Officials: T. Nestor, W. Humes, L. Andrakakos  
Technical: none. Attendance: 2867. Fouled out: Tomlinson.

LAS VEGAS - Colorado fought until the end, but could never get over the hump as New Mexico led the entire game in defeating the Buffs 89-76 in the semifinals of the Las Vegas Classic at the Orleans Arena.

The Buffs (7-4) got off to a slow start as New Mexico (10-1) jumped out to an 18-6 lead in the first six minutes of the game by making three of their first four three-point attempts. CU was stuck playing catch-up the rest of the way.

"We let them in for easy baskets and we weren't getting back," said CU head coach Tad Boyle on New Mexico's early run. "They were running and dunking and getting to the rim whenever they wanted. We put some pressure on our offense by giving them easy baskets."

The second half went back-and-forth as the Buffs could never get closer than six points but didn't trail by more than 12 until the final minute. UNM never scored more than four consecutive points after halftime.

CU last closed the deficit to six on two Marcus Relphorde free throws to make the score 59-53 with 9:25 remaining in the game. A pair of A.J. Hardeman layups put the Lobos ahead 63-53 with 8:33 left. Cory Higgins hit a jump shot, but after a Kendall Williams layup gave UNM another ten-point lead, Relphorde was called for a charge with 7:47 remaining and momentum shifted to the Lobos. Drew Gordon hit a layup for the Lobos and they took their first 12-point lead of the second half.

Trailing late in the game, CU had to resort to sending New Mexico to the free throw line, and the Lobos responded. UNM's last 14 points came from going 14-of-14 from the charity stripe. Dairese Gary and Williams each hit six free throws apiece over this stretch in the final 2:18.

Burks led the Buffs with a game-high 25 points (7-of-14 from the field, 11-of-13 from the free throw line). Relphorde added 13, Cory Higgins and Levi Knutson each scored 10 points apiece. Andre Roberson pulled down eight rebounds for the Buffs and is now averaging 7.6 per game for the season. He has led the team in rebounding eight times this season and coming into today ranked second among Big 12 freshmen in rebounds per game.

The Buffs shot 46.6 percent (27-of-58) from the field.

Gary and Williams led New Mexico with 18 points each, and Williams recorded a double-double by distributing 11 assists. Phillip McDonald added 14 and Alex Kirk pulled down ten rebounds.

The Lobos shot 61.2 percent (30-of-49) from the field for the game.

Burks led all scorers with 14 first-half points. McDonald led the Lobos with 10 points at the break and New Mexico shot 65.2 percent (15-of-23) from the field in the half.

**Game #12 (Dec. 23)**  
**Colorado vs. Indiana**

**COLORADO (8-4)**

Player	FGs	3-pt	FT	O-D-	R	F	TP	A	TO	B	S	Min
Dufault f	5-8	0-1	0-0	3-4	7	4	10	0	0	0	2	27
Tomlinson g	1-3	1-3	2-4	0-4	4	3	5	5	5	0	0	34
Relphorde g	6-8	0-0	2-2	2-1	3	4	14	1	3	0	0	26
Burks g	2-3	0-0	5-7	1-2	3	5	9	2	3	0	0	18
Higgins g	6-14	1-3	9-9	1-3	4	2	22	1	1	0	4	37
Sharpe	0-1	0-1	0-0	0-0	0	0	0	0	0	0	0	9
Coney	0-0	0-0	0-0	0-0	0	0	0	0	0	0	1	3
Roberson	2-3	1-1	3-3	0-0	1	5	8	0	1	0	2	14
Knutson	2-4	0-1	6-6	0-5	5	0	10	1	1	0	0	28
Eckloff	0-0	0-0	0-0	0-0	0	0	0	0	0	0	0	4
Team	4-0			4								
Totals	24-44	3-10	27-31	8-22	30	23	78	10	15	0	9	200

FG%	1st Hlf	13-27	48.1%	2nd Hlf	11-17	64.7%	Game	24-44	54.5%
3FG%	1st Hlf	1-5	20.0%	2nd Hlf	2-5	40.0%	Game	3-10	30.0%
FT%	1st Hlf	12-12	100%	2nd Hlf	15-19	78.9%	Game	27-31	87.1%

**INDIANA (9-4)**

Player	FGs	3-pt	FT	O-D-	R	F	TP	A	TO	B	S	Min
Hulls g	5-9	3-7	4-4	1-2	3	3	17	1	2	0	1	31
Watford f	3-14	0-0	8-11	3-1	4	2	14	1	3	1	1	34
Creek g	1-4	0-1	1-2	0-0	0	4	3	0	1	0	0	19
Jones III g	4-15	0-3	0-2	2-1	3	1	8	4	3	1	2	31
Elston f	1-2	0-0	0-0	0-3	3	0	2	0	0	0	1	13
Oladipo												

**Game #13 (Dec. 29)**  
**Maryland Eastern Shore at Colorado**

**MARYLAND EASTERN SHORE (3-9)**

Player	FGs	3-pt	FT	O-D-	R	F	TP	A	TO	B	S	Min
Hines	f 3-5	0-0	2-2	2-5	7	4	6	0	1	0	0	21
White	f 5-10	0-0	2-2	0-0	0	3	12	3	0	0	2	21
Burns	g 2-10	1-3	2-2	0-0	0	2	7	2	2	0	1	30
Bradshaw	g 5-10	1-6	0-3	0-3	3	2	11	1	3	0	0	34
Haley	g 7-12	2-5	2-2	3-1	4	2	18	0	1	0	1	23
Obama Obama	0-0	0-0	0-0	2-2	4	4	0	0	0	1	0	17
Swift	0-2	0-0	3-4	1-1	2	0	3	1	1	0	0	17
Bell	2-6	1-4	0-0	0-0	0	4	5	0	0	0	0	13
Bright	0-1	0-1	0-0	0-1	1	1	0	0	0	0	0	5
Spence	0-0	0-0	0-0	0-1	1	2	0	0	0	0	0	2
Robertson	1-4	1-2	0-0	0-1	1	3	0	1	0	0	0	16
Tucker	0-0	0-0	0-0	0-0	0	0	0	0	0	0	0	1
Team	2-0 2											
Totals	25-60	6-21	9-15	10-15	25	65	7	10	1	4	4	200
FG%	1st Hlf 12-27	44.4%	2nd Hlf 13-33	39.4%	Game 24-44	41.7%						
3FG%	1st Hlf 4-9	44.4%	2nd Hlf 2-12	16.7%	Game 3-10	28.6%						
FT %	1st Hlf 5-8	62.5%	2nd Hlf 4-7	57.1%	Game 9-15	60.0%						
deadball rebounds:	3											

**COLORADO (9-4)**

Player	FGs	3-pt	FT	O-D-	R	F	TP	A	TO	B	S	Min
Dufault	f 7-9	1-1	3-3	3-4	7	3	18	0	0	0	0	21
Tomlinson	g 1-1	1-1	0-0	0-3	3	2	3	6	2	1	0	19
Relphorde	g 7-9	0-0	1-4	0-3	3	1	15	3	2	0	0	23
Burks	g 5-10	0-0	5-5	2-3	5	1	15	2	1	0	0	27
Higgins	g 5-8	0-2	5-5	0-1	1	1	15	2	0	0	0	28
Sharpe	3-4	0-1	3-3	0-2	1	9	3	2	1	1	21	
Coney	0-1	0-0	2-2	0-1	1	1	2	0	0	0	0	6
Roberson	2-5	0-1	0-2	2-6	8	2	4	1	0	3	2	20
Knutson	2-5	2-4	0-1	1-1	1	6	2	1	0	0	2	25
Mills	0-2	0-0	0-0	1-0	2	0	0	1	0	0	0	4
Eckloff	2-3	1-2	0-0	1-0	1	2	5	0	0	0	0	6
Team	2-3 5											
Totals	34-57	5-12	19-25	12-27	39	15	92	19	9	5	5	200
FG%	1st Hlf 18-25	72.0%	2nd Hlf 16-32	50.0%	Game 34-57	59.6%						
3FG%	1st Hlf 3-6	50.0%	2nd Hlf 2-6	33.3%	Game 5-12	41.7%						
FT %	1st Hlf 7-9	77.8%	2nd Hlf 12-16	75.0%	Game 19-25	76.0%						
deadball rebounds:	3											
MD Eastern Shore	33	32	65									
Colorado	46	46	92									

Officials: Terry Davis, Brent Hampton, Greg Renneberger  
 Technicals: none. Attendance: 3896. Fouled out: none.

**BOULDER** - Colorado mostly went through the motions Wednesday night in dispatching outmanned Maryland Eastern Shore 92-65 at the Coors Events Center.

If there is an upside, this is it: Even in going through the motions against an inferior opponent, the motions might be getting better - a promising sign with Big 12 Conference play only 10 days away.

But first-year CU Coach Tad Boyle had trouble seeing it that way. He shouldered the blame for a lackluster start that seeped through most of the opening half until the Buffs got their heads, ah, back into their assignments.

"It was not our best effort, but I'd rather learn from a win than a loss," Boyle said. "I was not real pleased with our effort, especially in the first half."

Boyle pointed to a college hoops philosophy that maintains in a 30-game season, "There's probably five games where you play below your capability and stink it up, there's probably five games where you play above your heads, and the other 20 games probably are what you really are (as a team)."

Wednesday's night offering, in Boyles' eyes, was firmly positioned among that funky five. "I don't necessarily feel like we got better as a basketball program," he said, "but we will tomorrow."

Perhaps in spite of themselves, the Buffs won their 20th consecutive non-conference home game, a streak that includes eight straight this season. They reached their seasonal scoring average (83.6, eighth nationally) and once again achieved it through balance. Four CU players hit double figures - Austin Dufault with 18 and Cory Higgins, Marcus Relphorde and Alec Burks with 15 each.

The Buffs gave up three three-pointers to open the game, underscoring Boyle's on-going pleas for better on-ball defense, and quickly fell behind 11-7. They took their first lead on a three-pointer by Levi Knutson that was set up by three crisp passes on the perimeter, the last going from point guard Nate Tomlinson (six assists) to Knutson on the left wing.

His trey sent CU ahead 14-13 with 14:50 remaining in the half, and Boyle admitted that unselfish ball movement offered an occasional bright spot for the Buffs.

"We moved the ball at times; we had 19 assists," he said. "Individually there were some great efforts . . . there were some positive things to take from it, but some things to learn as well."

**Game #14 (Jan. 2)**  
**Colorado at Cal State Bakersfield**

**COLORADO (10-4)**

Player	FGs	3-pt	FT	O-D-	R	F	TP	A	TO	B	S	Min
Dufault	f 4-9	0-1	2-5	3-6	9	3	10	2	1	0	1	27
Relphorde	g 3-7	0-1	5-5	1-3	4	2	11	2	1	0	0	25
Burks	g 7-14	0-2	5-6	4-4	8	4	19	4	2	0	1	30
Tomlinson	g 2-3	2-3	0-0	0-2	2	3	6	0	1	0	3	19
Higgins	g 7-14	0-3	2-2	0-1	1	0	16	3	1	1	1	28
Sharpe	0-1	0-0	4-4	0-1	1	0	4	0	3	0	1	18
Coney	0-0	0-0	0-0	0-0	0	0	0	0	0	0	0	1
Roberson	3-5	0-1	1-2	1-9	10	1	7	0	2	0	2	25
Knutson	4-8	2-5	0-0	0-2	2	3	10	1	0	0	1	23
Mills	1-2	0-0	0-0	2-1	3	0	2	0	0	0	0	4
Team	0-0 0											
Totals	31-63	4-16	19-24	11-29	40	16	85	12	11	1	10	200
FG%	1st Hlf 18-34	52.9%	2nd Hlf 13-29	44.8%	Game 31-63	49.2%						
3FG%	1st Hlf 2-8	25.0%	2nd Hlf 2-8	25.0%	Game 4-16	25.0%						
FT %	1st Hlf 9-9	100%	2nd Hlf 10-15	66.7%	Game 19-24	79.2%						
deadball rebounds:	2											

**CAL STATE BAKERSFIELD (8-6)**

Player	FGs	3-pt	FT	O-D-	R	F	TP	A	TO	B	S	Min
Savage	f 2-8	0-0	0-0	9-7	16	0	4	1	1	0	0	32
Carter	f 4-15	0-2	5-6	2-4	6	2	13	3	3	0	3	31
Brown	c 1-1	0-0	0-0	0-2	2	3	2	0	1	0	1	13
Johnson, A	g 10-21	6-13	0-0	0-4	4	1	26	0	3	0	2	36
Bragg	g 3-8	2-4	7-8	0-2	2	3	15	3	1	0	1	26
Jones	0-0	0-0	1-2	1-2	3	0	1	0	1	0	0	10
Haley	1-2	1-2	0-0	0-1	1	2	3	0	0	0	0	3
Kate	0-0	0-0	0-0	0-0	0	0	0	0	0	0	0	3
Johnson, D	0-4	0-0	2-2	1-1	2	4	2	0	1	0	1	17
Baker	1-4	0-0	3-4	0-0	4	5	2	2	0	1	0	22
Albright	1-2	0-0	0-0	0-0	0	2	1	0	0	0	0	7
Team	1-1 2											
Totals	23-65	9-21	18-22	14-24	38	19	73	10	13	0	9	200
FG%	1st Hlf 13-35	37.1%	2nd Hlf 10-30	33.3%	Game 23-65	35.4%						
3FG%	1st Hlf 6-10	60.0%	2nd Hlf 3-11	27.3%	Game 9-21	42.9%						
FT %	1st Hlf 6-8	75.0%	2nd Hlf 12-14	85.7%	Game 18-22	81.8%						
deadball rebounds:	3											
Colorado	48	38	85									
CSU-Bakersfield	38	35	73									

Officials: Mike Scyphers, Deron White, Milt Stowe  
 Technicals: none. Attendance: 1464. Fouled out: none.

**BAKERSFIELD, Calif.** - Alec Burks scored 19 points to lead four Colorado players in double figures as the Buffaloes defeated Cal State Bakersfield 85-73 Sunday night.

Cory Higgins had 16 points and Marcus Relphorde 11 for Colorado (10-4). Austin Dufault contributed 10 points and nine rebounds for the Buffaloes. Andre Roberson had 10 rebounds, his fourth double-digit rebounding game of his freshman campaign.

The victory marked CU's first road win of the season.

Alex Johnson led all scorers with 26 points for the Roadrunners (8-6). He was 6-of-13 from 3-point range and 10 for 21 overall, but Cal State Bakersfield shot just 35 percent from the field.

Colorado shot 49 percent and improved to 8-0 this season when shooting a higher percentage than their opponent.

Donavan Bragg added 15 points and Stephon Carter 13, while Rashad Savage pulled down 16 rebounds for Cal State Bakersfield, which had won its previous five home games.

It was the first meeting between the schools.

**Game #15 (Jan. 5)**  
**Western New Mexico at Colorado**

**WESTERN NEW MEXICO (5-10)**

Player	FGs	3-pt	FT	O-D-	R	F	TP	A	TO	B	S	Min
Carter	f 7-11	0-0	4-6	4-3	7	3	18	1	3	1	1	30
Kempf	f 3-7	2-4	0-0	0-4	4	5	8	0	0	0	0	27
Riley	g 7-18	1-5	5-5	0-5	5	2	20	2	3	0	3	37
McIntosh	g 1-2	0-0	0-0	0-3	3	3	2	0	2	0	0	22
Crane	g 1-3	1-2	2-2	0-0	0	1	5	1	4	0	0	22
Suarez	0-1	0-0	0-0	0-0	0	1	0	3	1	0	0	10
Murdock	0-3	0-1	2-2	0-0	0	2	2	1	3	0	0	9
Sohlich	3-6	1-4	0-0	0-1	1	1	7	2	1	1	0	14
Luttrell	1-3	1-3	0-0	1-2	3	1	3	0	1	0	0	10
Berry	2-8	0-0	1-2	3-1	4	2	5	0	0	2	0	15
Littleton	0-0	0-0	0-0	0-0	0	0	0	0	0	0	0	4
Team	2-1 3											
Totals	25-62	6-19	14-17	10-20	30	21	70	12	16	4	7	200

FG%	1st Hlf 13-29	44.8%	2nd Hlf 12-33	36.4%	Game 25-62	40.3%						
3FG%	1st Hlf 3-10	30.0%	2nd Hlf 3-9	33.3%	Game 6-19	31.6%						
FT %	1st Hlf 7-7	100%	2nd Hlf 7-10	70.0%	Game 14-17	82.4%						
deadball rebounds:	1											

**COLORADO (11-4)**

Player	FGs	3-pt	FT	O-D-	R	F	TP	A	TO	B	S	Min
Dufault	f 3-4	0-0	3-6	2-2	4	5	9	1	2	1	1	16
Sharpe	g 1-4	0-1	0-0	1-0	1	0	2	1	2	0	1	27
Relphorde	g 4-12	0-3	5-6	5-2	7	2	13	1	1	3	2	28
Burks	g 8-19	0-1	4-4	4-4	8	1	20	2	2	1	1	24
Higgins	g 6-12	0-3	3-4	2-2	4	3	15	4	3	0	0	22
Coney	0-2	0-1	0-0	1-2	3	0	0	0	1	0	0	11
Roberson	6-7	0-1	0-1	3-9	12	2	12	0	0	2	3	27
Knutson	4-6	3-4	2-2	0-3	3	3	13	1	0	0	0	24
Mills	1-3	0-0	0-0	2-1								

**2010-2011 Colorado Men's Basketball**  
**Colorado Combined Team Statistics (as of Jan 05, 2011)**  
**All games**

<b>RECORD:</b>	<b>OVERALL</b>	<b>HOME</b>	<b>AWAY</b>	<b>NEUTRAL</b>
ALL GAMES	11-4	9-0	1-3	1-1
CONFERENCE	0-0	0-0	0-0	0-0
NON-CONFERENCE	11-4	9-0	1-3	1-1

#	Player	gp-gs	min	avg	Total		3-Point		F-Throw		Rebounds				pf	dq	a	to	blk	stl	pts	avg		
					fg-fga	fg%	3fg-fga	3fg%	ft-fa	ft%	off	def	tot	avg										
10	Burks, Alec	15-14	431	28.7	95-191	.497	8-28	.286	88-106	.830	25	45	70	4.7	36	1	35	30	3	14	286	19.1		
11	Higgins, Cory	15-14	456	30.4	81-187	.433	15-49	.306	72-81	.889	15	34	49	3.3	29	1	40	23	6	20	249	16.6		
05	Relphorde, Marcus	15-15	407	27.1	63-130	.485	13-33	.394	43-58	.741	19	44	63	4.2	31	0	36	27	3	12	182	12.1		
24	Knutson, Levi	15-2	355	23.7	60-103	.583	26-52	.500	25-28	.893	11	35	46	3.1	26	0	17	10	0	10	171	11.4		
33	Dufault, Austin	15-15	335	22.3	50-90	.556	3-10	.300	32-47	.681	32	43	75	5.0	42	1	10	7	7	17	135	9.0		
21	Roberson, Andre	15-0	304	20.3	41-71	.577	5-16	.313	13-23	.565	35	80	115	7.7	39	2	11	20	19	26	100	6.7		
01	Tomlinson, Nate	14-12	319	22.8	17-33	.515	12-27	.444	5-8	.625	1	28	29	2.1	39	1	41	21	1	14	51	3.6		
02	Sharpe, Shannon	15-3	260	17.3	13-30	.433	1-8	.125	12-20	.600	9	11	20	1.3	20	0	26	17	7	7	39	2.6		
55	Eckloff, Trey	11-0	64	5.8	11-23	.478	1-7	.143	2-3	.667	5	9	14	1.3	12	0	5	0	1	2	25	2.3		
32	Mills, Ben	12-0	58	4.8	11-26	.423	0-0	.000	2-4	.500	8	7	15	1.3	3	0	0	5	0	0	24	2.0		
14	Coney, Javon	11-0	61	5.5	4-9	.444	0-2	.000	2-3	.667	1	7	8	0.7	5	0	1	2	1	1	10	0.9		
Team											16	18	34											
Total.....		15	3050		446-893	.499	84-232	.362	296-381	.777	177	361	538	35.9	282	6	222	163	48	123	1272	84.8		
Opponents.....		15	3050		373-855	.436	94-259	.363	229-319	.718	173	310	483	32.2	309	-	192	234	39	86	1069	71.3		

<b>TEAM STATISTICS</b>	<b>CU</b>	<b>OPP</b>	<b>Date</b>	<b>Opponent</b>	<b>Score</b>	<b>Att.</b>
SCORING	1272	1069	11/12/10	IDAHO STATE	w 88-80	6874
Points per game	84.8	71.3	11/16/10	at Georgia	L 74-83	6406
Scoring margin	+13.5	-	11/20/10	at San Francisco	Lot 81-83	2747
FIELD GOALS-ATT	446-893	373-855	11/23/10	ALCORN STATE	w 91-51	2778
Field goal pct	.499	.436	11/28/10	at Harvard	L 66-82	954
3 POINT FG-ATT	84-232	94-259	11/30/10	TEXAS-PAN AMERICAN	w 83-64	2641
3-point FG pct	.362	.363	12/04/10	OREGON STATE	w 83-57	6363
3-pt FG made per game	5.6	6.3	12/08/10	COLORADO STATE	Wot 90-83	7219
FREE THROWS-ATT	296-381	229-319	12/17/10	THE CITADEL	w 89-61	4368
Free throw pct	.777	.718	12/19/10	LONGWOOD	w 104-59	2556
F-Throws made per game	19.7	15.3	^ 12/22/10	vs New Mexico	L 76-89	2867
REBOUNDS	538	483	^ 12/23/10	vs Indiana	w 78-69	2375
Rebounds per game	35.9	32.2	12/29/10	MARYLAND EASTERN SHORE	w 92-65	3896
Rebounding margin	+3.7	-	01/02/11	at CSU Bakersfield	w 85-73	1464
ASSISTS	222	192	01/05/11	WESTERN NEW MEXICO	w 92-70	2139
Assists per game	14.8	12.8				
TURNOVERS	163	234	^ = iBN Sports Las Vegas Classic			
Turnovers per game	10.9	15.6	* = Big 12 Conference			
Turnover margin	+4.7	-				
Assist/turnover ratio	1.4	0.8				
STEALS	123	86				
Steals per game	8.2	5.7				
BLOCKS	48	39				
Blocks per game	3.2	2.6				
ATTENDANCE	38834	16813				
Home games-Avg/Game	9-4315	4-2893				
Neutral site-Avg/Game	-	2-2621				

<b>Score by Periods</b>	<b>1st</b>	<b>2nd</b>	<b>OT</b>	<b>Totals</b>
Colorado	584	663	25	1272
Opponents	468	581	20	1069